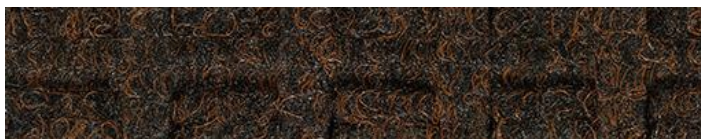




1 2 3

Product:	Water-Horse	Colouration:	Solution Dyed
Category:	Standard Mats	Pile Material:	50 % Polyester (100% Recycled) / 50 % Polypropylene
Sub-Category:	Eco	Pile Weight:	750g/sqm
Typical Applications:	Entrances	Pile Height:	~ 4mm
Total Product Height:	~ 7mm	Backing Material:	100% Nitrile Rubber (15% recycled nitrile rubber)
Total Product Weight:	3.2kg/sqm	Backing Weight:	2.3kg/sqm
Standard Sizes:	60 x 90cm 85 x 120cm 85 x 150cm 115 x 175cm	Backing Height:	1.8mm
Customs Tarriff Number:	56031490	Backing Finish:	Flat
Origin	Made In Europe	Border Width:	20mm
		Border Thickness:	3.6mm
		Dirt Absorption:	1000g/sqm
		Moisture Absorption:	4 - 5l/sqm
		Slip Resistance:	NFSI High-Traction
		Flame Retardancy:	EN 13501-1 / Efl-s1
		Lightfast & Colourfast:	Yes
		Underfloor Heating:	Yes



Brown



Black