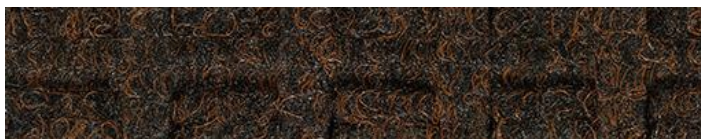


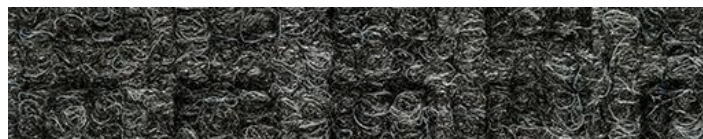


1 2 3

<b>Product:</b>	<b>Water-Horse</b>	<b>Colouration:</b>	Solution Dyed
<b>Category:</b>	Standard Mats	<b>Pile Material:</b>	50 % Polyester (100% Recycled) / 50 % Polypropylene
<b>Sub-Category:</b>	Eco	<b>Pile Weight:</b>	750g/sqm
<b>Typical Applications:</b>	Entrances	<b>Pile Height:</b>	~ 4mm
<b>Total Product Height:</b>	~ 7mm	<b>Backing Material:</b>	100% Nitrile Rubber (15% recycled nitrile rubber)
<b>Total Product Weight:</b>	3.2kg/sqm	<b>Backing Weight:</b>	2.3kg/sqm
<b>Standard Sizes:</b>	60 x 90cm 85 x 120cm 85 x 150cm 115 x 175cm 115 x 240cm	<b>Backing Height:</b>	1.8mm
<b>Customs Tarriff Number:</b>	56031490	<b>Backing Finish:</b>	Flat
<b>Origin</b>	Made In Europe	<b>Border Width:</b>	20mm
		<b>Border Thickness:</b>	3.6mm
		<b>Dirt Absorption:</b>	1000g/sqm
		<b>Moisture Absorption:</b>	4 - 5l/sqm
		<b>Slip Resistance:</b>	NFSI High-Traction
		<b>Flame Retardancy:</b>	EN 13501-1 / Efl-s1
		<b>Lightfast &amp; Colourfast:</b>	Yes
		<b>Underfloor Heating:</b>	Yes



Brown



Black