



Automatic door

Automatic door

Automatic door

Automatic door



Indoor

Iron-Horse XL

More pile for increased dirt and moisture trapping performance

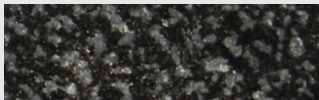




More pile for increased dirt and moisture trapping performance

With a higher pile than the classic Iron-Horse, this mat has an increased ability to trap dirt and moisture, delivering superior performance in areas of heavy traffic.

Why Choose Iron-Horse XL?	Technical Details	Specification		
<ul style="list-style-type: none"> » Extra luxurious professional entrance mat » Superior dirt and moisture absorption » Fully serviceable product » Slip-resistant rubber backing » Light-fast and colour fade resistant » Suitable for underfloor heating » 5 years Manufacturers Guarantee* » Made in Europe 	<p>Materials</p> <ul style="list-style-type: none"> » 100% high-twist nylon polyamide 6 surface » 100% nitrile rubber backing <p>Applications</p> <ul style="list-style-type: none"> » Entrances » Receptions » Corridors » Elevators <p>Certifications</p> <ul style="list-style-type: none"> » EN 13501-1 / CfI-s1 » EN 14041 Antistatic » NFSI High-Traction <p>Absorption:</p> <ul style="list-style-type: none"> » Dirt absorption: 1000 g/m² » Moisture absorption: 4-5 l/m² 	<p>Height</p> <ul style="list-style-type: none"> » Approx. 13-14 mm <p>Standard Sizes</p> <ul style="list-style-type: none"> » 60 x 85 cm » 85 x 120 cm » 85 x 150 cm » 85 x 300 cm » 115 x 175 cm » 150 x 240 cm 	<p>Weight</p> <ul style="list-style-type: none"> » 2.54 kg/m² <p>Widths</p> <ul style="list-style-type: none"> » 85 cm » 115 cm » 150 cm 	<p>Lengths</p> <ul style="list-style-type: none"> » Up to 700 cm



Ebony



Silver Birch



Teak



Willow

Full Technical Data



*2 year guarantee under industrial laundry conditions.

For all mats we reserve the right of production-related tolerance of +/- 3% in size. Colours are subject to commercial tolerance.

For more information, please contact our Customer Service Team:

T: +44 (0)1204 70 50 70

E: info@kleen-tex.co.uk

