



Indoor

**PolyCotton**

Ultra absorbent 50% cotton, 50% polyester washable floor mats

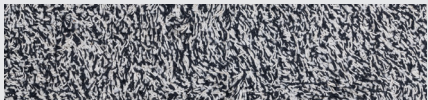


## Ultra absorbent 50% cotton, 50% polyester washable floor mats

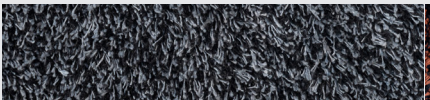
An ideal barrier against moisture. Rich cotton fibres absorb moisture and strong polyester fibres hold and hide the dirt until the mat can be cleaned. Perfect for the busy entrance area and a great solution where dirt is often walked into buildings.

Why Choose PolyCotton?	Technical Details	Specification		
<ul style="list-style-type: none"> <li>» Extremely high water absorbency</li> <li>» Dual fibre pile for improved performance</li> <li>» Fully serviceable product</li> <li>» Slip-resistant rubber backing</li> <li>» Light and colour resistant</li> <li>» Suitable for underfloor heating</li> <li>» 5 years Manufacturers Guarantee*</li> <li>» Made in Europe</li> </ul>	<p><b>Materials</b></p> <ul style="list-style-type: none"> <li>» 50% cotton / 50% polyester</li> <li>» 100 % nitrile rubber backing</li> </ul> <p><b>Applications</b></p> <ul style="list-style-type: none"> <li>» Entrances</li> <li>» Receptions</li> <li>» Corridors</li> <li>» Elevators</li> </ul> <p><b>Certifications</b></p> <ul style="list-style-type: none"> <li>» EN 13501-1 / Ef1-s1</li> </ul> <p><b>Absorption:</b></p> <ul style="list-style-type: none"> <li>» Dirt absorption: 800 g/m<sup>2</sup></li> <li>» Moisture absorption: 4-5 l/m<sup>2</sup></li> </ul>	<p><b>Height</b></p> <ul style="list-style-type: none"> <li>» Approx. 13 mm</li> </ul> <p><b>Standard Sizes</b></p> <ul style="list-style-type: none"> <li>» 60 x 85 cm</li> <li>» 85 x 120 cm</li> <li>» 85 x 150 cm</li> <li>» 85 x 300 cm</li> <li>» 115 x 175 cm</li> <li>» 150 x 240 cm</li> </ul>	<p><b>Weight</b></p> <ul style="list-style-type: none"> <li>» 2.8 kg/m<sup>2</sup></li> </ul> <p><b>Widths</b></p> <ul style="list-style-type: none"> <li>» 85 cm</li> <li>» 115 cm</li> <li>» 150 cm</li> </ul>	<p><b>Lengths</b></p> <ul style="list-style-type: none"> <li>» Up to 700 cm</li> </ul>

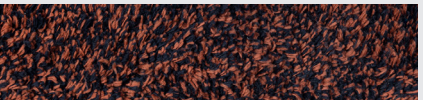
### Full Technical Data



Black White



Black Grey



Black Brown

\*2 year guarantee under industrial laundry conditions.  
For all mats we reserve the right of production-related tolerance of +/- 3% in size. Colours are subject to commercial tolerance.

For more information, please contact our Customer Service Team:

T: +43 53 72 61 3 80

E: info@kleen-tex.eu

