



MAT COLLECTION



Table of contents

Table of contents / About Kleen-TEX	1
Mat placement	2-5

ENTRANCE MATS

Entrance/Mono	8-9
Iron-Horse/Monotone	10-11
XL Decor	12-13
WaterHorse	14-15
Water Horse Windows	16-17
Kleen-Scrape	18-19
Combi Mat	20-21

LOGO & PROMOTIONAL MATS

Logo	24-25
Jet Print	26-27
Ads-Mat	28-29
Kleen-Scrape Poster	30-31

ANTI-FATIGUE MATS

Kleen-Comfort Series	34-35
Kleen-Foam	36-37
Kleen-Thru Plus	38-39
Kleen-Kushion	40-41

HEALTH & SAFETY MATS

Kable-Mat Series	44-45
Kleen-Sanitize Footbath	46-47
Kleen-Sanitize I	48-49
Kleen-Sanitize III	50-51
Water Kooler	52-53
Kleen-Carry	54-55
Production	56-57



These mats have limited washability.



These mats are fully washable and can be washed in a washing machine as needed up to 40 °C or 60 °C. We advise you to wash your washable mats regularly.



Vacuuming, to prevent dirt from accumulating the becoming embedded on the mat floor.



In order to extend the life span of your mat, you should use steam or spray extraction cleaning from time to time.



This type of cleaning is only recommended for pure rubber mats. Please do not treat mats with textile surface with a high-pressure cleaning appliance.



Simple shaking to remove dirt and dust is sufficient for the maintenance of this mat.



In order to maintain cleanliness and functionality, we recommend occasional brushing to keep your mat clean.



These mats can be dried in a tumble dryer.



Please do not tumble dry.



Lay out flat for drying. Please do not tumble dry.



Classification of flammability test ASTM D 2859



Most mats in our product range have a backing made out of 100 % nitrile rubber and not PVC like many lower priced imported products. Toxic gases and vapours may leak from the PVC mats in the case of a fire and that is why we do not recommend the use of PVC backed mats in certain locations within commercial and industrial buildings.



The majority of Kleen-TEX products are suitable for underfloor heating.



High light resistance. These mats will retain their colour even when exposed to strong sunlight for long periods of time.



These mats can be customised to suit individual requirements.



These mats offer photorealistic printing according CMYK



Realise your ideas with our new special shape option. In addition to our extensive product range, we offer the possibility of special shapes for certain products. All of our products with the possibility of a special shape are marked with the special shape symbol.



Antibacterial mats for use in areas where good hygiene is critical.



Products with antimicrobial properties are marked in our brochure with this symbol.



Our rubber backed products have been certified by NFSI (National Floor Safety Institute). NFSI is intended to provide product manufacturers the means to have their products independently evaluated for slip resistance.

Imprint:

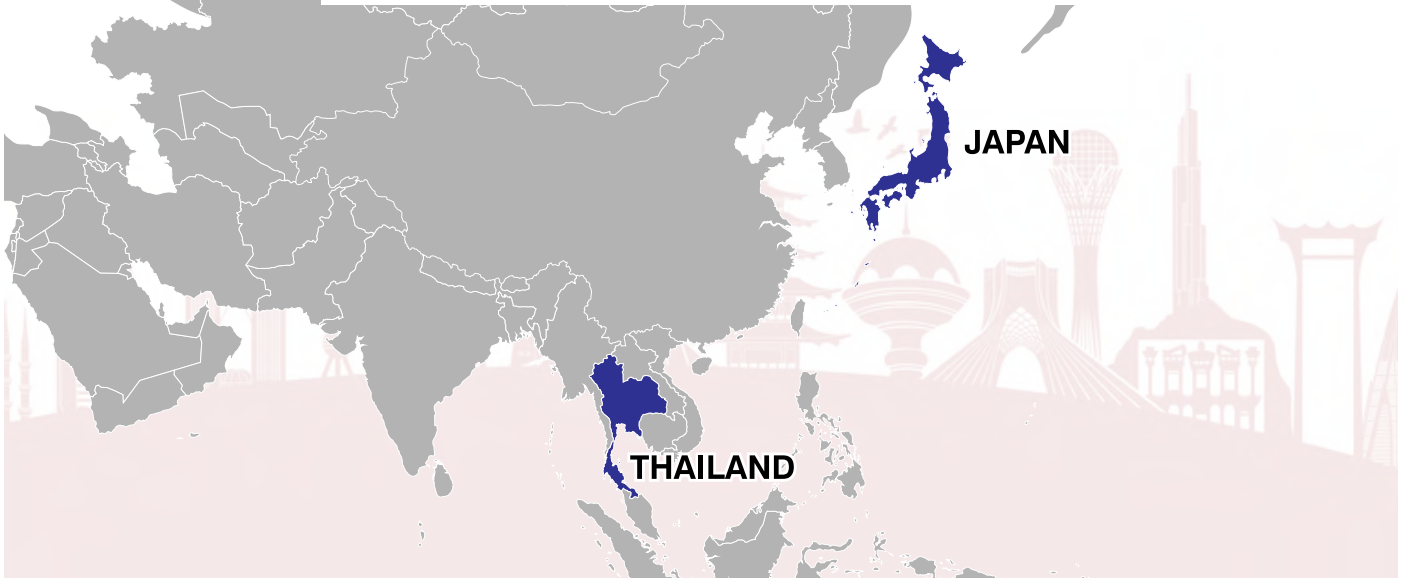
Publisher: Kleen-TEX (Thailand) Co.,Ltd, Sriracha Chonburi, Thailand

Responsible for content: Kleen-TEX (Thailand) Co.,Ltd, Marketing Department

Pictures: Kleen-TEX, Vanilla Photography, Time Shot Photography, Felsch Fotodesign, Shutterstock

Errors and omissions excepted as well as technical changes. Colours shown in this catalogue are just for representation and should not be used as a basis for approvals. Therefore please use our colour-samples where available.

Mats Made in ASIA!



Kleen-Tex Thailand, Sriracha

Kleen-Tex Japan, Kobe

ABOUT KLEEN-TEX

Kleen-Tex Industries is one of the world's leading mat manufacturers. Founded in the United States city of LaGrange in 1967, Kleen-Tex has decades of experience of mat development and production and now has a world-wide reputation for delivering quality innovative products backed up by excellent customer service.

We are proud of our strong manufacturing presence in Asia, where our two operational locations in Thailand and Japan.

- » Decades of experience
- » Innovative products
- » Bespoke Design Service
- » Excellent Customer Relations
- » Fast delivery times
- » Top quality dirt, dust and moisture trapping mats, many of which can be laundered
- » Robust and long-lasting mats
- » Certified and accredited by world-class institutes

KLEEN-TEX – THE WORLD AT YOUR FEET

Kleen-Tex Industries is one of the world's leading manufacturers of mats, with more than five decades of experience in development and production of mats and matting systems.

Our unrivalled expertise allows us to produce a wide range of mats for any application, from dirt and moisture trapping to health and safety and anti-fatigue products. Many of our mats are more than just functional and can also be used for promotional purposes to create a personalised and eye-catching message for your customers and your workforce.

We are passionate about helping you to **Make More of Your Floor.**

Kleen-Tex is a member of various laundry organisations and textile associations:

HOHENSTEIN



Mat placement

Design and technology for practical applications

Decades of experience in the mat business have taught us that a mat can be so much more than just a dirt and moisture trapper at the doorway.

Mats enable you to make use of one of the largest untapped communications opportunities – the floor. They can deliver anything from a simple welcome, to reinforcing your company identity. They can promote sales and marketing messages, highlight health and safety hazards, or simply add a unique design statement to help personalise your building.

CLEANLINESS AND HYGIENE

Did you know that...

- ...an average of 80 % of dirt gets into a building through the entrance?
- ...an average of 40 % of all cleaning costs are spent on floor cleaning?

Strategically placed mats can make a major difference to dirt and moisture entrapment, and dramatically reduce cleaning costs.

THE INTELLIGENT APPROACH

All too often, areas of high footfall are graced by a single, inappropriate mat which soon becomes overwhelmed by the assault on its capabilities.

Kleen-Tex advocates the use of a three-mat system, each of which undertakes a particular function.

- 1 Removes loose grit and some initial moisture
- 2 Soaks up more moisture and any remaining grit
- 3 Takes up the residue, ensuring footwear is as clean and as dry as possible before entering the main part of the building

SAFETY AND WELL-BEING

Did you know that...

- ...nearly a third of workers believe that where they work affects their health?
- ...of those, 44 % of their health issues concerned back pain?

Standing for long periods can put pressure on the back and joints, causing pain and inflammation. Well-being mats with high quality cushioning can help reduce such symptoms.

Well-being mats can also help reduce the spread of bacteria and cross-contamination within buildings.

COMMUNICATION AND IMAGE

Did you know that...

- ...99 % of people look towards the floor when entering a building?
- ...the floor is the largest untapped potential advertising space other than the sky?

People instinctively look towards the floor on entering a building, to check where they are going. This means that the floor offers huge potential as an advertising space, and a mat is an ideal promotional vehicle, carrying a logo or pertinent message as well as trapping dirt and moisture.

Our high-quality print and colour technologies enable us to offer a wide range of promotional and aesthetic mat products to help you make more of your floor.

Mat placement

Design and technology for practical applications



Mat placement

Design and technology for practical applications



Mat placement

Design and technology for practical applications



- 1** Remove coarse grit and heavy soil / Reduce dirt and slash cleaning costs
- 2** Remove grit and moisture / Protect your staff and visitors
- 3** Remove fine dirt and moisture / Give your floors the WOW factor
- 4** Health & safety in the workplace

Entrance Mats

An opportunity to make a great first impression



Entrance Mats

An opportunity to make a great first impression



Our entrance mats offer you a choice of product functionality, and if you follow our recommendations to use The Intelligent Approach to matting, you can significantly reduce your cleaning costs and health and safety risk.

The Intelligent Approach involves using a combination of specially chosen mats which fulfil a particular function:

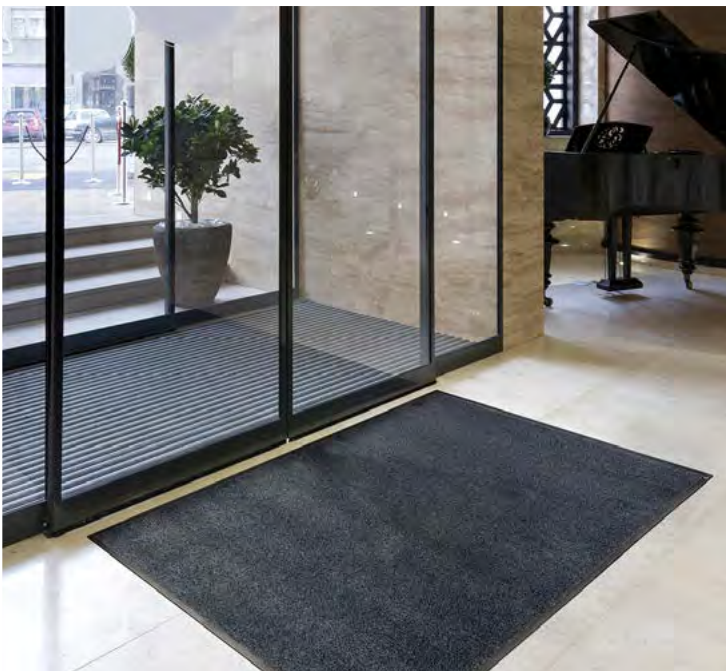
MAT 1 Removes loose grit and some initial moisture

MAT 2 Soaks up more moisture and any remaining grit

MAT 3 Takes up the residue, ensuring footwear is as clean and as dry as possible before entering the main part of the building

We have a wide range of mats to suit any type of building entrance and if you follow our advice to cover the widest area of footfall your mats will help keep your entranceways pristine for much longer.

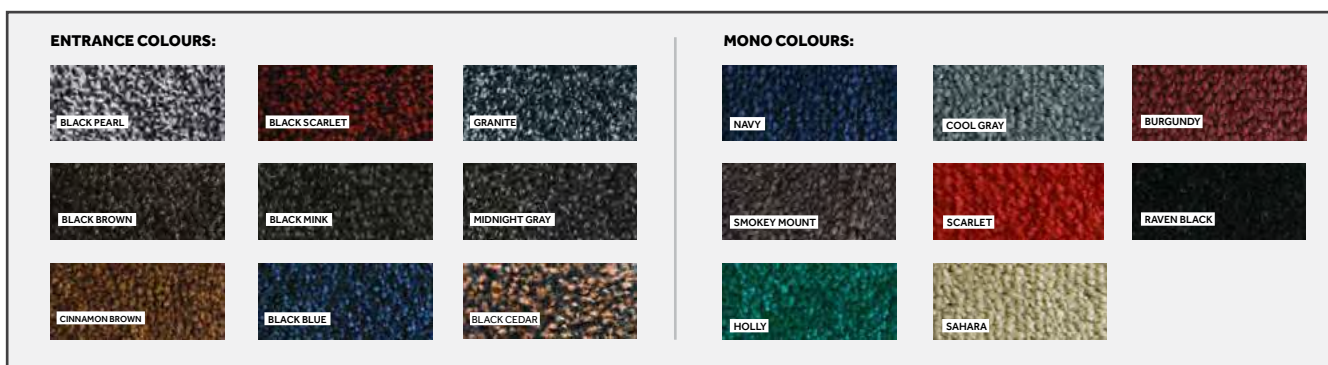
Entrance/ Mono



Dirt & Moisture catching mat

Our Entrance mats are perfectly suited for busy areas due to their high dirt and moisture absorption rate and slip resistant rubber backing.

Entrance/ Mono



Features :

- Dust, dirt and moisture control
- Durable nylon surface
- Slip-resistant rubber backing
- Special size and shape possible
- Anti-static
- Light & colour resistant
- PVC-Free
- 2 years warranty

Applications :

- Indoor placement
- High traffic area
- Entrance door
- Elevator
- Hallway
- Lobby
- Reception counter

MATERIALS :

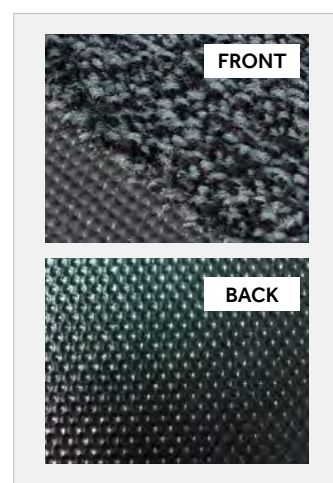
- 100% solution dyed twist nylon surface
- 100% Nitrile rubber backing

STANDARD SIZES : (include 2 cm rubber border)

85x60 cm, 85x75 cm, 85x120 cm, 85x150 cm, 85x175 cm, 85x300 cm, 85x360 cm

115x175 cm, 115x240 cm, 150x175 cm, 150x240 cm, 150x360 cm.

Custom size and shape are upon requested



Total weight :	approx. 2.2 kg/sq.m
Total height :	approx. 7 mm
Dust collecting :	approx. 1,400 g/sq.m
Moisture collecting :	approx. 2,200 g/sq.m

Colour Fastness to Light :	passed JIS L 0843 METHOD A (AATCC 61)
Colour Fastness to Washing & Laundering :	passed JIS L 0844 METHOD B-11
Electrostatic Propensity of Carpets :	passed AATCC 134 (<3.5 kV)
Surface Flammability:	passed ASTM D 2859 (> 1 inch)
High-Traction:	passed NFSI 101-C (Slip and Trip resistance on clean and dry floor)



Iron-Horse/Monotone



Durable Dirt & Moisture catching mat

A high capacity for dirt capture and great durability makes the Iron-Horse and Monotone a popular choice for busy areas such as entrances, corridors, lift areas and reception desks.

Iron-Horse/Monotone



Features :

- Dust, dirt and moisture control
- Durable nylon surface
- Slip-resistant rubber backing
- Special size and shape possible
- Machine washable
- Anti-static
- Light & colour resistant
- PVC-Free
- 2 years warranty

Applications :

- Indoor placement
- High traffic area
- Entrance door
- Elevator
- Hallway
- Lobby
- Reception counter

MATERIALS :

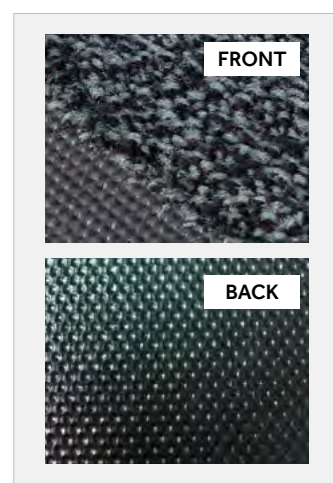
- 100% solution dyed twist nylon surface
- 100% Nitrile rubber backing

STANDARD SIZES : (include 2 cm rubber border)

85x60 cm, 85x75 cm, 85x120 cm, 85x150 cm, 85x175 cm, 85x300 cm, 85x360 cm

115x175 cm, 115x240 cm, 150x175 cm, 150x240 cm, 150x360 cm.

Custom size and shape are upon requested



Total weight :	approx. 2.5 kg/sq.m
Total height :	approx. 8 mm
Dust collecting :	approx. 1,400 g/sq.m
Moisture collecting :	approx. 2,200 g/sq.m

Colour Fastness to Light :	passed JIS L 0843 METHOD A (AATCC 61)
Colour Fastness to Washing & Laundering :	passed JIS L 0844 METHOD B-11
Electrostatic Propensity of Carpets :	passed AATCC 134 (<3.5 kV)
Surface Flammability:	passed ASTM D 2859 (> 1 inch)
High-Traction:	passed NFSI 101-C (Slip and Trip resistance on clean and dry floor)



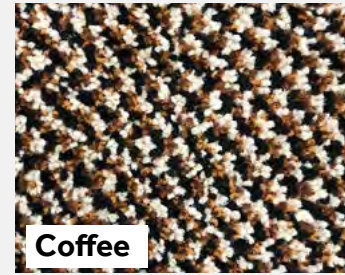
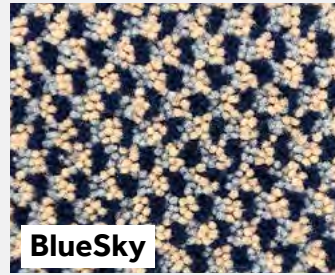
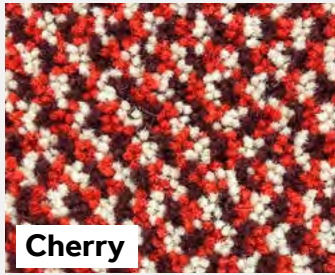


Chic design & colour for **Elegant, Fashionable and Trendy DECORATION**
With **30% extra** trap dust and moisture.



Softer and fluffy feel with the higher pile. The chic pattern and colour is perfectly matching with interior decoration. In addition, more power of dust and moisture trap performance especially in heavy duty area such as door entrance of building, hotel, condominium, house & home, shopping mall, supermarket, showroom, shop, exhibition building etc.

COLOURS :



Features :

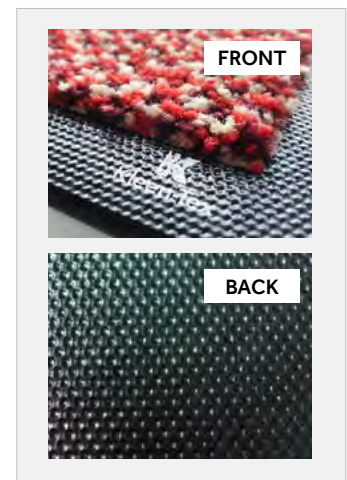
- Chic patterns and colors
- Increase 30% extraordinary dirt & moisture catching performance
- Slip and scratch resistant
- PVC Free
- Light resistant
- Color resistant
- 2 years warranty

Applications :

- Door Entrance
- High traffic area
- Hallway
- Elevator area

MATERIALS :

- Pile: 100% solution dyed nylon (cut pile)
- Backing: 100% Nitrile rubber



STANDARD SIZES : (include 2 cm rubber border)

90x60 cm, 90x120 cm, 90x150 cm, 90x300 cm, 90x360 cm
 120x175 cm, 120x240 cm, 150x175 cm, 150x240 cm, 150x360 cm.
 Custom size is depended upon request.

- Total weight :** approx. 2.7 kg/sq.m
- Total height :** approx. 10 mm
- Dust collecting :** approx. 1,800 g/sq.m
- Moisture collecting :** approx. 2,800 g/sq.m

Colour Fastness to Light : passed JIS L 0843 METHOD A (>7)
 Colour Fastness to Washing & Laundering : passed JIS L 0844 METHOD B-11 (rate 4-5)
 Surface Flammability: passed ASTM D 2859 (> 1 inch)
 High-Traction: passed NFSI 101-C
 (Slip and Trip resistance on clean and dry floor)



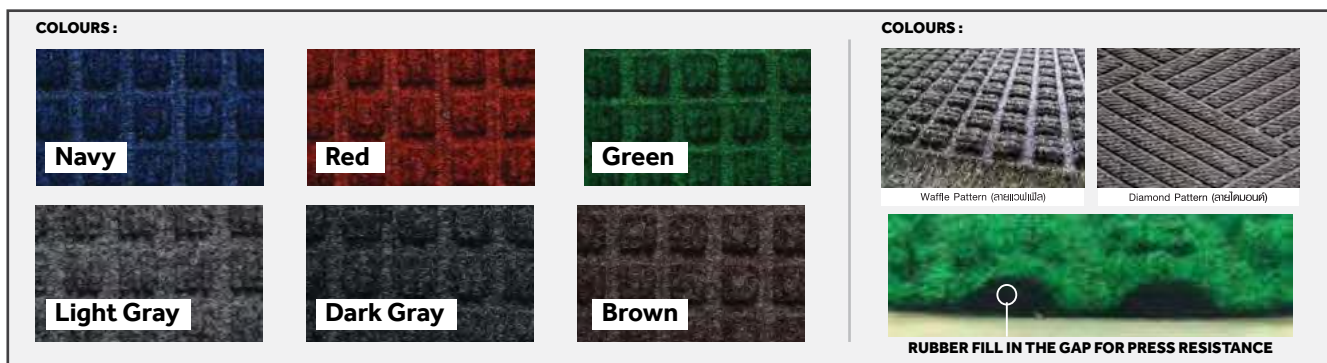
Water Horse



High Water retention mat

This mat comes with a containment border capable of holding up to 4.5 litres of water per square metre. The Water-Horse is designed to remove dirt, grit and water from footwear and guarantees skid resistance. Ideal for busy entrances, it can be used both indoors and outdoors.

Water Horse



Features :

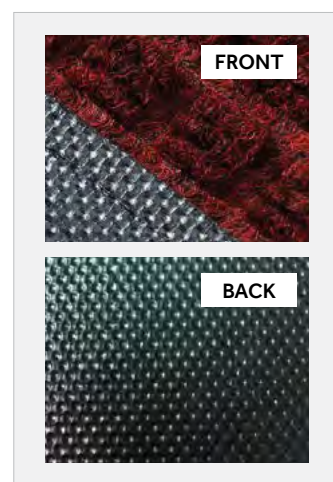
- Retain water up to 1.5-4.5 sq.m
- Remove dust, dirt and water
- Extremely durable surface
- Embossed waffle or diamond design
- Slip-resistant rubber backing
- Anti-static
- Light & colour resistant
- PVC-Free
- 2 years warranty

Applications :

- Indoor & Outdoor placement
- High traffic area
- Entrance door
- Wash basin or sink

MATERIALS :

- 100% Polypropylene solution dyed surface
- 100% Nitrile rubber backing



STANDARD Sizes : (include 3 cm rubber border)

Waffle Pattern

44 x 74 cm, 62 x 88 cm, 88 x 116 cm, 88 x 146 cm, 114 x 174 cm, 114 x 286 cm, 146 x 286 cm.

Diamond Pattern

57 x 88 cm, 88 x 114 cm, 88 x 146 cm, 114 x 176 cm, 114 x 288 cm.

Total weight :	approx. 3.5 kg/sq.m
Total height :	approx. 7 mm
Dust collecting :	approx. 1,000 g/sq.m
Moisture collecting :	approx. 1,500 g/sq.m for fabric border approx. 4,500 g/sq.m for rubber border

Electrostatic Propensity of Carpets:	passed AATCC 134 (<3.5 kV)
Surface Flammability:	passed ASTM D 2859 (> 1 inch)
Antifungal activity:	passed AATCC TM 30 TEST III
High-Traction:	passed NFSI 101-C (Slip and Trip resistance on clean and dry floor)

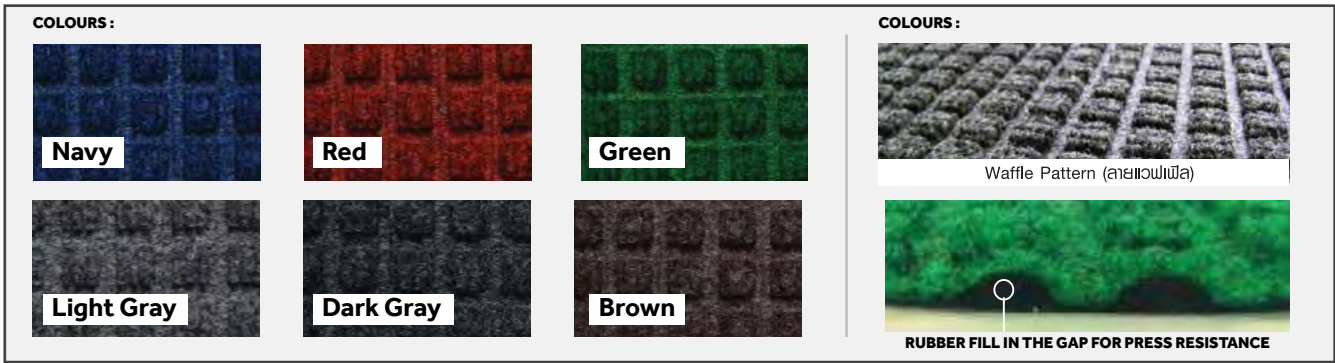


Water Horse Window



Water retention mat with Welcome message

Water Horse Window



Features :

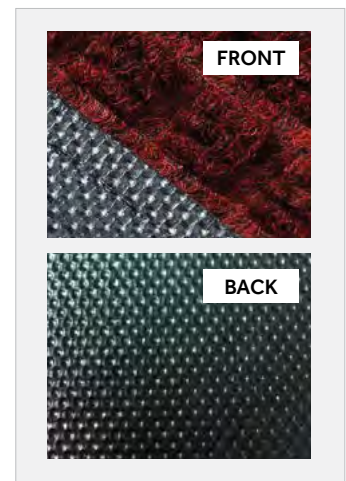
- With Welcome message or bespoke message*
- Retain water up to 4.5 Litre/sqm.
- Perfect for Raining season
- Non-slip backing and extremely durable
- Scrape dust & dirt from shoes
- Anti-static
- Light resistance
- No PVC

Applications :

- Entrance Welcome Mat
- Suitable for indoor and outdoor
- In front of restroom
- High traffic area.

MATERIALS :

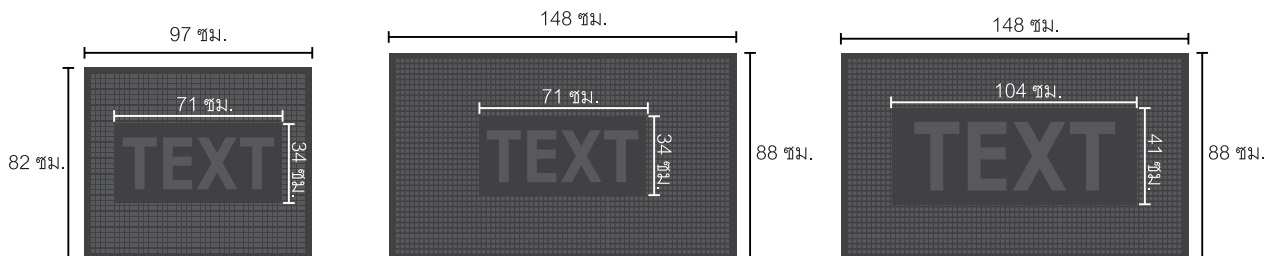
- 100% polypropylene solution dyed surface
- 100% nitrile rubber



PRODUCT DATA :

Size include 3 cm border	82 x 97 cm	88 x 148 cm	
Window area for message	71 x 34 cm	71 x 34 cm	41 x 104 cm
Pattern	Waffle pattern with "WELCOME" message*		
Total weight per piece (approx.)	2.8 kg	4.5 kg	
Total height (approx.)	7 mm		

*Custom message is available upon request with minimum order quantity



- Dust Collecting :** approx. 1,000 g/sqm
- Moisture Collecting :**
- Fabric border** approx. 1,500 g/sqm
- Rubber border** approx. 4,500 g/sqm

Electrostatic Propensity :	passed AATCC 134 (<3.5 kV)
Surface Flammability :	passed ASTM D 2859 (> 1 inch)
High-Traction :	passed NFSI 101-C (Slip and Trip resistance on clean and dry floor)

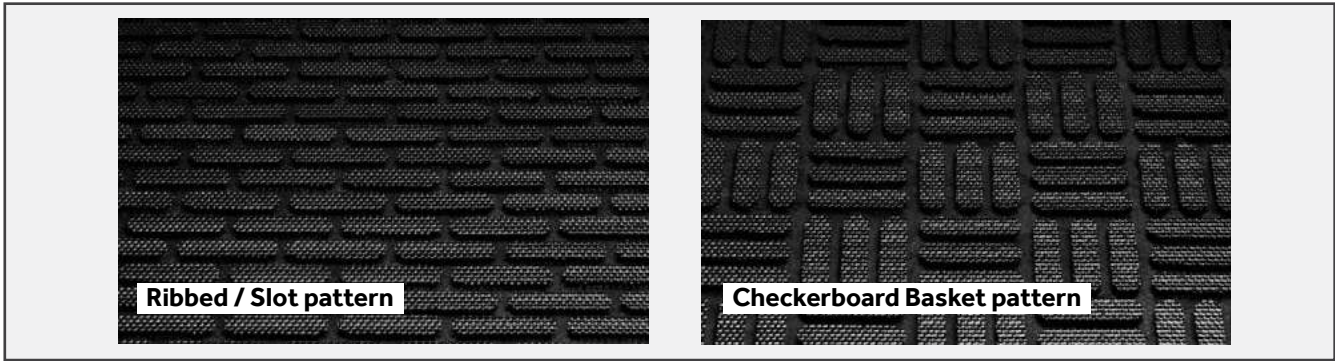


Kleen-Scrape



Hardwearing multi-purpose rubber mat, 100% nitrile rubber.
Suitable for indoor and outdoor use.

Kleen-Scrape

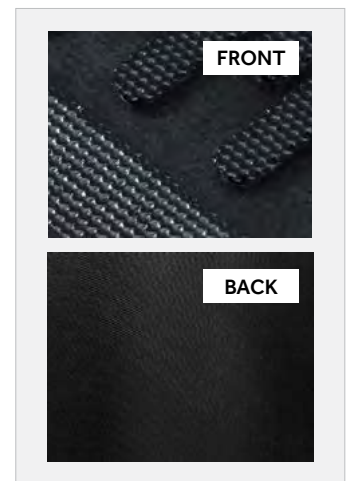


Features :

- Excellent traps dirt, soil, sand
- Reduce impact force of the equipment, tools when fall down
- Slip resistant
- Containment border capable to holding water inside
- PVC-Free
- Light resistant

Applications :

- Changing room
- Front of machine
- Entrance
- Water cooler area
- Bar
- Indoor and outdoor



PRODUCT DATA :

Surface pattern	Ribbed / Slot pattern	Checkerboard Basket pattern
Size	76 x 86 cm 86 x 140 cm 111 x 170 cm	111 x 170 cm
Material	100% nitrile rubber	
Weight (approx.)	4.4 kg / sq.m	
Total height (approx.)	6 mm	
Dust collecting (approx.)	700 g / sq.m	

Electrostatic Propensity of Carpets:	passed AATCC 134 (<3.5 kV)
Surface Flammability:	passed ASTM D 2859 (> 1 inch)
High-Traction:	passed NFSI 101-C (Slip and Trip resistance on clean and dry floor)
Antifungal activity:	passed AATCC TM 30 TEST III



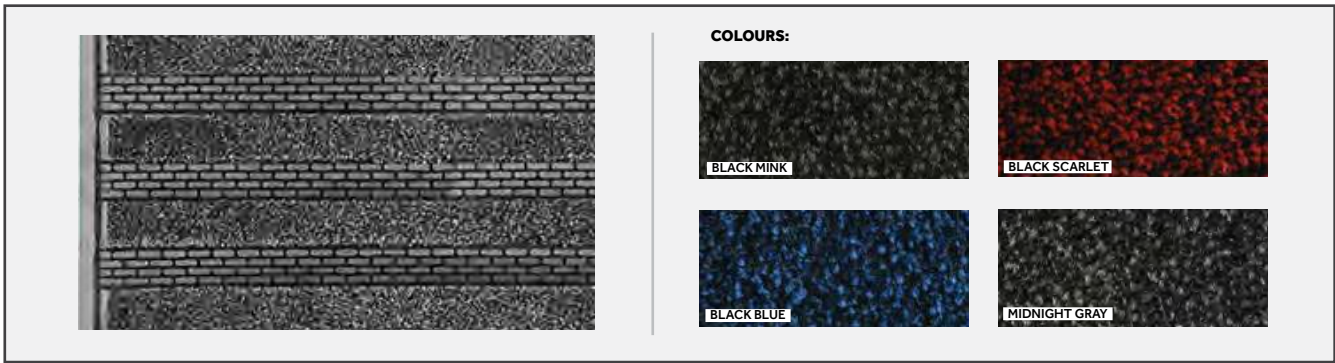
Combi Mat



2 in 1 Heavy duty dirt absorption

This clever mat is constructed of emboss capsule design rubber alternated with nylon for better remove dirt and dust from shoe soles.

Combi Mat

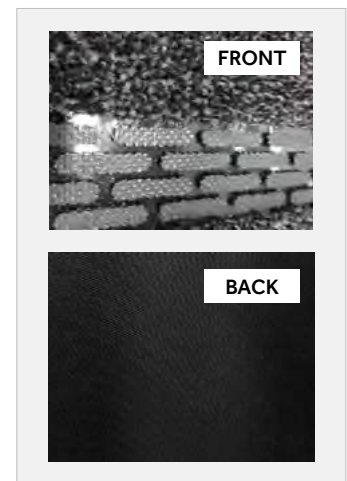


Features :

- Effectively remove dust, dirt & moisture
- Combination of nitrile rubber and nylon in one piece
- Skid resistant rubber backing
- Light resistant
- PVC-Free
- 2 years warranty

Applications :

- Indoor and outdoor
- High traffic entrance



PRODUCT DATA :

Size	70 x 88 cm	90 x 150 cm
Material	- 100% high-twist solution dyed nylon - 100% nitrile rubber	
Dust collecting (approx.)	1,000 g/sq.m	
Water collecting (approx.)	900 g/sq.m	
Height (approx.)	10 mm	
Weight (approx.)	2.8 kg/piece	6 kg/piece

*Other colour is upon requested

Colour Fastness to Light:	passed JIS L 0843 METHOD A
Colour Fastness to Washing & Laundering:	passed JIS L 0844 METHOD B-11
Surface Flammability:	passed ASTM D 2859 (> 1 inch)
High-Traction:	passed NFSI 101-C (Slip and Trip resistance on clean and dry floor)

Logo & Promotional Mats

Tap into the commercial power of your floor



Logo & Promotional Mats

Tap into the commercial power of your floor



Logo & Promotional mats are a great way of communicating a wide number of messages to your customers. The floor is the largest untapped advertising space other than the sky and we can help you harness its power.

Research shows that 99 % of people instinctively look down when entering a building or room, to check the way forward is safe. That means that you could reach 99 % of people entering your premises or walking into a particular area of your building with a powerful promotional message.

This could be anything from reinforcing your brand, to highlighting any special offers, or even warning of safety hazards.

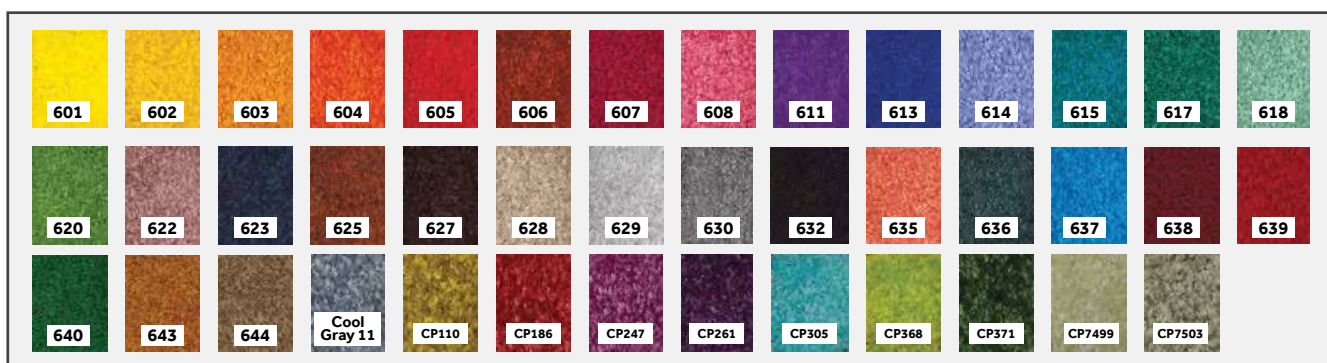
Our high-quality print technologies and excellent colour reproduction means that we can provide eye-catching and innovative mats to suit any purpose or occasion.

Logo



Make a difference in your own style

The lightweight custom logo or bespoke mat enhance impression at your entrance.



Features :

- Durable nylon surface with a personal touch
- A choice of 42 standard colour.
- Special size, colour and shape possible
- Dust, dirt and moisture control
- Slip-resistant rubber backing
- Anti-static
- Light resistant
- PVC-Free
- 2 years warranty

Applications :

- Indoor placement
- Corporate identity
- Point of Sale
- Marketing message
- Entrance
- Lobby / Elevator
- Reception counter
- Teaching materials

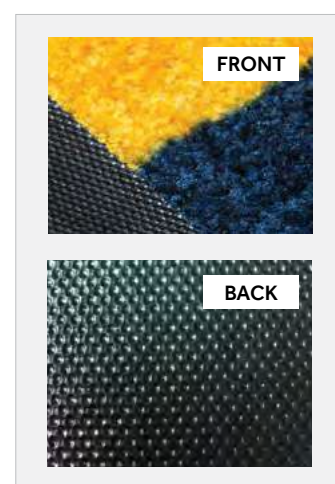
MATERIALS :

- 100% High-twist nylon surface
- 100% Nitrile rubber backing

STANDARD Sizes : (include 2 cm rubber border)

85 x 60 cm, 85 x 75 cm, 85 x 120 cm, 85 x 150 cm, 85 x 300 cm
 115 x 175 cm, 115 x 240 cm, 115 x 300 cm, 115 x 360 cm
 150 x 175 cm, 150 x 240 cm, 150 x 300 cm, 150 x 360 cm, 150 x 400 cm.

Custom size, colour and shape are upon requested



- Total weight :** approx. 2.2 kg/sq.m
- Total height :** approx. 6.5 mm
- Dust collecting :** approx. 1,100 g/sq.m
- Moisture collecting :** approx. 2,100 g/sq.m

Colour Fastness to Light :	passed JIS L 0843 METHOD A (AATCC 61)
Colour Fastness to Washing & Laundering :	passed JIS L 0844 METHOD B-11
Electrostatic Propensity of Carpets :	passed AATCC 134 (<3.5 kV)
Surface Flammability:	passed ASTM D 2859 (> 1 inch)
High-Traction:	passed NFSI 101-C (Slip and Trip resistance on clean and dry floor)



Jet-Print



Enhance corporate image and identity.

A very durable mat with customizable logo, brand or message to give the best impression to your visitors and enhance corporate image.



Features :

- Durable nylon surface with a personal touch
- A choice of 42 standard colour.
- Special size, colour and shape possible
- Dust, dirt and moisture control
- Slip-resistant rubber backing
- Anti-static
- Light resistant
- PVC-Free
- 2 years warranty
- Machine washable

Applications :

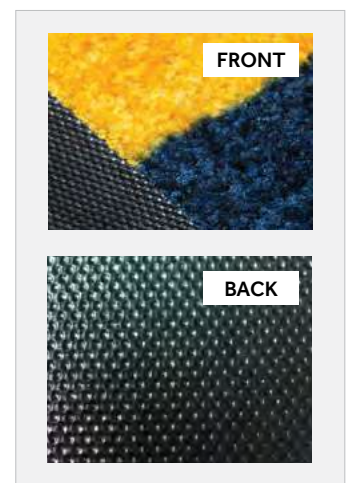
- Indoor placement
- Corporate identity
- Point of Sale
- Marketing message
- Entrance
- Lobby / Elevator
- Reception counter

MATERIALS :

- 100% High-twist nylon surface
- 100% Nitrile rubber backing

STANDARD Sizes : (include 2 cm rubber border)

85 x 60 cm, 85 x 75 cm, 85 x 120 cm, 85 x 150 cm, 85 x 300 cm
 115 x 175 cm, 115 x 240 cm, 115 x 300 cm, 115 x 360 cm
 150 x 175 cm, 150 x 240 cm, 150 x 300 cm, 150 x 360 cm, 150 x 400 cm.
 Custom size, colour and shape are upon requested

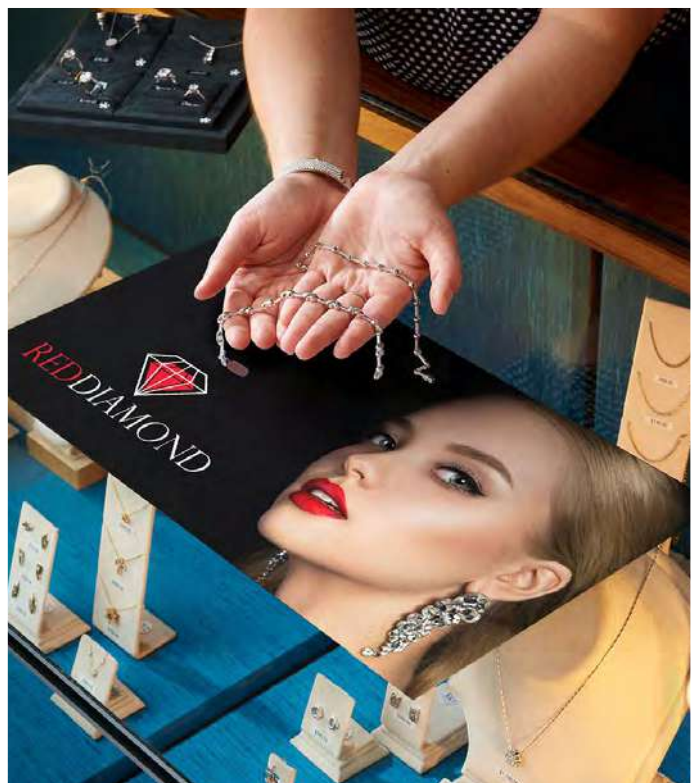


- Total weight :** approx. 2.6 kg/sq.m
- Total height :** approx. 7 mm
- Dust collecting :** approx. 1,100 g/sq.m
- Moisture collecting :** approx. 2,100 g/sq.m

- Colour Fastness to Light : passed JIS L 0843 METHOD A (AATCC 61)
- Colour Fastness to Washing & Laundering : passed JIS L 0844 METHOD B-11
- Electrostatic Propensity of Carpets : passed AATCC 134 (<3.5 kV)
- Surface Flammability: passed ASTM D 2859 (> 1 inch)
- High-Traction: passed NFSI 101-C (Slip and Trip resistance on clean and dry floor)



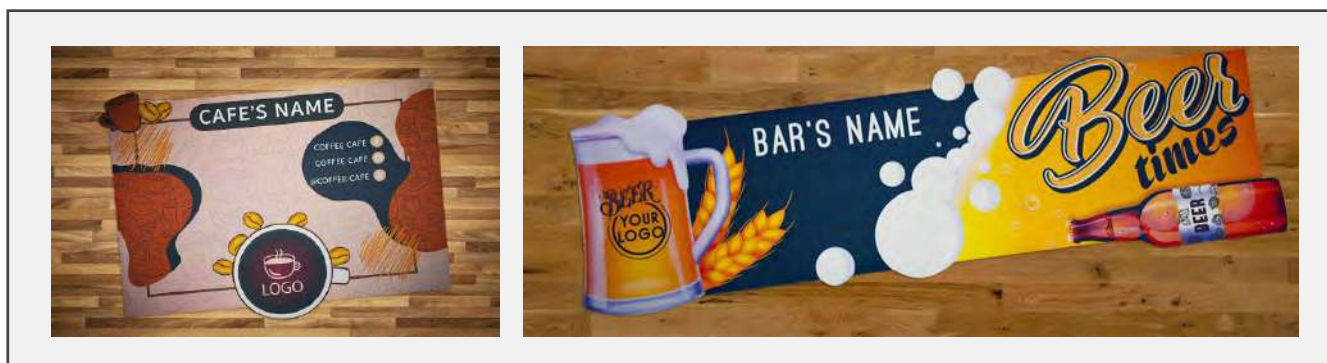
Ads-Mat



Bring your advertising message to life with full colour

Display your advertising message with photo-realistic precision at the point of purchase.

The Ads-Mat is especially effective for increasing the level of attention or emotionally charging your message at the point of sale - perfect for promotions and events.



Features :

- Photo-realistic sublimation print
- Popular polyester and flexible nitrile rubber combination
- Slip-resistant rubber
- Many different sizes
- No PVC
- Washable

Applications :

- Events
- Point of Sale
- Advertising
- Teaching & learning Material
- Premium Gift

MATERIALS :

- Knitted Polyester
- 100% Nitrile Rubber (NBR), smooth backing

Standard Size : with no border

Width : 19, 29, 39, 59, 115 cm

Length : max. 200 cm

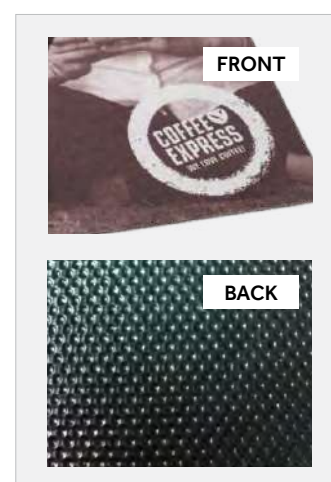
Max size : 115 x 200 cm

Color :

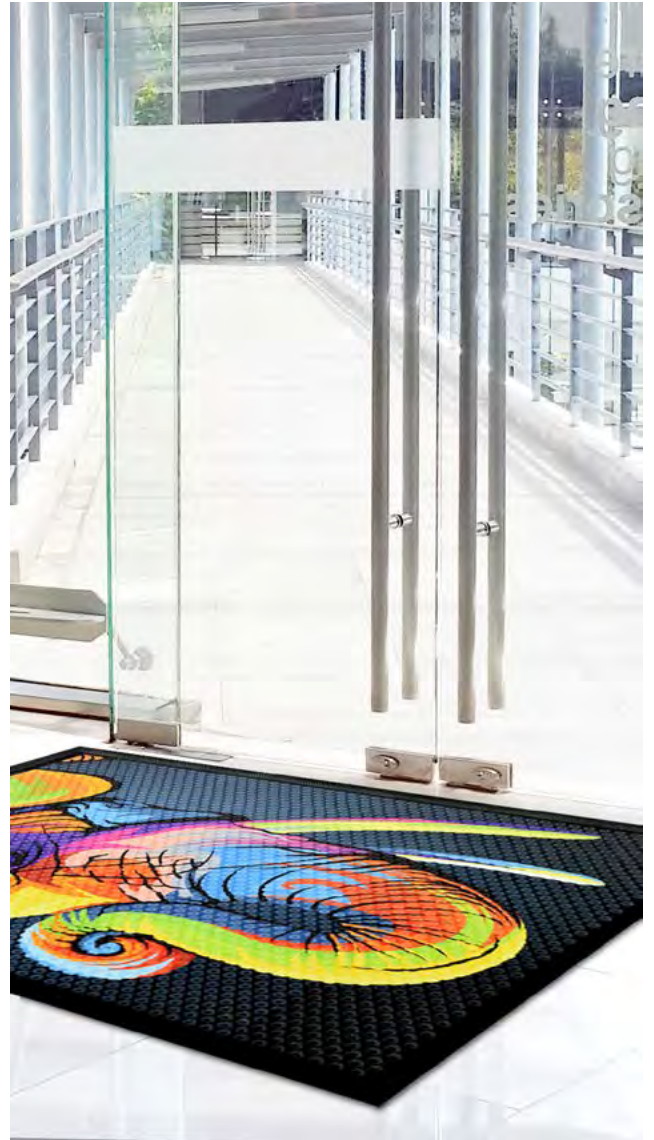
- Photorealistic print (CMYK and RGB) and Pantone colours possible.

Total weight : approx. 1.50 kg/sq.m

Total height : approx. 1.50 mm



Kleen-Scrape Poster



Skid resistant rubber mat with messages, logo or graphic design. Molded with embossing dot pattern and containment border to collect soil and water.

Kleen-Scrape Poster

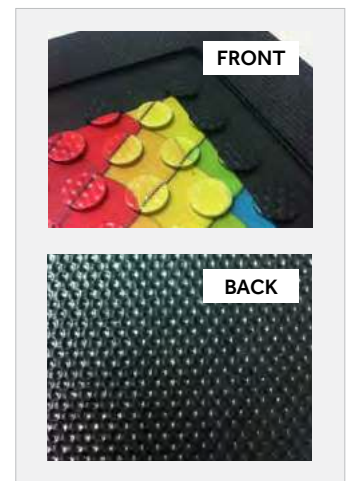


Features :

- Bespoke inlaid poster messages, logo or graphic design.
- Slip resistant rubber backing
- Floor protector
- Containment border traps moisture or spilt liquid preventing damage to the surrounding floor area
- Shoe scraper

Applications :

- Signage, Safety messages
- Point of sale
- Entrance
- Workstation, Processing area.
- Indoor placement



PRODUCT DATA :

Size (include 2.5 cm border)	76 x 86 cm	86 x 140 cm	111 x 170 cm
Printing area	62 x 73 cm	73 x 127 cm	96 x 158 cm
Weight (approx.):	2 kg/pc	4 kg/pc	6 kg/pc
Material:	100% Nitrile rubber + Printed PVC		
Pattern:	Dot pattern		
Height (approx.):	5 mm		
Dust collecting:	Approx. 900 g/sq.m		
Moisture collecting:	Approx. 2,200 g/sq.m		



Electrostatic Propensity of Carpets:	passed AATCC 134 (<3.5 kV)
Surface Flammability:	passed ASTM D 2859 (> 1 inch)
High-Traction:	passed NFSI 101-C (Slip and Trip resistance on clean and dry floor)

Anti-Fatigue Mats

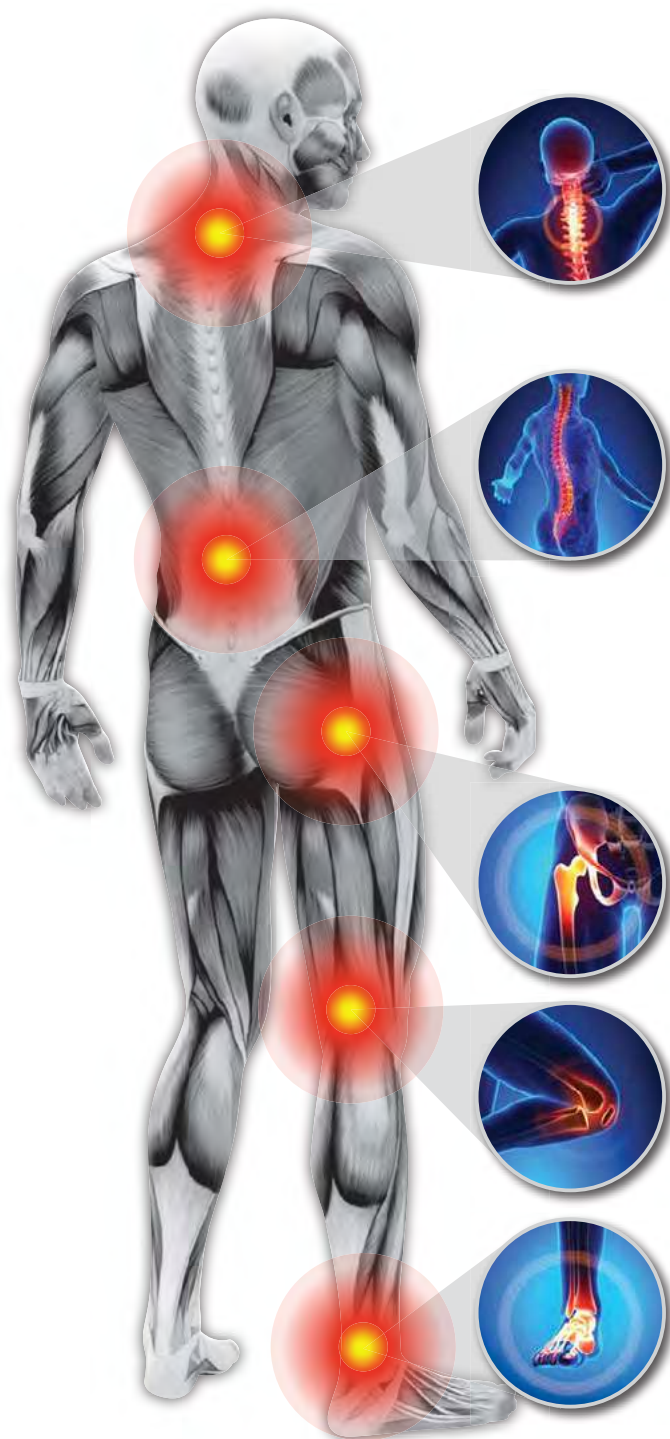
Prevent possible health issues caused by standing for long periods



A workforce that spends a lot of time on its feet is susceptible to back and joint damage, so it makes both pastoral and economic sense to protect employees from the stresses and strains of standing up to work.

With sitting set to be classed as the new smoking in terms of negative affects on long-term health, sedentary workers are being encouraged to spend more time standing up to work. But they, too, need to be protected from potential back and joint injuries.

Stand-On Products



The workplace as a health hazard:

Roughly eight out of ten people at work are exposed to physical health risks in the workplace. This was discovered when a survey was carried out as part of the micro-census

Labour Force Survey by Statistik Austria in 2013. The most frequently mentioned physical strains resulting from work were ergonomic strains and accident risks. The most serious health issue is back problems caused by work, mentioned by nearly a third of the people affected (32.2 %), about one fifth reported having problems with the neck, shoulders, arms or hands (19.0 %), and for 16.3 % the hips, legs or feet were affected. (Source: www.statistik.at)

Thus, for example, long periods of standing at work can lead to back problems as well as problems with the legs and feet. Tension, stiffness, inflammation and varicoses may result.

A useful contribution to on-the-job safety and employee health is equipping (standing) workstations with special workstation and anti-fatigue mats.

Benefits of work and anti-fatigue mats:

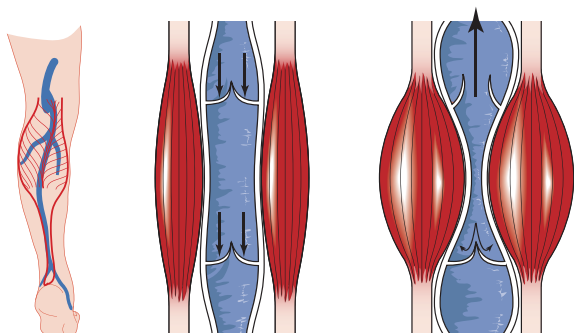
The ergonomically structured surface and the flexible material can improve blood flow and oxygen supply

Concentration and productivity can be boosted

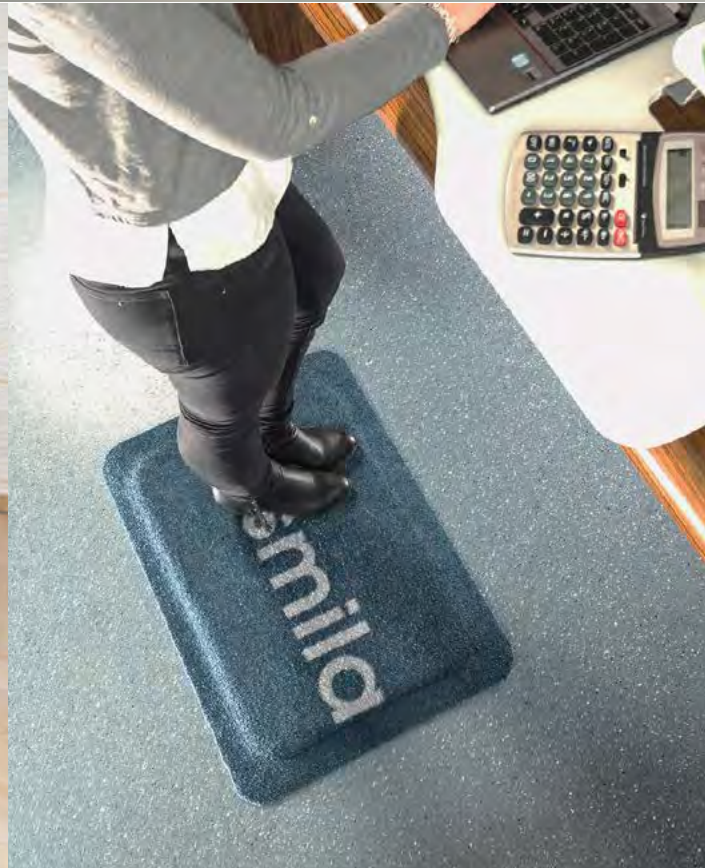
All physical complaints leading to sickleave or downtime can be reduced

Protection from unhealthy cold radiating from the ground

Provide secure and slip-proof footing, especially in wet environments



Kleen-Comfort Series



Reduce fatigue and comfort your feet

Kleen-Comfort Series

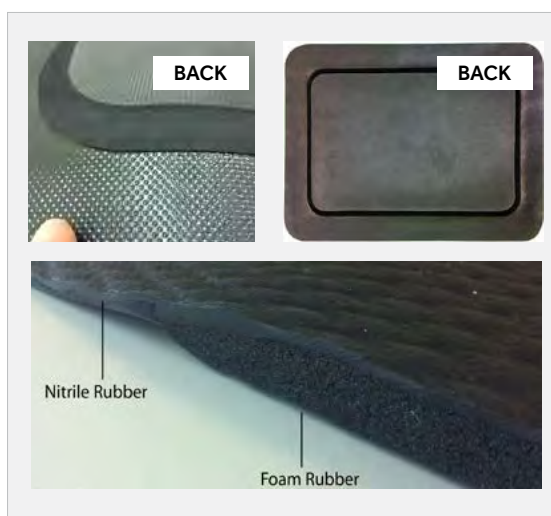


Features :

- Excellent anti-fatigue properties
- Relief for muscles and joints
- Low profile edge to prevent tripping
- Durable surface
- Slip-resistant
- Light-resistant
- PVC-Free
- 2 years warranty

Applications :

- Counter services
- Cashier
- Workstations
- Reception counter
- Ironing table
- Event



PRODUCT DATA :

	Standard	Safety and Rubber Top Design	Soft	Design
Surface	100% Nitrile rubber	100% Nitrile rubber + Printed PVC	100% Solution Dyed Nylon + 100% Nitrile rubber	100% Printed Nylon + 100% Nitrile rubber
Backing	100% Nitrile Foam			
Size	60x85 cm		55x78 cm	
Weight (approx.)	6 kg / sq.m		5.5 kg / sq.m	
Total height (approx.)	18 mm			
Compression and recovery (Static load)				
Immediately		92.8%	86.4%	89%
After 96 hours		98.4%	97.2%	98%

* Custom size and colour are upon requested

Colour Fastness to Light :	passed JIS L 0843 METHOD A (same as AATCC 61)
Surface Flammability :	passed ASTM D 2859 (> 1 inch)
Electrostatic Propensity of Carpets:	passed AATCC 134 (<3.5 kV)
Antifungal activity:	passed AATCC TM 30 TEST III (Kleen-Comfort Standard)
High-Traction:	passed NFSI 101-C (Slip and Trip resistance on clean and dry floor)



Kleen-Foam



A durable rubber foam anti-fatigue mat for dry area. This 100% nitrile foam mat literally cushion employees who have to stand for long period of time, helping to reduce fatigue and improve well-being.

Kleen-Foam



Features :

- Excellent anti-fatigue properties
- Relief for muscles and joints. Improves employee well being
- Skid resistant rubber back
- Impact resistance minimizes product or tools breakage due to accidental drop
- PVC-Free
- Light-resistant
- 2 years warranty

Applications :

- Indoor or Outdoor
- Workstations and counters

MATERIALS :

- 100% Nitrile rubber foam

STANDARD Sizes :

45 x 70 cm



Total weight : approx. 1 kg/pc

Total height : approx. 11 mm

Tensile Strength:	passed ISO 37 (>0.5 Mpa)
Compression Set @ 70 oC x 24 hrs:	passed ISO 815 (<50%)

*For all mats we reserve the right of production-related tolerance of +/- 5% in size. Colours are subject to commercial tolerance.

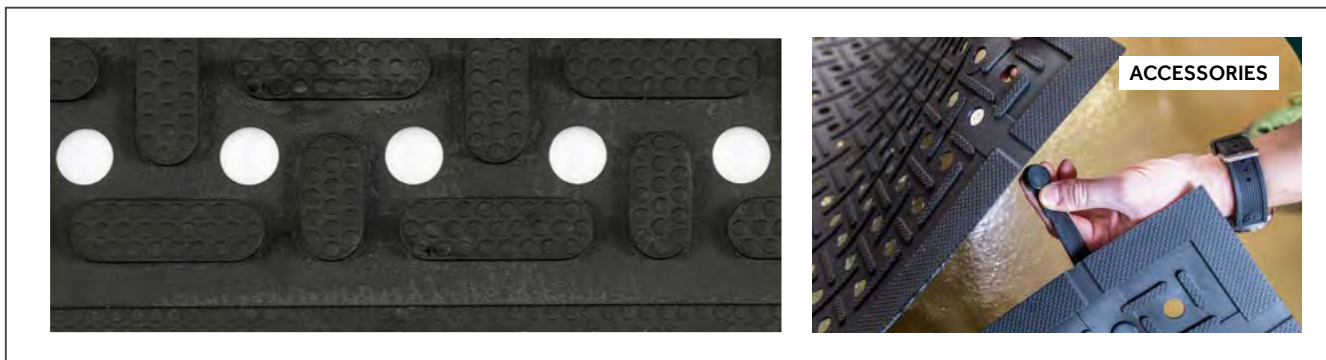
Kleen-Thru Plus



Anti-Slip mat for wet area with anti-bacterial properties

With ribbed holes for drainage, this washable workspace mat is made from 100 % nitrile rubber with built-in anti-bacterial properties* that last for the life of the mat. Integrated with foam nitrile rubber, this versatile mat helps to ease the fatigue in jobs where long periods of standing are required, such as professional kitchens, bar areas, wet rooms and production facilities.

Kleen-Thru Plus



Features :

- Anti-bacterial properties make it ideal for kitchen placement
- Anti-fatigue properties and relief for muscles and joints
- Ribbed surface with holes for drainage
- Oil and Chemical resistant
- Skid resistant
- Light-resistant
- Make in Europe
- PVC-Free
- 2 years warranty

Applications :

- Indoor or outdoor placement
- Professional kitchen
- Wet areas
- Bars
- Changing room
- Processing line

MATERIALS :

- 100% Nitrile rubber

Available size :

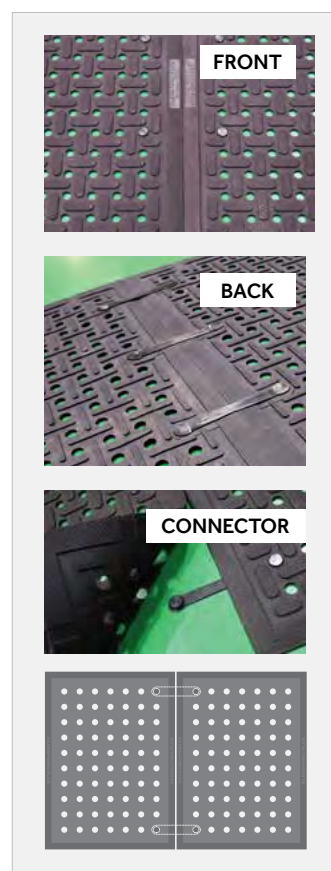
86x60 cm , 86x143 cm



Accessories:

Mat Connector for secure linking of * NAMSA (North American Science Associates) has indicated that Kleen-Thru Plus is rated 0/NZ (no growth, no zone) in the AATCC TM 30, multiple mats Part 111 test, meaning this mat has an effective fungi static treatment that helps control the bacterial and fungal growth that cause odour in the mat.

The anti-microbial treatment is registered in the USA by the Environmental Protection Agency and is bound and non-migrating, which means it is present for the life of the mat and will not wash off or rub off even when subjected to prolonged industrial washing. This treatment only protects the Kleen-Thru Plus mat and not the people who are using it. Always clean this product properly after each use.



Total weight : approx. 4.33 kg / sq.m
Overall Height : approx. 8 mm
Accessory: Connector for secure linking of mulitble mats

Anti-bacterial test* :	passed AATCC 30/ AATCC 100
Surface Flammability:	passed EN 13501-1/Efl-s1
Antistatic:	passed EN 14041
High-Traction:	passed NFSI 101-C

*For all mats we reserve the right of production-related tolerance of +/- 5% in size. Colours are subject to commercial tolerance.

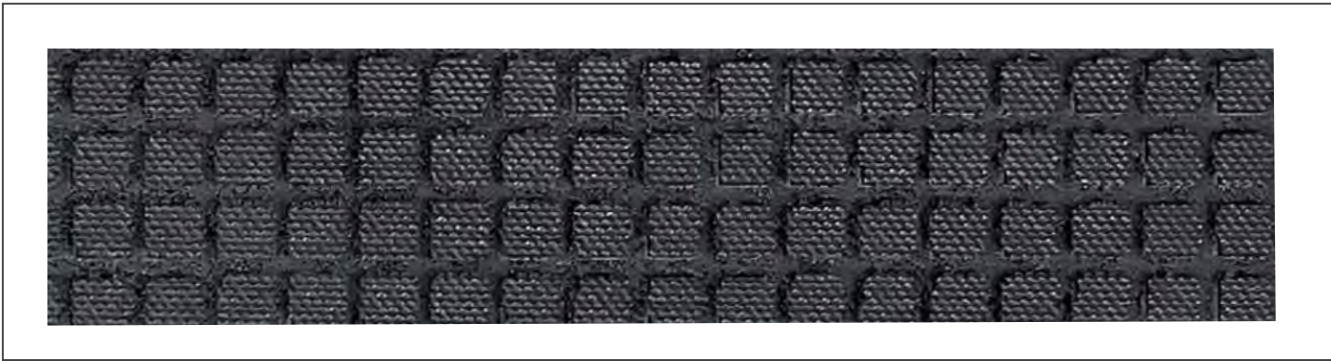
Kleen-Kushion



Anti-fatigue multipurpose rubber foam

The rubber foam construction of this anti-fatigue mat combines durability with practicality. It is suitable for indoor and outdoor use, in wet or dry conditions offering comfort and protection wherever workers stand.

Kleen-Kushion



Features :

- Castellated pattern for better grip
- Rubber foam construction for comfort
- Anti-fatigue mat
- Skid resistant rubber back
- Containment border capable to holding water inside
- PVC-Free
- Light-resistant
- 2 years warranty

Applications :

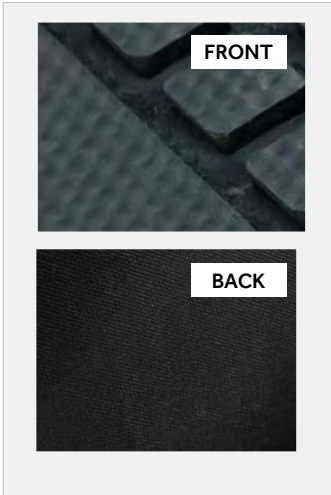
- Indoor or Outdoor
- Workstations and counters
- Water cooler
- Behind counter bar

MATERIALS :

- 100% Nitrile rubber foam

Standard size (cm) :

62x88 cm, 87x140 cm, 115x175 cm



Weight : approx. 4 kg / sq.m
Height : approx. 5 mm

Electrostatic Propensity of Carpets:	passed AATCC 134 (<3.5 kV)
Surface Flammability:	passed ASTM D 2859 (> 1 inch)
Compression and recovery (static load)	87.6% recovery (immediately) 95.5% recovery (after 96 hours)
Antifungal activity:	passed AATCC TM 30 TEST III
High-Traction:	passed NFSI 101-C (Slip and Trip resistance on clean and dry floor)



*For all mats we reserve the right of production-related tolerance of +/- 5% in size. Colours are subject to commercial tolerance.

Health & Safety Mats

Practical and Protective Mats for all eventualities



Health & Safety Mats

Practical and Protective Mats for all eventualities



Health and safety in the workplace is vitally important for both workers and visitors in a building. Recognising and preventing hazardous situations in the workplace is vital to ensure a happy and productive workforce which operates in a safe environment and for customers to feel safe and protected when visiting.

Our range of Well-being mats offers a great choice of carefully designed, practical products that suit your particular workspace.

Kable Mat Series



Cables & wires cover

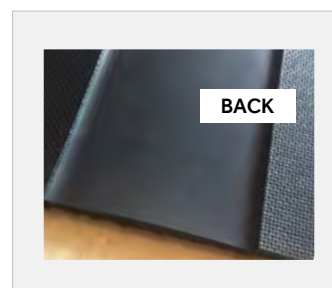
This cleverly designed mat has a durable nylon or rubber surface and rubber backing with integrated cable run to secure loose cables and wires and a high-visibility border to highlight a potential hazard.

Kable Mat Series



Features :

- Tidies loose wires and cables
- Reduce tripping accidents in the workplace
- Eye-catching border to highlight potential hazard
- Skid resistant rubber back with integrated cable run
- PVC-Free
- 2 years warranty



Applications :

- Indoor or Outdoor
- Anywhere loose cables or wires present a possible trip hazards

PRODUCT DATA :

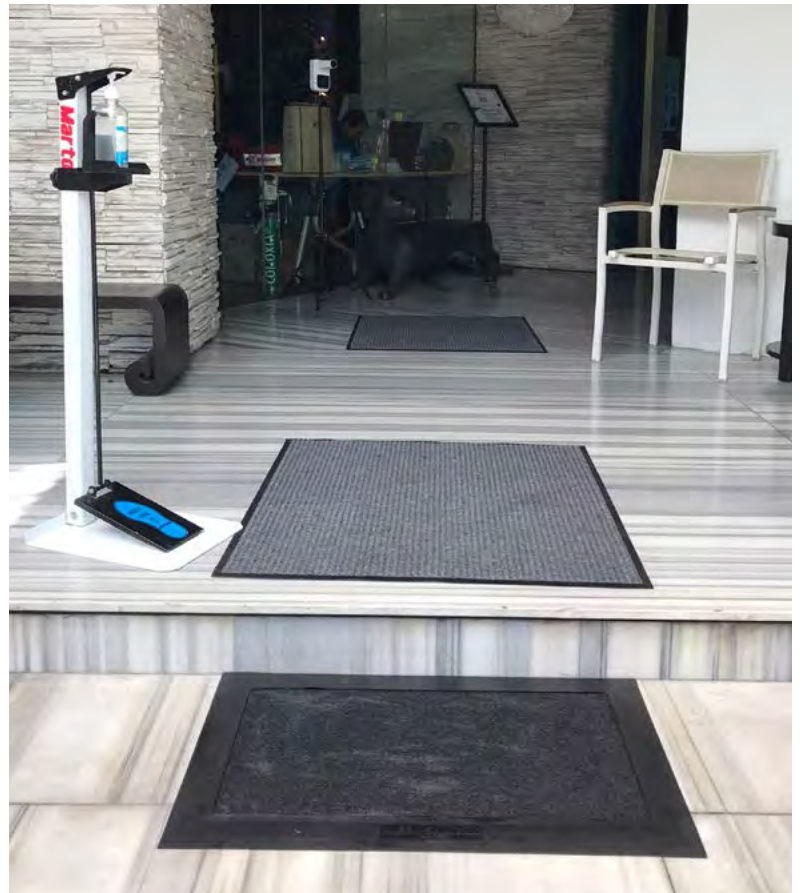
	Kable Mat	Kable-Mat Rubber Top	Kable-Mat Rubber Top Logo
Front	100% Printed nylon with yellow strip at edge	100% Nitrile rubber with yellow strip at edge	100% Nitrile rubber with PVC message*
Back	100% Nitrile rubber with integrated cable run		
Surface	30x60 cm, 30x100 cm, 30x150 cm 30x200 cm, 30x250 cm, 30x300 cm 50x100 cm, 50x150 cm, 50x200 cm 50x250 cm, 50x300 cm	50x100 cm	
Weight (approx.)	4.2 kg / sq.m	5 kg / sq.m	
Height (approx.)	15 mm.	10 mm.	

* Custom size and colour are upon requested



Colour Fastness to Washing & Laundering:	passed JIS L 0844 METHOD B-11
Surface Flammability:	passed ASTM D 2859 (> 1 inch)
High-Traction:	passed NFSI 101-C (Slip and Trip resistance on clean and dry floor)

Kleen-Sanitize Footbath



Shoes sanitizing footbath

Kleen-Sanitize footbath is designed for hygiene and safety purpose with containment footbath and absorbent pad to fill disinfectant and clean shoe soles before entry building. The new version is better lock the absorbent pad to stay still in the bath.

Kleen-Sanitize Footbath

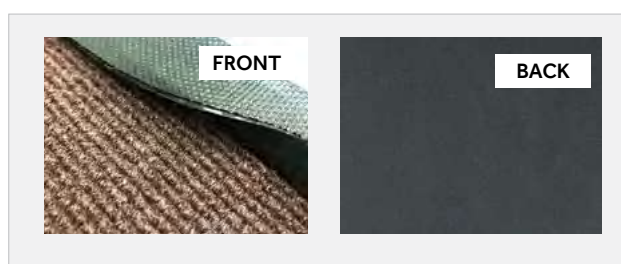


Features :

- Clean the shoes with Sanitizing Footbath
- Scratch resistant
- No PVC

Applications :

- Entrance door
- Screening point



PRODUCT DATA :

Size (finished):	50 x 80 cm	80 x 90 cm
Sanitizing footbath (W x H x D)	40 x 71 x 0.4 cm	71 x 79 x 0.4 cm
Border width	6.5 +/- 0.5 cm	6.5 +/- 0.5 cm
Absorbent pad	39 x 69 cm	69 x 78 cm
Capacity of Sanitizing Footbath:	Approx. 0.5 Litre	Approx. 1 Litre
Total weight:	Approx. 1.85 kg/piece	Approx. 3.2 kg/piece
Total Height:	Approx. 5 mm	
Material of mats:	100% Nitrile rubber (NBR)	
Material of Absorbent pad (refill):	Needle Punch fabric	
Colour:		
Sanitizing footbath	Black	
Absorbent pad	Needle Punch - Brown	

Recommendations

- Clean and dry the floor before placing Kleen-Sanitize Footbath for better stay still on the floor.
- Place absorbent pad into the tray by put the ribbed surface on top
- Fill in sanitizer in the footbath until absorbent pad is soak approximately 0.5 – 1 liter
- Refill sanitizer every 2- 3 hours and depended on traffic.
- Clean and dry the Kleen-Sanitize Footbath and absorbent pad everyday for hygiene and life extension
- If "Dettol" is applied, white stain may occur on the rubber. Do not use sanitizer contain Sodium Hypochlorite (e.g. Haiter).
- Keep the floor and surrounding area dry while using to prevent slipping



Surface Flammability:	passed ASTM D 2859 (> 1 inch)
High-Traction:	passed NFSI 101-C (Slip and Trip resistance on clean and dry floor)

Kleen-Sanitize I



Shoes sanitize & dust trap floor mat

Kleen-Sanitize is 2 in 1 model combination of sterilization tray and nylon mat in one piece. Suitable for hygiene, safety and cleaning at the same time before entry building. The new version is better lock the absorbent pad to stay still in the bath.





Features :

- 2 in 1 property
 - Step 1: Clean the shoes with Sanitizing Footbath
 - Step 2: Dry and trap dust before entry
- Scratch resistant
- No PVC

Applications :

- Entrance door
- Screening point
- Hospital
- Hotel
- Restaurant
- Office building
- Convenient store
- Shops
- Clean Room
- Kitchen
- Laundry
- Spa

PRODUCT DATA :

	80x150 cm (S)	80x200 cm (M)	80x240 cm (L)
Material of mats :	- 100% Nitrile rubber (NBR), thickness 3.7 mm - 100% Solution dyed nylon		
Material of absorbent pad (refill) :	- type A: Needle punch fabric – PET & PP (thickness approx. 5 m)		
Size :			
Sanitizing footbath (W x H x D)	71 x 40 x 0.4 cm	71 x 80 x 0.4 cm	71 x 120 x 0.4 cm
Nylon fabric (W x H)	70 x 97 cm	70 x 106 cm	70 x 106 cm
Border (approx.)	5 cm	5 cm	5 cm
Absorbent pad (approx.)	39 x 69 cm	69 x 78 cm	69 x 118 cm
Capacity of Sanitizing Footbath :	approx. 0.5 L	approx. 1 L	approx. 1.5 L
Dust collecting :	approx. 1,400 g/sqm		
Moisture collecting :	approx. 2,200 g/sqm		
Total height :	approx. 13 mm		
Total weight :	approx. 5.5 kg / pc	approx. 7.5 kg / pc	approx. 9 kg / pc
Colour :			
Nylon fabric	Black Brown		
Absorbent pad	Needle punch – Brown		

Recommendations

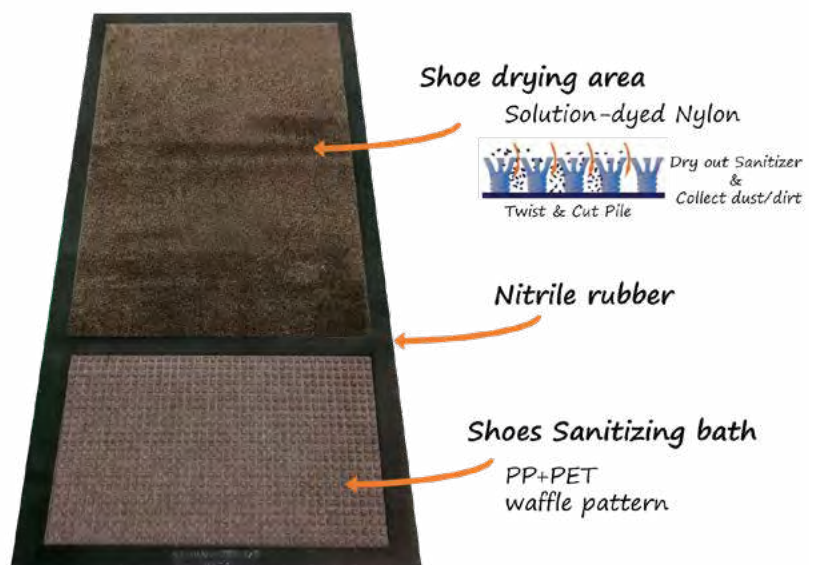
- Clean and dry the floor before placing Kleen-Sanitize mat for better stay stale on the floor.
- Fill in sanitizer in the footbath until absorbent pad is soaked approximately 0.3-0.8 liter
- For absorbent pad: needle punch (type A) place the ribbed surface on top.
- Refill sanitizer every 2- 3 hours and depended on traffic.
- Clean and dry the Kleen-Sanitize mat and absorbent pad everyday for hygiene and life extension
- If "Dettol" is applied, white stain may occur on the rubber. Do not use sanitizer contain Sodium Hypochlorite (e.g. Haiter).
- Keep the floor and surrounding area dry while using to prevent slipping

Colour Fastness to Light :	passed JIS L 0843 METHOD A
Colour Fastness to Washing & Laundering :	passed JIS L 0844 METHOD B-11
Surface Flammability :	passed ASTM D 2859 (> 1 inch)
High-Traction:	passed NFSI 101-C (Slip and Trip resistance on clean and dry floor)



*For all mats we reserve the right of production-related tolerance of +/- 5% in size. Colours are subject to commercial tolerance.

Kleen-Sanitize III



Shoes sanitizing mat for high traffic entrance

Kleen-Sanitize III is a model combination of emboss waffle pattern sterilizing tray and nylon mat in one piece. Suitable for heavy traffic area for hygiene, safety and cleaning control before entry building.



Features :

- 2 in 1 property
 - Step 1 : Clean the shoes with sanitizing footbath of emboss waffle design
 - Step 2 : Dry and trap dust before entry
- Scratch resistant
- No PVC

Applications :

- High traffic Entrance
- Screening point
- Hospital
- Hotel
- Restaurant
- Office building
- Convenient store
- Shops
- Clean Room
- Kitchen
- Laundry
- Spa

PRODUCT DATA :

	80x150 cm (S)	90x200 cm (M)	90x240 cm (L)	90x400 cm (XL)
Material of mats:	- 100% Nitrile rubber (NBR) - 100% Solution dyed nylon			
Material of footbath:	- 100% Polypropylene waffle pattern			
Size:				
Footbath (W x H x D)	39 x 68 x 0.5 cm	56 x 81 x 0.5 cm	81 x 109 x 0.5 cm	81 x 109 x 0.5 cm
Nylon fabric (W x H)	70 x 98 cm	79 x 130 cm	79 x 116 cm	79 x 275 cm
Border (approx.)	5 cm	5 cm	5 cm	5 cm
Capacity of Footbath (approx.):	1 L	1.8 L	3.5 L	3.5 L
Dust collecting:	Approx. 1,400 g/sq.m			
Moisture collecting:	Approx. 2,200 g/sq.m			
Total height:	Approx. 13 mm			
Total weight (approx.):	6.5 kg/pc	9.5 kg/pc	11.5 kg/pc	19 kg/pc

COLOR

Nylon fabric				
Sanitize area				

Recommendations

- Clean and dry the floor before placing Kleen-Sanitize mat for better stay stale on the floor.
- Fill in sanitizer in the footbath until absorbent is soaked
- Refill sanitizer every 2- 3 hours and depended on traffic.
- Clean and dry the Kleen-Sanitize mat every day for hygiene and life extension
- Do not recommend to use sanitizer contain Sodium Hypochlorite (e.g. Haiter) & Dettol Antiseptic Disinfectant liquid
- Keep the floor and surrounding area dry while using to prevent slipping

Colour Fastness to Light:	passed JIS L 0843 METHOD A
Colour Fastness to Washing & Laundering:	passed JIS L 0844 METHOD B-11
Surface Flammability:	passed ASTM D 2859 (> 1 inch)
High-Traction:	passed NFSI 101-C (Slip and Trip resistance on clean and dry floor)



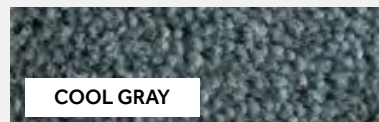
Water Cooler



A mat to fit round your water cooler and ensure that the area around the device stays dry and protects against potential spills and slip hazards.

Water Kooler

COLOURS :



Features :

- Extremely durable nylon surface with solid colour
- Slip-resistant rubber backing
- Protect water spill on floor and prevent falling.
- Light & colour resistant
- PVC-Free
- 2 years warranty

Applications :

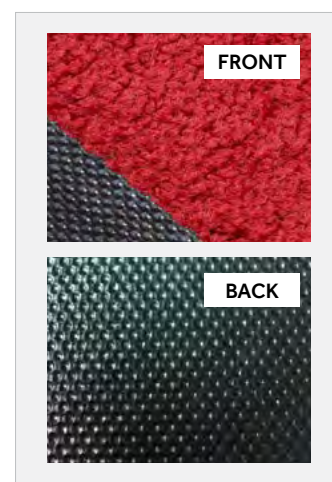
- Indoor placement
- Absorbs spills and moisture around water dispensers

MATERIALS :

- 100% solution dyed twist nylon surface
- 100% Nitrile rubber backing

STANDARD Sizes : (include 2 cm rubber border)

85 x 60 cm

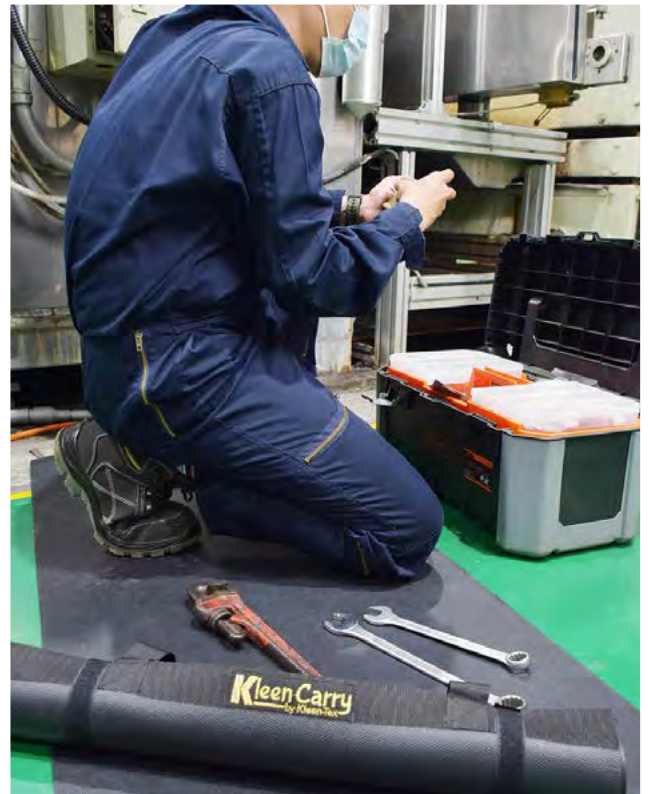


Total weight:	approx. 2.2 kg/sq.m
Total height:	approx. 7 mm
Dust collecting:	approx. 1,400 g/sq.m
Moisture collecting:	approx. 2,200 g/sq.m

Colour Fastness to Light:	passed JIS L 0843 METHOD A
Colour Fastness to Washing & Laundering:	passed JIS L 0844 METHOD B-11
Electrostatic Propensity of Carpets:	passed AATCC 134 (<3.5 kV)
Surface Flammability:	passed ASTM D 2859 (> 1 inch)
High-Traction:	passed NFSI 101-C (Slip and Trip resistance on clean and dry floor)



Kleen-Carry



Portable Rubber Work Mat for Professional Service

Protect floors and bench tops from accidental scratches, dents, burn marks and stains.

Kleen-Carry



Features :

- Floor & bench tops surface protection
- Knees support & protection
- Portable & Flexible rubber mat
- Reduce impact breakage risk
- Lay flat & Non-Slip mat

- Easy to carry & store with strapper and holder
- Durability
- No PVC
- Light-resistant

Applications :

- Placing service tools for plumber, mechanic, electrician etc.
- Automotive, motorcycle or vehicle service center
- Installation maintenance & services

- Garage
- Pit Stop racing



PRODUCT DATA :

size	40 x 120 cm	60 x 120 cm	80 x 120 cm
Approx. weight per piece	1.5 kg	2.2 kg	3 kg
Material	<ul style="list-style-type: none"> - Mat - 100% Nitrile rubber - Holder - Polypropylene 		
Thickness	2.5 mm.		
Colour	Black		

40 x 120 cm



60 x 120 cm



80 x 120 cm



Surface Flammability:	passed ASTM D 2859 (> 1 inch)
High-Traction:	passed NFSI 101-C (Slip and Trip resistance on clean and dry floor)
Antifungal Activity	passed AATCC TM 30 TEST III (Aspergillus niger) - No growth



*For all mats we reserve the right of production-related tolerance of +/- 5% in size. Colours are subject to commercial tolerance.

Production

Top Quality Mats made in Thailand



Quality, service and flexibility are our watchwords and we take enormous pride in our ability to deliver even the most complicated bespoke order quickly, efficiently and on time.

Our entire production process, from tufting to bonding, takes place at our manufacturing location in Sriracha, which means that we have full control over production schedules and can offer fast and accurate delivery timescales.

There are direct links between all our customer sales teams & Partners throughout Thailand & Asia and our production site, facilitating excellent communication and accurate delivery timescales.



Production

Top Quality Mats made in Thailand





Kleen-Tex (Thailand) Co.,Ltd
789/76 Moo 1, Pinthong Industrial Estate,
Nongkoh-Laemchabang Rd., Nongkham,
Sriracha, Chonburi 20230 Thailand
Tel.: +66-3-829-6891-3
info@kleen-tex.co.th | www.kleen-tex.co.th
www.kmatonline.com

