



make more
of your floor

COMMERCIAL PRODUCT GUIDE 2024

Standard Entrance Mats

Iron-Horse	10
Iron-Horse XL	11
Iron-Horse Light	12
Entrance	13
Super-Mat 2	14
Monotone	15
EcoAbsorb	16
PolyCotton	17
Green-Horse	18
Water-Horse	19
Kleen-Scrape	20

Custom Printed Mats

Jet-Print	24
Jet-Print Plus	25
Jet-Print Light	26
Jet-Print Horizon	27
Jet-Print Vision	28
Jet-Print Velour	29
Jet-Print Outdoor	30
Jet-Print Event	31
Jet-Print Patio	32
Jet-Print Big Size	33
Ad-Mat Premium	34
Bar-Mat Premium	35
Counter Mat	36
Desk Planner Mat	37
Keyboard Runner	38
Colour Palettes & Fabric Bases	39

Fitted Entrance Systems

Kleen-Fit Guard DC001	42
Kleen-Fit Guard DC003	43
Kleen-Fit Guard DC004	44
Kleen-Fit Guard DC005	45
Kleen-Fit Guard DC008	46
Kleen-Fit Guard DC022	47
Kleen-Fit Guard Eco	48
Kleen-Fit System	50
Kleen-Fit Concourse Tile	54
Kleen-Fit Matrix Tile	55

Anti-Fatigue Mats

Kleen-Comfort	58
Kleen-Comfort Safety	59
Kleen-Cushion	60
Kleen-Coil	61
Kleen-Thru Plus	62
Kleen-Scrape	63
Kleen-Foam	64
Kleen-Comfort Design	65
Kleen-Comfort Office	66
Kleen-Comfort Soft	67

Workplace Safety Mats

Kleen-Cable Mat	70
Kleen-Cable Mat Rubber	71
Kleen-Wheel Forklift Mat	72
Jet-Print Hi-Vis	73
Kleen-Sticky Mat	74
Kleen-Cooler Mat	75

Wet Area Mats

Kleen-Tile	78
Kleen-Wave	79

Transportation

Airline Mat	82
Car Protector Set Premium	83
Kleen-Cable Mat EV	84
Parking Mat	85
Technical Data	86
Our Sustainability Commitment	88
Our Production	89
Accessories	90

Key

Application Area



Suitable for outdoor use



Suitable for high foot traffic areas

Certifications



Compliant with fire protection classifications



Compliant with antistatic classification EN 14041



Anti-microbial properties as tested by AATCC TM 30, Part 111 test



Antibacterially treated

Product Benefits



Product has properties that reduce its impact on the environment



Guaranteed for specified number of years



Can be cut to custom shapes



Can be recycled



Highly absorbent surface



Can be designed with custom artwork



Colourfast and Lightfast properties



Suitable for underfloor heating



Made in Europe

Cleaning and Washability



Limited washability



Washable up to specified temperatures



Tumble dry on low/medium/high temperatures



Do not tumble dry



Lay flat to dry



Can be vacuum cleaned



Can be cleaned using high-pressure wash cleaning



Can be cleaned using steam or spray extraction methods



Can be cleaned with carpet cleaning machines

Affiliates and Accreditations

Kleen-TEX is a member of various laundry institutions and textile associations and is affiliated with multiple reputable promotional organisations.



HOHENSTEIN



Expertly manufacturing exceptional products

Make more of your floor

For over 55 years, Kleen-TEX has been at the forefront of manufacturing floor mats and matting solutions for commercial applications, setting the industry standard for quality and performance.

Our unwavering commitment to exceptional customer service has earned us a global reputation as one of the premier manufacturers operating across five continents.

With our extensive knowledge in textiles and design, floor care, pedestrian safety, entrance systems, and specialist floor mat solutions, we possess unparalleled expertise that enables us to offer an extensive range of mats suitable for any application. These mats not only serve a functional purpose but can also be utilised to promote and create personalised messages for customers and employees, fostering a unique and engaging experience.

Our strong manufacturing presence in Europe is a source of pride, with three operational locations in Austria, Poland, and the United Kingdom, providing unrivalled pan-European services and ensuring seamless delivery and support for our valued clients. With a legacy of excellence, Kleen-TEX continues to deliver innovative and durable matting solutions that surpass expectations, cementing our position as an industry leader.

At Kleen-TEX, we promise:



Over 55 years of experience



Excellent customer service and delivery



Certification and accreditation from world class institutes



European manufacturing



Continuous commitment to product innovation



Extensive bespoke design capabilities



Matting systems that deliver durability and longevity



Top quality launderable matting systems

Optimise Your Floors in 3 Simple Steps

The Ultimate Entrance System for your Building

Did you know that on average, 80% of dirt gets into a building through its main entrance.

By strategically installing mats at key locations throughout your building, you can significantly reduce the transfer of dirt and moisture, and as a result, dramatically reduce your cleaning costs.

No one wipes their feet when entering a commercial building so the more footsteps that land on mats, the more dirt is stopped at the door.

Over the last 50 years, we have developed and advocated a three-mat system to successfully entrap dirt and moisture before it enters your building.



~40%
of your cleaning budget is spent on floor maintenance

2kg
of soiling is carried in to your building per 1000 people entering every week

30
tonnes of dirt, soot, grit and grime enters London's buildings daily*

#1
cause of accidental slips and trips is tracked in dirt and moisture

94%
reduction in dirt and moisture ingress by using Dust Control Mats

≤90%
of soiling can be stopped with correctly sized and placed matting

Source: Camraso Statistics

The Intelligent Approach to Dirt Control

1

2

3

TERTIARY

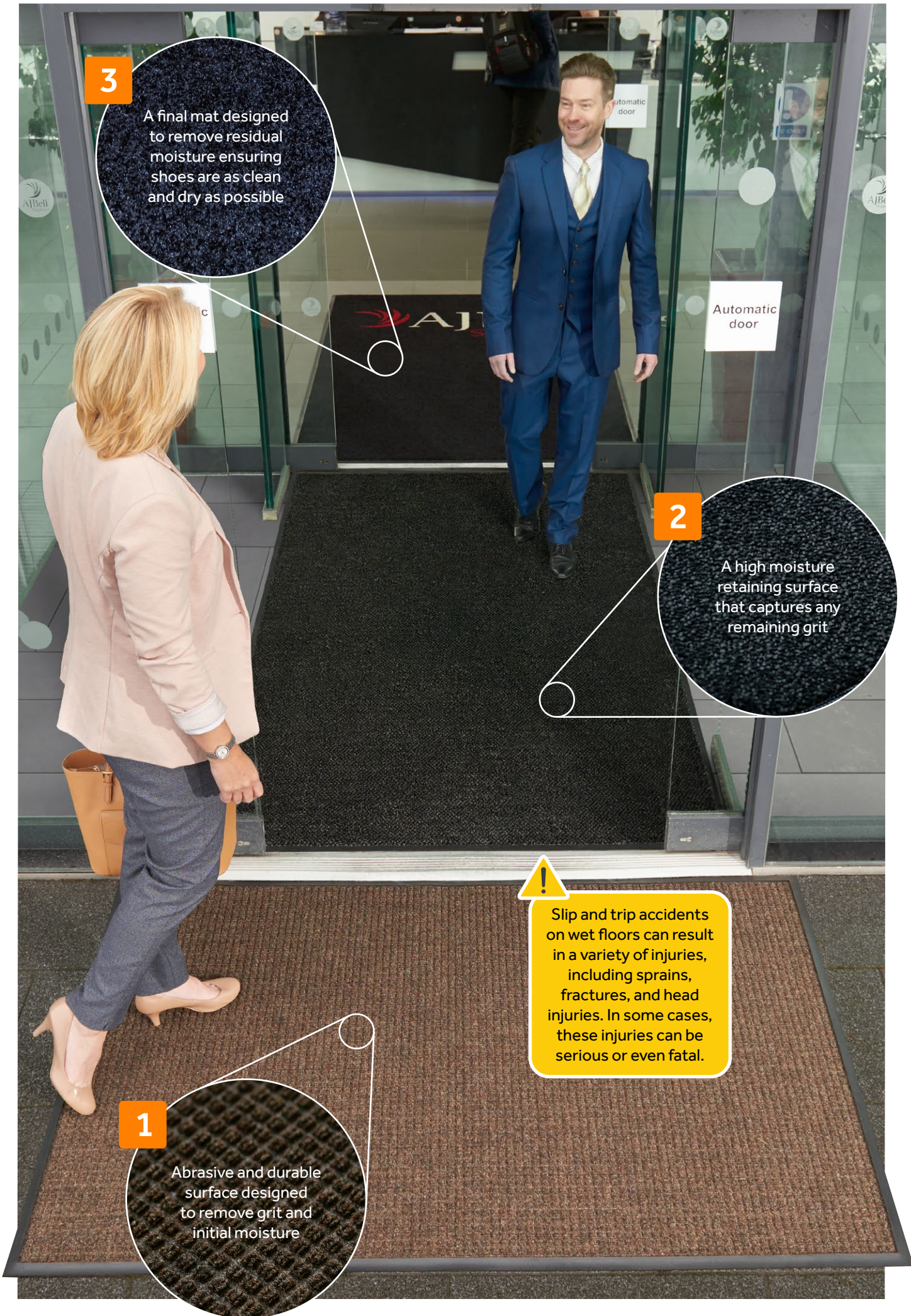
SECONDARY

PRIMARY

Primary Matting:
Removes coarse grit, heavy soil and some initial moisture, reducing dirt ingress and cutting cleaning costs.

Secondary Matting:
Absorbs some moisture and removes additional grit, protecting your staff and visitors.

Tertiary Matting:
Soaks up excess residue to ensure footwear is as clean and dry as possible before entering the main part of the building.



For Leisure and Hospitality

Mats are vital in the leisure and hospitality sector, serving various purposes from the classic entrance mats maintaining cleanliness and creating a positive first impression to specialist mats in various locations throughout the facility. Mats that provide comfort for employees standing for long periods, safety mats preventing accidents in areas like pools or fitness centers. Mats that maintain hygiene in food service areas. Functional mats that benefit your business, your staff and your guests.



For Warehousing and Manufacturing

Mats in the warehousing and manufacturing sector contribute to worker safety, comfort, and floor protection. They provide anti-fatigue support, prevent slips and falls, control static electricity, resist chemicals, and safeguard against heavy equipment and machinery. Using graphic mats we can also enforce safety messages where needed. All these mat types enhance productivity, reduce workplace injuries, and help maintain a clean and efficient working environment.



Standard Entrance Mats

An opportunity to make a great first impression

Monotone • Navy • 115 x 175cm

Make an Entrance

Kleen-Tex's indoor entrance mats are a high-quality and durable solution for keeping your indoor spaces clean and safe. These mats are designed to trap dirt, dust, and moisture from shoes, effectively reducing the amount of dirt and debris that is tracked into your building.

Made from top-grade materials, our indoor entrance mats are built to last and can withstand heavy foot traffic, making them ideal for use in high-traffic areas such as lobbies, hallways, and entrances.

With a wide range of colours, sizes, styles and materials to choose from, you're sure to find the perfect mat to suit your needs and complement your interior styling.

So, whether you're looking to improve the appearance of your building or keep it cleaner and safer, Kleen-Tex indoor entrance mats are a great solution.

Standard Entrance Mat Ranges

Indoor

Functional mats designed to serve as a barrier between the outdoors and the indoors, preventing dirt, dust, and moisture from being tracked inside, keeping floors clean and free from slips and trips.

Outdoor

Our Outdoor range features durable and hardwearing products capable of withstanding the varying and harsh weather conditions outdoor use can bring.

Eco

It's everybody's responsibility to do as much as possible to help save our planet and preserve the environment we live in for generations to come.

Our Eco range includes products made with sustainability in mind. These products will feature both a surface and backing material made from recycled content.

Indoor

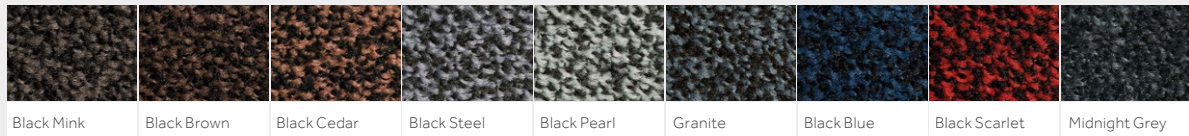
Iron-Horse



Professional, washable dirt catching mat for commercial use

Durability and a high capacity for dirt capture make this mat the perfect choice for highly frequented areas such as entrances, corridors, lift doors and reception desks. A wide colour choice will ensure a great match with your interiors.

Why Choose Iron-Horse?	Technical Details	Specification
<ul style="list-style-type: none">» Our best selling professional entrance mat» High dirt and moisture absorption» Fully serviceable product» Slip-resistant rubber backing» Lightfast and colour fade resistant» Suitable for underfloor heating» 5 years Manufacturers Guarantee*» Made in Europe	<p>Materials</p> <ul style="list-style-type: none">» 100% high-twist nylon» 100% nitrile rubber backing <p>Applications</p> <ul style="list-style-type: none">» Entrances » Corridors» Receptions » Elevators <p>Certifications</p> <ul style="list-style-type: none">» EN 13501-1 / CFL-s1 » NFSI High-Traction» EN 14041 Antistatic <p>Absorption:</p> <ul style="list-style-type: none">» Dirt absorption: 800 g/m²» Moisture absorption: 3-4 l/m²	<p>Height</p> <ul style="list-style-type: none">» Approx. 11-12 mm <p>Weight</p> <ul style="list-style-type: none">» 2.4 kg/m² <p>Standard Sizes</p> <ul style="list-style-type: none">» 60 x 85 cm» 85 x 120 cm» 85 x 150 cm» 85 x 300 cm» 115 x 175 cm» 150 x 240 cm <p>Widths</p> <ul style="list-style-type: none">» 85 cm» 115 cm» 150 cm» 200 cm** <p>Lengths</p> <ul style="list-style-type: none">» Up to 700 cm



Full Technical Data



Or turn to Page 86

Indoor

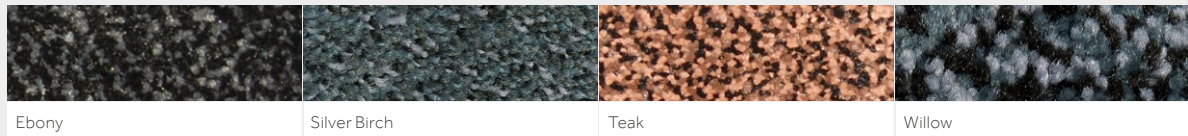
Iron-Horse XL



More pile for increased dirt and moisture trapping performance

With a higher pile than the classic Iron-Horse, this mat has an increased ability to trap dirt and moisture, delivering superior performance in areas of heavy traffic.

Why Choose Iron-Horse XL?	Technical Details	Specification
<ul style="list-style-type: none">» Extra luxurious professional entrance mat» Superior dirt and moisture absorption» Fully serviceable product» Slip-resistant rubber backing» Light-fast and colour fade resistant» Suitable for underfloor heating» 5 years Manufacturers Guarantee*» Made in Europe	<p>Materials</p> <ul style="list-style-type: none">» 100% high-twist nylon polyamide 6 surface» 100% nitrile rubber backing <p>Applications</p> <ul style="list-style-type: none">» Entrances » Corridors» Receptions » Elevators <p>Certifications</p> <ul style="list-style-type: none">» EN 13501-1 / CFL-s1 » NFSI High-Traction» EN 14041 Antistatic <p>Absorption:</p> <ul style="list-style-type: none">» Dirt absorption: 1000 g/m²» Moisture absorption: 4-5 l/m²	<p>Height</p> <ul style="list-style-type: none">» Approx. 13-14 mm <p>Weight</p> <ul style="list-style-type: none">» 2.54 kg/m² <p>Standard Sizes</p> <ul style="list-style-type: none">» 60 x 85 cm» 85 x 120 cm» 85 x 150 cm» 85 x 300 cm» 115 x 175 cm» 150 x 240 cm <p>Widths</p> <ul style="list-style-type: none">» 85 cm» 115 cm» 150 cm <p>Lengths</p> <ul style="list-style-type: none">» Up to 700 cm



Full Technical Data



Or turn to Page 86

Indoor

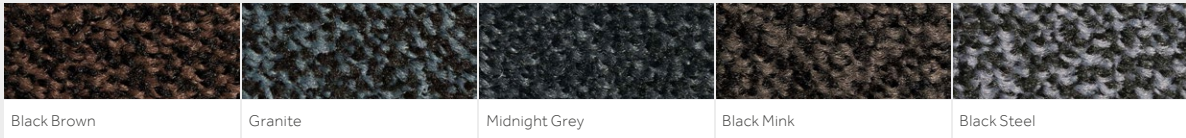
Iron-Horse Light

KLEEN-TEX COMMERCIAL PRODUCT GUIDE 2024 | STANDARD ENTRANCE MATS



Stop dirt and moisture being tracked into your building with cost effective professional mats
The perfect entrance mat for busy businesses and public buildings. Now available with a slimline backing to give you a more cost effective solution with all the benefits of our best-selling Iron-Horse.

Why Choose Iron-Horse Light?	Technical Details	Specification
<div>» Entry level professional entrance mat</div> <div>» High dirt and moisture absorption</div> <div>» Washable up to 40°C</div> <div>» Slip-resistant rubber backing</div> <div>» Lightfast and colour fade resistant</div> <div>» Suitable for underfloor heating</div> <div>» 2 years Manufacturers Guarantee</div> <div>» Made in Europe</div>	<div>Materials</div> <div>» 100% high-twist nylon polyamide 6 surface</div> <div>» 100% nitrile rubber backing</div> <div>Applications</div> <div>» Entrances» Corridors</div> <div>» Receptions» Elevators</div> <div>Absorption:</div> <div>» Dirt absorption: 800 g/m²</div> <div>» Moisture absorption: 3-4 l/m²</div>	<div>Height</div> <div>» Approx. 11-12 mm</div> <div>Weight</div> <div>» 1.8 kg/m²</div> <div>Standard Sizes</div> <div>» 60 x 85 cm</div> <div>» 85 x 120 cm</div> <div>» 85 x 150 cm</div> <div>» 115 x 175 cm</div>



Full Technical Data



Or turn to Page 86

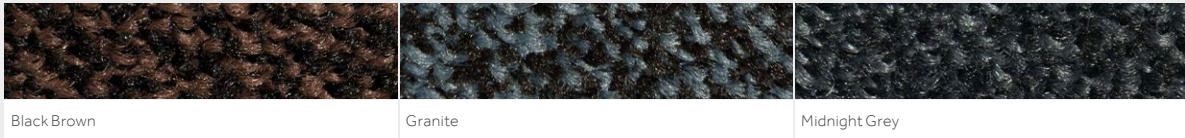
Indoor

Entrance



Reduces dirt and moisture entering your busy premises!
An extremely durable nylon mat for optimal dirt absorption in highly frequented areas. Entrance mats are perfectly suited for the busiest areas due to their high dirt absorption rate and slip-resistant rubber backing.

Why Choose Entrance?	Technical Details	Specification
<div>» High dirt and moisture absorption</div> <div>» Durable nylon surface</div> <div>» Made with recycled rubber content</div> <div>» Slip-resistant rubber backing</div> <div>» Lightfast and colour fade resistant</div> <div>» Suitable for underfloor heating</div> <div>» 2 years Manufacturers Guarantee</div> <div>» Made in Europe</div>	<div>Materials</div> <div>» 100% high-twist nylon polyamide 6 surface</div> <div>» 100% nitrile rubber backing (15% recycled rubber content)</div> <div>Applications</div> <div>» Entrances» Corridors</div> <div>» Receptions» Elevators</div> <div>Certifications</div> <div>» EN 13501-1 / CFL-s1</div> <div>» NFSI High-Traction</div> <div>Absorption:</div> <div>» Dirt absorption: 800 g/m²</div> <div>» Moisture absorption: 3-4 l/m²</div>	<div>Height</div> <div>» Approx. 11-12 mm</div> <div>Weight</div> <div>» 2.2 kg/m²</div> <div>Standard Sizes</div> <div>» 60 x 85 cm</div> <div>» 85 x 150 cm</div> <div>» 115 x 175 cm</div>



Full Technical Data



Super-Mat 2

KLEEN-TEX COMMERCIAL PRODUCT GUIDE 2024 | STANDARD ENTRANCE MATS



Dual performance; scrape and wipe - a heavy duty mat to keep your buildings even cleaner
The ultimate choice for busy areas where dirt ingress is high. This dirt-catching mat has a unique double feature; heavy-duty monofilament fibres remove coarse dirt whilst the high-twist, fine, heat-set fibres, absorb and keep fine dust, dirt and moisture in the mat.

Why Choose Super-Mat 2?	Technical Details	Specification																					
<ul style="list-style-type: none">» Dual performance; scrape and wipe» Made from Econyl® regenerated nylon» Fully serviceable product» Slip-resistant rubber backing» Light-fast and colour fade resistant» Suitable for underfloor heating» 5 years Manufacturers Guarantee*» Made in Europe	<p>Materials</p> <ul style="list-style-type: none">» 100 % regenerated Econyl® nylon surface» 100% nitrile rubber backing <p>Applications</p> <ul style="list-style-type: none">» Entrances» Receptions» Corridors» Elevators <p>Certifications</p> <ul style="list-style-type: none">» EN 13501-1 / CFL-s1» EN 14041 Antistatic» NFSI High-Traction <p>Absorption:</p> <ul style="list-style-type: none">» Dirt absorption: 950 g/m²» Moisture absorption: 3-4 l/m²	<p>Height</p> <ul style="list-style-type: none">» Approx. 10 mm <p>Weight</p> <ul style="list-style-type: none">» 3.1 kg/m² <table><tr><th>Standard Sizes</th><th>Widths</th><th>Lengths</th></tr><tr><td>» 60 x 85 cm</td><td>» 85 cm</td><td>» Up to 700 cm</td></tr><tr><td>» 85 x 120 cm</td><td>» 115 cm</td><td></td></tr><tr><td>» 85 x 150 cm</td><td>» 150 cm</td><td></td></tr><tr><td>» 85 x 300 cm</td><td></td><td></td></tr><tr><td>» 115 x 175 cm</td><td></td><td></td></tr><tr><td>» 150 x 240 cm</td><td></td><td></td></tr></table>	Standard Sizes	Widths	Lengths	» 60 x 85 cm	» 85 cm	» Up to 700 cm	» 85 x 120 cm	» 115 cm		» 85 x 150 cm	» 150 cm		» 85 x 300 cm			» 115 x 175 cm			» 150 x 240 cm		
Standard Sizes	Widths	Lengths																					
» 60 x 85 cm	» 85 cm	» Up to 700 cm																					
» 85 x 120 cm	» 115 cm																						
» 85 x 150 cm	» 150 cm																						
» 85 x 300 cm																							
» 115 x 175 cm																							
» 150 x 240 cm																							



Black Lava Heather Grey

Full Technical Data



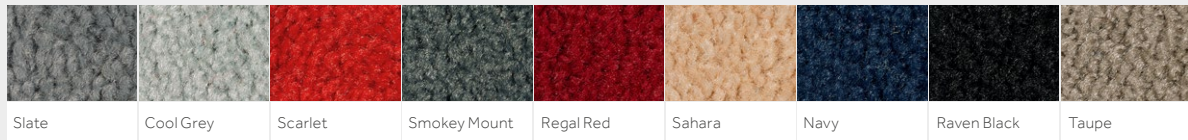
Or turn to Page 86

Monotone



Professional functional mats in a pure vibrant colour
Developed to stand up to the toughest demands in foot traffic whilst maintaining a bright and vibrant colour. The surface texture removes dirt and moisture from passing shoes and retains it between the fibres.

Why Choose Monotone?	Technical Details	Specification																					
<ul style="list-style-type: none">» Contemporary colour selection» High dirt and moisture absorption» Fully serviceable product» Slip-resistant rubber backing» Lightfast and colour fade resistant» Suitable for underfloor heating» 5 years Manufacturers Guarantee*» Made in Europe	<p>Materials</p> <ul style="list-style-type: none">» 100% high-twist nylon polyamide 6 surface» 100% nitrile rubber backing (15% recycled rubber content) <p>Applications</p> <ul style="list-style-type: none">» Entrances» Receptions» Corridors» Elevators <p>Certifications</p> <ul style="list-style-type: none">» EN 13501-1 / CFL-s1» NFSI High-Traction <p>Absorption:</p> <ul style="list-style-type: none">» Dirt absorption: 800 g/m²» Moisture absorption: 3-4 l/m²	<p>Height</p> <ul style="list-style-type: none">» Approx. 11-12 mm <p>Weight</p> <ul style="list-style-type: none">» 2.4 kg/m² <table><tr><th>Standard Sizes</th><th>Widths</th><th>Lengths</th></tr><tr><td>» 60 x 85 cm</td><td>» 85 cm</td><td>» Up to 700 cm</td></tr><tr><td>» 85 x 120 cm</td><td>» 115 cm</td><td></td></tr><tr><td>» 85 x 150 cm</td><td>» 150 cm</td><td></td></tr><tr><td>» 85 x 300 cm</td><td></td><td></td></tr><tr><td>» 115 x 175 cm</td><td></td><td></td></tr><tr><td>» 150 x 240 cm</td><td></td><td></td></tr></table>	Standard Sizes	Widths	Lengths	» 60 x 85 cm	» 85 cm	» Up to 700 cm	» 85 x 120 cm	» 115 cm		» 85 x 150 cm	» 150 cm		» 85 x 300 cm			» 115 x 175 cm			» 150 x 240 cm		
Standard Sizes	Widths	Lengths																					
» 60 x 85 cm	» 85 cm	» Up to 700 cm																					
» 85 x 120 cm	» 115 cm																						
» 85 x 150 cm	» 150 cm																						
» 85 x 300 cm																							
» 115 x 175 cm																							
» 150 x 240 cm																							



Slate Cool Grey Scarlet Smokey Mount Regal Red Sahara Navy Raven Black Taupe

Full Technical Data



Or turn to Page 86

EcoAbsorb

KLEEN-TEX COMMERCIAL PRODUCT GUIDE 2024 | STANDARD ENTRANCE MATS



Super absorbent, quick drying and highly durable, eco-friendly entrance mat
A professional, functional entrance mat engineered to reduce it's impact on the environment. Using Renycle™ 50 yarn, production of EcoAbsorb saves energy, reduces CO₂ emissions, water consumption and waste material, compared to traditional cotton mats.

Why Choose EcoAbsorb?	Technical Details	Specification		
» Unparalleled drying capability » Dries 37% faster than a cotton mat » Highly resilient and durable pile » Made from Renycle® 50% recycled nylon » 45% less energy used in production » Machine washable up to 60°C » 5 years Manufacturers Guarantee* » Made in Europe	Materials » A combination of Micro Nylon and High-Twist Nylon (HTN) Polyamide 50% recycled yarn » 100% nitrile rubber backing	Height » Approx. 15 mm	Weight » 2.85 kg/m²	
	Applications » Entrances » Receptions	» Corridors » Elevators		
	Certifications » EN 13501-1 / CFL-s1	» EN 14041 Antistatic		
	Absorption: » Dirt absorption: » Moisture absorption:	1100 g/m² 5-6 l/m²		
		Standard Sizes » 60 x 85 cm » 85 x 120 cm » 85 x 150 cm » 85 x 300 cm » 115 x 175 cm » 150 x 240 cm	Widths » 85 cm » 115 cm » 150 cm » 200 cm	Lengths » Up to 700 cm
		Full Technical Data		



Mineral Grey

Full Technical Data



Or turn to Page 86

PolyCotton



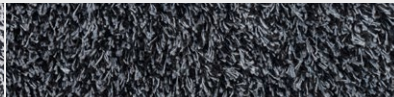
Ultra absorbent 50% cotton, 50% polyester washable floor mats
An ideal barrier against moisture. Rich cotton fibres absorb moisture and strong polyester fibres hold and hide the dirt until the mat can be cleaned. Perfect for the busy entrance area and a great solution where dirt is often walked into buildings.

Why Choose PolyCotton?	Technical Details	Specification		
» Extremely high water absorbency » Dual fibre pile for improved performance » Fully serviceable product » Slip-resistant rubber backing » Light and colour resistant » Suitable for underfloor heating » 5 years Manufacturers Guarantee* » Made in Europe	Materials » 50% cotton / 50% polyester » 100 % nitrile rubber backing	Height » Approx. 13 mm	Weight » 2.8 kg/m²	
	Applications » Entrances » Receptions	» Corridors » Elevators	Standard Sizes » 60 x 85 cm » 85 x 120 cm » 85 x 150 cm » 85 x 300 cm » 115 x 175 cm » 150 x 240 cm	Widths » 85 cm » 115 cm » 150 cm
	Certifications » EN 13501-1 / EFL-s1			Lengths » Up to 700 cm
	Absorption: » Dirt absorption: 800 g/m² » Moisture absorption: 4-5 l/m²			

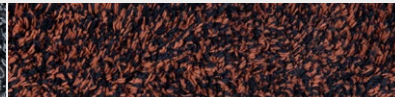
Full Technical Data



Black White



Black Grey



Black Brown

Full Technical Data



Or turn to Page 86

Indoor | Eco

Green-Horse



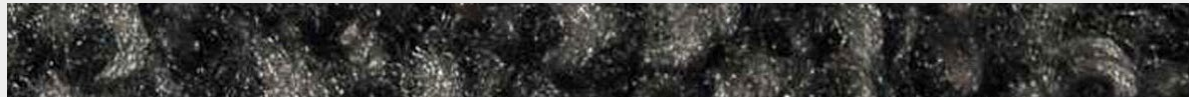
KLEEN-TEX COMMERCIAL PRODUCT GUIDE 2024 | STANDARD ENTRANCE MATS



The green choice: made from recycled PET plastics, a sustainable and durable mat

This is the environmentally friendly choice for keeping buildings clean. With a pile made from recycled PET bottles and PVC free, the Green-Horse mat has great dirt capture properties, fast drying times and a higher heat resistance.

Why Choose Green-Horse?	Technical Details	Specification
<ul style="list-style-type: none">» Pile made from 100% recycled PET material» Fast drying time» Fully serviceable product» Slip-resistant rubber backing» Light-fast and colour fade resistant» Suitable for underfloor heating» 5 years Manufacturers Guarantee*» Made in Europe	Materials <ul style="list-style-type: none">» 100% recyclable PET plastic» 100% nitrile rubber backing	Height <ul style="list-style-type: none">» Approx. 10-11 mm Weight <ul style="list-style-type: none">» 2.65 kg/m²
	Applications <ul style="list-style-type: none">» Entrances<ul style="list-style-type: none">» Corridors» Elevators» Receptions	Standard Sizes <ul style="list-style-type: none">» 60 x 85 cm» 85 x 120 cm» 85 x 150 cm» 85 x 300 cm» 115 x 175 cm» 150 x 240 cm Widths <ul style="list-style-type: none">» 85 cm» 115 cm» 150 cm Lengths <ul style="list-style-type: none">» Up to 700 cm
	Certifications <ul style="list-style-type: none">» EN 13501-1 / CFL-s1» EN 14041 Antistatic» NFSI High-Traction	
	Absorption: <ul style="list-style-type: none">» Dirt absorption: 800 g/m²» Moisture absorption: 3-4 l/m²	



Smokey Black

Full Technical Data



Or turn to Page 86

Outdoor | Eco

Water-Horse



Amazing water retention capacity from this high-profile rubber edged mat

This mat comes with a containment border capable of holding up to 4.5 litres of water per square metre. With a water dam rubber border to aid water retention, the Water-Horse is designed to remove dirt, grit and water from footwear and guarantees slip resistance.

Why Choose Water-Horse?	Technical Details	Specification
<ul style="list-style-type: none">» Enormous water retention capacity» Extremely durable polypropylene surface» Embossed waffle design» Made with recycled materials» Slip-resistant rubber backing» High profile rubber edge aiding water retention» 5 years Manufacturers Guarantee» Made in Europe	Materials <ul style="list-style-type: none">» 50% polyester and 50% polypropylene surface (50% recycled content)» Embossed nitrile rubber core and backing (15% recycled rubber content)	Height <ul style="list-style-type: none">» Approx. 7 mm Weight <ul style="list-style-type: none">» 3.2 kg/m²
	Applications <ul style="list-style-type: none">» Entrances» Suitable for Outdoor Use	Standard Sizes <ul style="list-style-type: none">» 60 x 90 cm» 85 x 120 cm» 85 x 150 cm» 115 x 175 cm» 115 x 240 cm
	Certifications <ul style="list-style-type: none">» EN 13501-1 / EFL-s1» NFSI High-Traction	
	Absorption: <ul style="list-style-type: none">» Dirt absorption: 1000 g/m²» Moisture absorption: 4-5 l/m²	



Black



Brown

Full Technical Data



For all mats we reserve the right of production-related tolerance of +/- 3% in size. Colours are subject to commercial tolerance.

Outdoor

Kleen-Scrape

KLEEN-TEX COMMERCIAL PRODUCT GUIDE 2024 | STANDARD ENTRANCE MATS



Hard wearing, 100% rubber, multi-purpose mat

An all purpose, hard-wearing rubber mat that's oil, fat, chemical, solvent, heat and cold resistant, and can be used anywhere that needs a strong scraper profile whilst having a castellated pattern that offers anti-fatigue properties.

Why Choose Kleen-Scrape?	Technical Details	Specification
<ul style="list-style-type: none">» 100% nitrile rubber mat» Suitable for use indoors or outdoors» Slip resistant rubber even when wet» Oil and chemical resistant» Anti-fatigue properties» 5 years Manufacturers Guarantee*» Made in Europe	<p>Materials</p> <ul style="list-style-type: none">» 100% nitrile rubber (15% recycled rubber content) <p>Applications</p> <ul style="list-style-type: none">» Entrances» Production Lines» Prolonged standing work positions» Workstations <p>Certifications</p> <ul style="list-style-type: none">» EN 13501-1 / EFL-s1» EN 14041 Antistatic» NFSI High-Traction	<p>Height</p> <ul style="list-style-type: none">» Approx. 5.5 mm <p>Weight</p> <ul style="list-style-type: none">» 4.2 kg/m² <p>Standard Sizes</p> <p>Ribbed Pattern</p> <ul style="list-style-type: none">» 75 x 85 cm» 85 x 150 cm» 85 x 300 cm» 115 x 175 cm <p>Chequerboard Pattern</p> <ul style="list-style-type: none">» 75 x 85 cm» 85 x 150 cm» 115 x 175 cm



Ribbed



Chequerboard

Full Technical Data



Or turn to Page 86

Customer Testimonials

Highly Recommended

"FC United of Manchester are delighted with the mats supplied by Kleen-Tex. The mats are very bright and visual and have created a warm and welcoming environment as soon as you step inside Broadhurst Park Stadium.

We have received lots of feedback from our supporters and visitors coming to the stadium to ask if we can create smaller replica mats, we can sell in our club shop!

We would like to thank Kleen-Tex for supplying these stunning mats and would highly recommend to other businesses and venues."

F. Fielding
Commercial Manager, FC United of Manchester



Excellent Statement

"The Jet Print logo mats produced by Kleen-Tex are of the highest quality. The mats are durable, effective, and hard-wearing, whilst the graphics are sharp and vibrant, making an excellent statement for any business' public image."

J. Pritchard
Ginger Mats Limited



Highest Standard

"We have been working with Kleen-Tex for nearly 20 years and always found the quality of mats to be of the highest standard, matched only by their ever efficient service level".

L. Brownless
Absolute Hygiene Solutions



*2 year guarantee under industrial laundry conditions.
For all mats we reserve the right of production-related tolerance of +/- 3% in size. Colours are subject to commercial tolerance.

Custom Printed Mats

Tap into the commercial power of your under-used surfaces

Jet-Print Outdoor



Make a Statement

With Kleen-Tex's custom printed mats, you have the opportunity to transform empty spaces into a dynamic and effective marketing tool. Not only do our products offer effective protection against dirt, dust, and moisture, but they also serve as a powerful platform for conveying important messages to your customers, harnessing untapped potential.

When someone enters a room or building, their eyes instinctively look down to assess the safety of

their surroundings. This means that with a custom printed mat, you can reach up to 99% of people who enter your premises with a memorable and impactful message. Whether it's promoting your brand, showcasing special offers, or warning of potential hazards, the possibilities are endless.

With Kleen-Tex's state-of-the-art printing technologies and exceptional colour reproduction, you can be sure that your custom printed mat will be eye-catching, innovative and effective.

Custom Printed Ranges

Indoor

Bold and vibrant mats that can be personalised with your unique artwork or message to add a touch of individuality to your entrance.

Large Area

Versatile mats specifically designed for large-scale advertising. Durable with a clear print quality, Large Area mats are suitable for exhibition booths, events or promotion.

Outdoor

Tough and lasting floor coverings specifically designed to be located where the outdoor elements can degrade lower quality products.

Work Surface

For the highest quality printed image on a functional advertising mat, our Work Surface range offer pin-sharp clarity with no compromise.

Indoor

Jet-Print

KLEEN-TEX COMMERCIAL PRODUCT GUIDE 2024 | CUSTOM PRINTED MATS



State-of-the-art Jet-Print technology for a great first impression!
Vivid, bright coloured logos and graphics make Jet-Print an excellent eye-catcher, great for promotional use and placement at the point of purchase. It also performs perfectly as a dust control mat making it ideal for business entrances and reception areas.

Why Choose Jet-Print?	Technical Details	Specification			
<ul style="list-style-type: none">» Fully customisable with your own designs» High dirt and moisture absorption» Durable nylon surface» Pantone, HKS and RAL matching available*» Custom shapes available*» Slip-resistant rubber backing» Light-fast and colour fade resistant» 5 years Manufacturers Guarantee**» Made in Europe	Materials <ul style="list-style-type: none">» 100% high-twist nylon polyamide 6.6 surface» 100% nitrile rubber backing	Height <ul style="list-style-type: none">» Approx. 9 mm	Weight <ul style="list-style-type: none">» 2.48 kg/m²		
	Applications <ul style="list-style-type: none">» Entrances» Advertisement» Point of Sale» Corporate identity	Standard Sizes <ul style="list-style-type: none">» 60 x 85 cm» 85 x 120 cm» 85 x 150 cm» 85 x 300 cm» 115 x 175 cm» 150 x 240 cm	Widths <ul style="list-style-type: none">» 60 cm» 75 cm» 85 cm» 115 cm» 150 cm» 200 cm	Lengths <ul style="list-style-type: none">» Up to 700 cm	
	Certifications <ul style="list-style-type: none">» EN 13501-1 / CFL-s1» EN 14041 Antistatic» NFSI High-Traction				
	Colour <ul style="list-style-type: none">» See page 39 for Jet-Print palette details				
	Full Technical Data				



Or turn to Page 86

*Available for an additional surcharge **2 year guarantee under industrial laundry conditions. For all mats we reserve the right of production-related tolerance of +/- 3% in size. Colours are subject to commercial tolerance.

Indoor

Jet-Print Plus



Feel the difference, custom printed mats with a deeper pile for that extra luxurious finishing touch
You can now get our famous custom designed Jet-Print mats with the added bonus of a rich, deeper pile surface. Impress your guests with a luxurious entrance mat where you can actually feel the difference under foot.

Why Choose Jet-Print Plus?	Technical Details	Specification			
<ul style="list-style-type: none">» Plush and durable nylon surface» Superior dirt and moisture absorption» Fully customisable with your own designs» Pantone, HKS and RAL matching available*» Custom shapes available*» Slip-resistant rubber backing» Light-fast and colour fade resistant» 5 years Manufacturers Guarantee**» Made in Europe	Materials <ul style="list-style-type: none">» 100% high-twist nylon polyamide 6.6 surface» 100% nitrile rubber backing	Height <ul style="list-style-type: none">» Approx. 10 mm	Weight <ul style="list-style-type: none">» 2.75 kg/m²		
	Applications <ul style="list-style-type: none">» Entrances» Advertisement» Point of Sale» Corporate Identity	Standard Sizes <ul style="list-style-type: none">» 60 x 85 cm» 85 x 120 cm» 85 x 150 cm» 85 x 300 cm» 115 x 175 cm» 150 x 240 cm	Widths <ul style="list-style-type: none">» 60 cm» 75 cm» 85 cm» 115 cm» 150 cm» 200 cm	Lengths <ul style="list-style-type: none">» Up to 700 cm	
	Certifications <ul style="list-style-type: none">» EN 13501-1 / CFL-s1» EN 14041 Antistatic» NFSI High-Traction				
	Colour <ul style="list-style-type: none">» See page 39 for Jet-Print palette details				
	Full Technical Data				



Or turn to Page 86

*Available for an additional surcharge **2 year guarantee under industrial laundry conditions. For all mats we reserve the right of production-related tolerance of +/- 3% in size. Colours are subject to commercial tolerance.

Indoor

Jet-Print Light



Create enchanting advertisements with these printed dirt catching mats

These mats are printed using exactly the same process as Jet-Print, but the pile and rubber have been slightly reduced to make the mat lighter to handle and more economical to purchase, whilst still offering great print quality.

Why Choose Jet-Print Light?	Technical Details	Specification
<div>» Entry level custom printed mat</div> <div>» High dirt and moisture absorption</div> <div>» Fully customisable with your own designs</div> <div>» Pantone, HKS and RAL matching available*</div> <div>» Custom shapes available*</div> <div>» Slip-resistant rubber backing</div> <div>» Light-fast and colour fade resistant</div> <div>» 2 years Manufacturers Guarantee</div> <div>» Made in Europe</div>	<div>Materials</div> <div>» 100% high-twist nylon polyamide 6.6 surface</div> <div>» 100% nitrile rubber backing</div> <div>Applications</div> <div>» Entrances » Events</div> <div>» Point of Sale » Advertisement</div> <div>» Corporate Identity</div> <div>Certifications</div> <div>» EN 13501-1 / CFL-s1 » OEKO-TEX Certified</div> <div>Colour</div> <div>» See page 39 for Jet-Print palette details</div>	<div>Height</div> <div>» Approx. 7 mm</div> <div>Weight</div> <div>» 1.9 kg/m²</div> <div>Standard Sizes</div> <div>» 60 x 85 cm</div> <div>» 85 x 120 cm</div> <div>» 85 x 150 cm</div> <div>» 85 x 300 cm</div> <div>» 115 x 175 cm</div> <div>» 150 x 240 cm</div> <div>Widths</div> <div>» 60 cm</div> <div>» 75 cm</div> <div>» 85 cm</div> <div>» 115 cm</div> <div>» 150 cm</div> <div>» 200 cm</div> <div>Lengths</div> <div>» Up to 700 cm</div>



Full Technical Data



Or turn to Page 86

Indoor | Large Area

Jet-Print Horizon



Make more of your corridors and large spaces

Turn your clients into stars with extra-long red carpets custom designed with your brand or promotional graphics. Runners up to 20m, and beyond when installed end to end. Providing many new creative possibilities for corridors, large spaces and entrances.

Why Choose Jet-Print Horizon?	Technical Details	Specification
<div>» Extra long runner mat</div> <div>» High dirt and moisture absorption</div> <div>» Plush and durable nylon surface</div> <div>» Fully customisable with your own designs</div> <div>» Heavyweight durable vinyl backing</div> <div>» Pantone, HKS and RAL matching available*</div> <div>» Light-fast and colour fade resistant</div> <div>» 2 year guarantee</div> <div>» Made in Europe</div>	<div>Materials</div> <div>» 100% high-twist nylon polyamide 6.6 surface</div> <div>» 100% vinyl backing</div> <div>Applications</div> <div>» Entrances » Events</div> <div>» Advertisement » Corporate Identity</div> <div>» Corridors</div> <div>Certifications</div> <div>» EN 13501-1 / BFL-s1</div> <div>Colour</div> <div>» See page 39 for Jet-Print palette details</div>	<div>Height</div> <div>» Approx. 10 mm</div> <div>Weight</div> <div>» 3.8 kg/m²</div> <div>Standard Widths</div> <div>» 100 cm including side borders</div> <div>» 160 cm including side borders</div> <div>» 200 cm including side borders</div> <div>Bespoke Length</div> <div>» Up to 2000 cm</div>



Full Technical Data

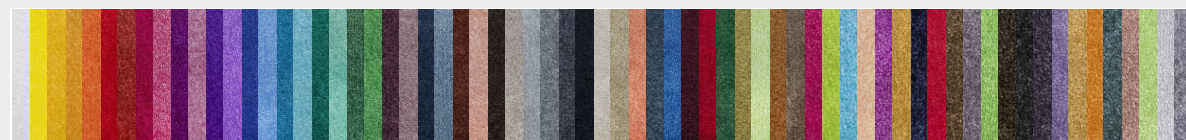


Or turn to Page 86



Visually this mat is hard to beat, the Jet-Print Vision offers a fine surface texture that is ideal for bespoke printing such as logos and designs with fine or intricate detail.

Why Choose Jet-Print Vision?	Technical Details	Specification																					
<ul style="list-style-type: none">» Excellent print clarity» Fully customisable with your own designs» Custom shapes available*» Slip-resistant rubber backing» Pantone, HKS and RAL matching available*» Light-fast and colour fade resistant» Suitable for underfloor heating» 5 years Manufacturers Guarantee**» Made in Europe	<p>Materials</p> <ul style="list-style-type: none">» 100% straight-set nylon polyamide 6.6 surface» 100% nitrile rubber backing <p>Applications</p> <ul style="list-style-type: none">» Events<ul style="list-style-type: none">» Point of Sale» Advertisement<ul style="list-style-type: none">» Corporate Identity <p>Certifications</p> <ul style="list-style-type: none">» EN 13501-1 / CFL-s1 <p>Colour</p> <ul style="list-style-type: none">» See page 39 for Jet-Print palette details	<p>Height</p> <ul style="list-style-type: none">» Approx. 7 mm <p>Weight</p> <ul style="list-style-type: none">» 2.5 kg/m² <table><tr><th>Standard Sizes</th><th>Widths</th><th>Lengths</th></tr><tr><td>» 60 x 85 cm</td><td>» 60 cm</td><td>» Up to 700 cm</td></tr><tr><td>» 85 x 120 cm</td><td>» 75 cm</td><td></td></tr><tr><td>» 85 x 150 cm</td><td>» 85 cm</td><td></td></tr><tr><td>» 85 x 300 cm</td><td>» 115 cm</td><td></td></tr><tr><td>» 115 x 175 cm</td><td>» 150 cm</td><td></td></tr><tr><td>» 150 x 240 cm</td><td>» 200 cm</td><td></td></tr></table>	Standard Sizes	Widths	Lengths	» 60 x 85 cm	» 60 cm	» Up to 700 cm	» 85 x 120 cm	» 75 cm		» 85 x 150 cm	» 85 cm		» 85 x 300 cm	» 115 cm		» 115 x 175 cm	» 150 cm		» 150 x 240 cm	» 200 cm	
Standard Sizes	Widths	Lengths																					
» 60 x 85 cm	» 60 cm	» Up to 700 cm																					
» 85 x 120 cm	» 75 cm																						
» 85 x 150 cm	» 85 cm																						
» 85 x 300 cm	» 115 cm																						
» 115 x 175 cm	» 150 cm																						
» 150 x 240 cm	» 200 cm																						
		Full Technical Data																					

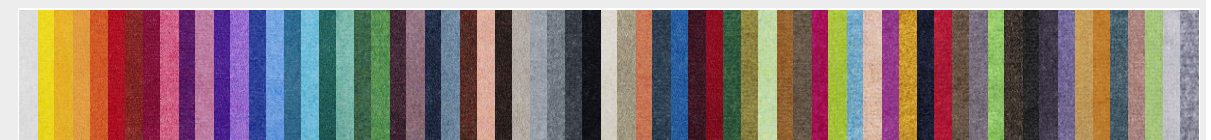


Or turn to Page 86



Due to the smooth and level velour material, this mat enables you to print in a precise and detailed manner with amazing colour quality. The Jet-Print Velour mat is perfect for creating effective, eye-catching presentations at promotional sales events and exhibitions.

Why Choose Jet-Print Velour?	Technical Details	Specification																					
<ul style="list-style-type: none">» Fine nylon velour surface» Excellent print clarity» Slip-resistant rubber backing» Fully customisable with your own designs» Pantone, HKS and RAL matching available*» Custom shapes available*» Light-fast and colour fade resistant» Suitable for underfloor heating» 2 years Manufacturers Guarantee» Made in Europe	<p>Materials</p> <ul style="list-style-type: none">» 100% polyamide 6 surface» 100% nitrile rubber backing <p>Applications</p> <ul style="list-style-type: none">» Events» Advertising» Corporate Identity <p>Colour</p> <ul style="list-style-type: none">» See page 39 for Jet-Print palette details	<p>Height</p> <ul style="list-style-type: none">» Approx. 6 mm <p>Weight</p> <ul style="list-style-type: none">» 1.7 kg/m² <table><tr><th>Standard Sizes</th><th>Widths</th><th>Lengths</th></tr><tr><td>» 60 x 85 cm</td><td>» 60 cm</td><td>» Up to 700 cm</td></tr><tr><td>» 85 x 120 cm</td><td>» 75 cm</td><td></td></tr><tr><td>» 85 x 150 cm</td><td>» 85 cm</td><td></td></tr><tr><td>» 85 x 300 cm</td><td>» 115 cm</td><td></td></tr><tr><td>» 115 x 175 cm</td><td>» 150 cm</td><td></td></tr><tr><td>» 150 x 240 cm</td><td>» 200 cm</td><td></td></tr></table>	Standard Sizes	Widths	Lengths	» 60 x 85 cm	» 60 cm	» Up to 700 cm	» 85 x 120 cm	» 75 cm		» 85 x 150 cm	» 85 cm		» 85 x 300 cm	» 115 cm		» 115 x 175 cm	» 150 cm		» 150 x 240 cm	» 200 cm	
Standard Sizes	Widths	Lengths																					
» 60 x 85 cm	» 60 cm	» Up to 700 cm																					
» 85 x 120 cm	» 75 cm																						
» 85 x 150 cm	» 85 cm																						
» 85 x 300 cm	» 115 cm																						
» 115 x 175 cm	» 150 cm																						
» 150 x 240 cm	» 200 cm																						



Or turn to Page 86

Jet-Print Outdoor



KLEEN-TEX COMMERCIAL PRODUCT GUIDE 2024 | CUSTOM PRINTED MATS



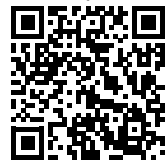
- 1
- 2
- 3

Position your logo, graphics or advertising message in the great outdoors
Practically everyone is familiar with the scratchy-fibre type of outdoor grass mats. Now they are no longer limited to green, as the innovative Jet-Print Outdoor allows you to step out into a world of full colour.

Why Choose Jet-Print Outdoor?	Technical Details	Specification
<ul style="list-style-type: none">» Specifically developed for outdoor use» Fully customisable with your own designs» Coarse scraping action» Durable nylon grass effect surface» Pantone, HKS and RAL matching available*» Custom shapes available*» Light-fast and colour fade resistant» 2 years Manufacturers Guarantee» Made in Europe	<p>Materials</p> <ul style="list-style-type: none">» 100% monofilament PA 6 surface» 100% nitrile rubber backing <p>Applications</p> <ul style="list-style-type: none">» Entrances» Advertisement» Suitable for Outdoor Use» Events» Corporate Identity <p>Certifications</p> <ul style="list-style-type: none">» EN 13501-1 / BFL-s1 <p>Colour</p> <ul style="list-style-type: none">» See page 39 for Jet-Print palette details	<p>Height</p> <ul style="list-style-type: none">» Approx. 8 mm <p>Weight</p> <ul style="list-style-type: none">» 3.6 kg/m² <p>Standard Widths</p> <ul style="list-style-type: none">» 50 cm» 85 cm» 115 cm» 150 cm» 200 cm <p>Lengths</p> <ul style="list-style-type: none">» Up to 700 cm



Full Technical Data



Or turn to Page 86

*Available for an additional surcharge
For all mats we reserve the right of production-related tolerance of +/- 3% in size. Colours are subject to commercial tolerance.

Jet-Print Event



- 1
- 2
- 3

Stand out from the crowd with superb graphic clarity
Stand out in the crowd with our unique "Signs on the floor", perfect for events and exhibitions. Our advanced printing ability allows for excellent image reproduction and superb graphic clarity.

Why Choose Jet-Print Event?	Technical Details	Specification
<ul style="list-style-type: none">» 100% velour and flexible latex combination» Excellent print clarity» Lightweight and versatile» Fully customisable with your own designs» Custom shapes available*» PVC-free» Made in Europe	<p>Materials</p> <ul style="list-style-type: none">» 100% polyamide 6 surface» 100% latex WV backing <p>Applications</p> <ul style="list-style-type: none">» Events» Corporate Identity» Advertisement <p>Colour</p> <ul style="list-style-type: none">» Available in RGB 1998 colour palette	<p>Height</p> <ul style="list-style-type: none">» Approx. 5 mm <p>Weight</p> <ul style="list-style-type: none">» 1.1 kg/m² <p>Standard Widths</p> <ul style="list-style-type: none">» Up to 200 cm <p>Lengths</p> <ul style="list-style-type: none">» Up to 2000 cm



Full Technical Data



Or turn to Page 86

*Available for an additional surcharge
For all mats we reserve the right of production-related tolerance of +/- 3% in size. Colours are subject to commercial tolerance.

Jet-Print Patio

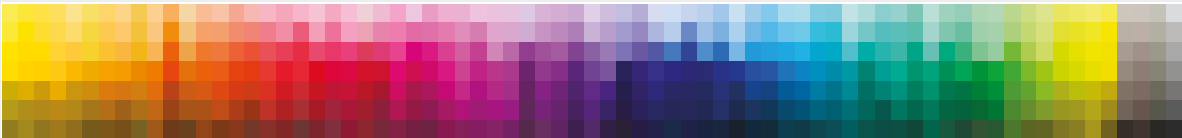


KLEEN-TEX COMMERCIAL PRODUCT GUIDE 2024 | CUSTOM PRINTED MATS



Surprise your customers and attract attention with this unique give-away
Jet-Print Patio is a very versatile product, whilst highly suited as a give-away item this mat can also be used to enhance corporate identity, attract attention at the point of sale and create eye-catching advertisements.

Why Choose Jet-Print Patio?	Technical Details	Specification
<ul style="list-style-type: none">» Affordable custom printed mat solution» Individual, photo-realistic print quality» Great promotional giveaway product» Spot-colours according to Pantone colours» Fully customisable with your own designs» Custom shapes available*» Made in Europe	Materials <ul style="list-style-type: none">» 100% polyamide 6 surface» 100% vinyl backing	Height <ul style="list-style-type: none">» Approx. 5 mm Weight <ul style="list-style-type: none">» 2.4 kg/m²
	Applications <ul style="list-style-type: none">» Events» Advertisement» Giveaways» Point of Sale» Corporate Identity	Standard Widths <ul style="list-style-type: none">» 39 cm» 45 cm» 58 cm» 70 cm» 78 cm» 100 cm» 200 cm Lengths <ul style="list-style-type: none">» Up to 2000 cm
	Certifications <ul style="list-style-type: none">» EN 13501-1 / CFL-s1	
	Colour <ul style="list-style-type: none">» Spot-colour selection according to Pantone» Photorealistic printing available	



Full Technical Data



Or turn to Page 86

*Available for an additional surcharge
For all mats we reserve the right of production-related tolerance of +/- 3% in size. Colours are subject to commercial tolerance.

Jet-Print Big Size



Draw attention to big area events whilst ensuring successful brand awareness
Jet-Print Big Size is the perfect solution for any company or brand which aims to increase awareness and recognition. Ideally suited for exhibition booths, events or promotion areas in shops or department stores.

Why Choose Jet-Print Big Size?	Technical Details	Specification
<ul style="list-style-type: none">» Huge printable area mat» Fully customisable with your own designs» Advanced nylon surface» Custom shapes available*» PVC-free» Made in Europe	Materials <ul style="list-style-type: none">» 100% polyamide 6 surface» Available with textile or easy lift backing	Height <ul style="list-style-type: none">» Approx. 6 mm Weight <ul style="list-style-type: none">» Textile backing: 1.65 kg/sqm» Easy Lift backing: 2.67 kg/sqm
	Applications <ul style="list-style-type: none">» Events» Advertisement» Point of Sale» Corporate Identity	Standard Widths <ul style="list-style-type: none">» Up to 400 cm Lengths <ul style="list-style-type: none">» Up to 4000 cm
	Certifications <ul style="list-style-type: none">» EN 13501-1 / CFL-s1	
	Colour <ul style="list-style-type: none">» Colour selection according to Pantone or RAL (max. 12 colours per design)	



Full Technical Data



Or turn to Page 86

*Available for an additional surcharge
For all mats we reserve the right of production-related tolerance of +/- 3% in size. Colours are subject to commercial tolerance.

Indoor

Ad-Mat Premium



Display your advertising message with photo-realistic precision at the point of purchase

The Ad-Mat is especially effective for increasing the level of attention or emotionally charging your message at the point of sale - perfect for promotions and events.

Why Choose Ad-Mat Premium?	Technical Details	Sizing
<div>» Floor level advertising</div> <div>» Point of sale and event opportunities</div> <div>» Photorealistic CMYK print clarity</div> <div>» Fully customisable with your own designs</div> <div>» Custom shapes available*</div> <div>» Machine washable up to 40°C</div> <div>» Slip-resistant rubber backing</div> <div>» 1 year Manufacturers Guarantee**</div> <div>» Made in Europe</div>	<div>Materials<div>» 100% knitted polyester surface</div><div>» 100% nitrile rubber backing</div></div> <div>Applications<div>» Events<div>» Point of Sale</div></div><div>» Advertisement<div>» Corporate Identity</div></div></div> <div>Colour<div>» Full colour CMYK sublimation print</div></div>	<div>0.9 mm Rubber Backing<div><div>Height</div><div>Weight</div><div>» Approx. 1.25 mm</div><div>» 1.25 kg/m²</div></div></div> <div>1.35 mm Rubber Backing<div><div>Height</div><div>Weight</div><div>» Approx. 1.70 mm</div><div>» 1.78 kg/m²</div></div></div> <div>Standard Sizes<div><div>» 40 x 60 cm</div><div>» 50 x 75 cm</div><div>» 60 x 85 cm</div><div>» 85 x 120 cm</div><div>» 85 x 150 cm</div><div>» 115 x 180 cm</div><div>» 115 x 200 cm</div><div>» 150 x 200 cm</div></div></div>
<div>Full Technical Data</div>		

Full Technical Data



Or turn to Page 86

Work Surface

Bar-Mat Premium



Deliver your message in the right place at the right time

This professional bar runner mat has the highest picture definition available on a functional mat. With full CMYK photo-real printing quality, brands, logos and marketing messages are displayed in all their intended glory with no compromise on clarity.

Why Choose Bar-Mat Premium?	Technical Details	Sizing								
<ul style="list-style-type: none">» Bar top advertising» Protects bar top and absorbs spills» Photorealistic CMYK print clarity» Fully customisable with your own designs» Custom shapes available*» Machine washable up to 40°C» Slip-resistant rubber backing» 1 year Manufacturers Guarantee**» Made in Europe	<p>Materials</p> <ul style="list-style-type: none">» 100% knitted polyester surface» 100% nitrile rubber backing <p>Applications</p> <ul style="list-style-type: none">» Events» Advertisement» Giveaways» Point of Sale» Corporate Identity» Merchandising <p>Colour</p> <ul style="list-style-type: none">» Full colour CMYK sublimation print	<p>0.9 mm Rubber Backing</p> <table><tr><th>Height</th><th>Weight</th></tr><tr><td>» Approx. 1.25 mm</td><td>» 1.25 kg/m²</td></tr></table> <p>1.35 mm Rubber Backing</p> <table><tr><th>Height</th><th>Weight</th></tr><tr><td>» Approx. 1.70 mm</td><td>» 1.78 kg/m²</td></tr></table> <p>Standard Sizes</p> <ul style="list-style-type: none">» 23 x 43 cm» 24 x 89 cm» 19 x 60 cm <p>Custom Sizes</p> <ul style="list-style-type: none">» On request	Height	Weight	» Approx. 1.25 mm	» 1.25 kg/m²	Height	Weight	» Approx. 1.70 mm	» 1.78 kg/m²
Height	Weight									
» Approx. 1.25 mm	» 1.25 kg/m²									
Height	Weight									
» Approx. 1.70 mm	» 1.78 kg/m²									

Full Technical Data

Full Technical Data



Or turn to Page 86

Work Surface

Counter Mat



Capture attention at the point of sale

Our Counter Mat is perfect for capturing the attention of customers or patrons right at the point of payment or customer service desk. With pin-sharp printing capabilities, you can use this mat to upsell a product or make customers aware of other services you may offer.

Why Choose Counter Mat?	Technical Details	Sizing
<ul style="list-style-type: none">» Counter top advertising» Point of purchase and upsell opportunities» Photorealistic CMYK print clarity» Fully customisable with your own designs» Custom shapes available*» Machine washable up to 40°C» Slip-resistant rubber backing» 1 year Manufacturers Guarantee**» Made in Europe	<p>Materials</p> <ul style="list-style-type: none">» 100% knitted polyester surface» 100% nitrile rubber backing <p>Applications</p> <ul style="list-style-type: none">» Events» Advertisement» Giveaways» Point of Sale» Corporate Identity <p>Colour</p> <ul style="list-style-type: none">» Full colour CMYK sublimation print	<p>0.9 mm Rubber Backing</p> <p>Height » Approx. 1.25 mm Weight » 1.25 kg/m²</p> <p>1.35 mm Rubber Backing</p> <p>Height » Approx. 1.70 mm Weight » 1.78 kg/m²</p> <p>Standard Sizes</p> <ul style="list-style-type: none">» 23 x 43 cm» 24 x 89 cm» 19 x 60 cm» 40 x 60 cm <p>Custom Sizes</p> <ul style="list-style-type: none">» On request

Full Technical Data



Or turn to Page 86

Work Surface

Desk Planner Mat



Get creative with desktop space

Slip-resistant nitrile rubber backing will minimise keyboard slip and our stay flat, slimline construction gives a low, non-intrusive profile. Our Desk Planner Mats are a great way to reinforce your brand whilst effectively helping the user plan their week.

Why Choose Desk Planner Mat?	Technical Details	Sizing
<ul style="list-style-type: none">» Great promotional giveaway product» Smooth and stable surface for mouse control» Photorealistic CMYK print clarity» Fully customisable with your own designs» Custom shapes available*» Machine washable up to 40°C» Slip-resistant rubber backing» 1 year Manufacturers Guarantee**» Made in Europe	<p>Materials</p> <ul style="list-style-type: none">» 100% knitted polyester surface» 100% nitrile rubber backing <p>Applications</p> <ul style="list-style-type: none">» Events» Advertisement» Giveaways» Point of Sale» Corporate Identity <p>Colour</p> <ul style="list-style-type: none">» Full colour CMYK sublimation print	<p>0.9 mm Rubber Backing</p> <p>Height » Approx. 1.25 mm Weight » 1.25 kg/m²</p> <p>1.35 mm Rubber Backing</p> <p>Height » Approx. 1.70 mm Weight » 1.78 kg/m²</p> <p>Standard Sizes</p> <ul style="list-style-type: none">» 23 x 43 cm» 19 x 60 cm» 24 x 89 cm» 40 x 60 cm <p>Custom Sizes</p> <ul style="list-style-type: none">» On request

Full Technical Data



Or turn to Page 86

Work Surface

Keyboard Runner



Bring your brand or product into focus
Featuring a clean, consistent surface for ease of use and a slip-resistant base for your mouse and keyboard. Our Keyboard Runners are a great way to improve a desktop setup for work or play.

Why Choose Keyboard Runner?	Technical Details	Sizing
<ul style="list-style-type: none">» Functional merchandise opportunities» Smooth and stable surface for mouse control» Photorealistic CMYK print clarity» Fully customisable with your own designs» Custom shapes available*» Machine washable up to 40°C» Slip-resistant rubber backing» 1 year Manufacturers Guarantee**» Made in Europe	<p>Materials</p> <ul style="list-style-type: none">» 100% knitted polyester surface» 100% nitrile rubber backing <p>Applications</p> <ul style="list-style-type: none">» Events» Advertisement» Giveaways» Point of Sale» Corporate Identity <p>Colour</p> <ul style="list-style-type: none">» Full colour CMYK sublimation print	<p>0.9 mm Rubber Backing</p> <p>Height » Approx. 1.25 mm Weight » 1.25 kg/m²</p> <p>1.35 mm Rubber Backing</p> <p>Height » Approx. 1.70 mm Weight » 1.78 kg/m²</p> <p>Standard Sizes</p> <ul style="list-style-type: none">» 23 x 43 cm» 19 x 60 cm» 24 x 89 cm» 40 x 60 cm <p>Custom Sizes</p> <ul style="list-style-type: none">» On request



Full Technical Data



Or turn to Page 86

Colour Palettes

Kleen-Tex's 66-colour Jet-Print palette offers an extensive range of vibrant and eye-catching hues allowing for unparalleled customisation and design possibilities. With an impressive selection of colours, ranging from subtle neutrals to bold and dynamic, we have every colour needed to reflect your vision. Our advanced Jet-Print technology ensures exceptional colour accuracy and sharpness, resulting in stunning floor coverings that are aesthetically pleasing whilst remaining durable and functional.

600	601	602	603	604	605	606	607	608	609
610	611	612	613	614	615	616	617	618	619
620	621	622	623	624	625	626	627	628	629
630	631	632	633	634	635	636	637	638	639
640	641	642	643	644	645	646	647	648	649
650	651	652	653	654	655	656	657	658	659
660	661	662	663	664	665	666			

Jet-Print Fabric Bases

Our Custom Printed products range features a variety of surface finishes which will accept colour slightly differently depending on the material. It's important to thoroughly check your colours before placing your order to ensure a strong contrast between different elements of your design. Additionally, if you're uncertain about how the colours will appear on the specific surface material, we advise that you check a physical sample. These can be ordered at any time from our Customer Service team.



Fitted Entrance Systems

High performance systems for commercial applications

Kleen-Fit Guard DC022 • Grey & Black

Elevate Your Entrance

Step into the world of premium entrance systems with Kleen-Tex. Our high-performance entrance systems are engineered to perfection and built to last, making them the ultimate solution for any high-traffic public entrance.

Whether it's tile systems or grid systems, we've got you covered with a variety of textures, colours, and solid rubber finishes to choose from. And the best part? All our systems can be customised to meet your specific needs and design requirements.

At Kleen-Tex, we're not just about creating durable and functional entrance systems, but also about making a positive impact on the environment. That's why we're dedicated to reducing plastic waste while helping professionals take their commercial projects to the next level of environmental efficiency.

So, whether you're looking to enhance the safety and durability of your public entrances or make a sustainable choice, look no further than Kleen-Tex.

Fitted Entrance Products

Grid System

Efficient entrance systems that consistently remove foot-borne dirt and moisture from high traffic areas whilst simultaneously providing the highest aesthetic standard.

Tile System

Easy to install and can be cut to any size, our tile systems are perfect for many commercial applications where dirt removal is a high priority.

Eco

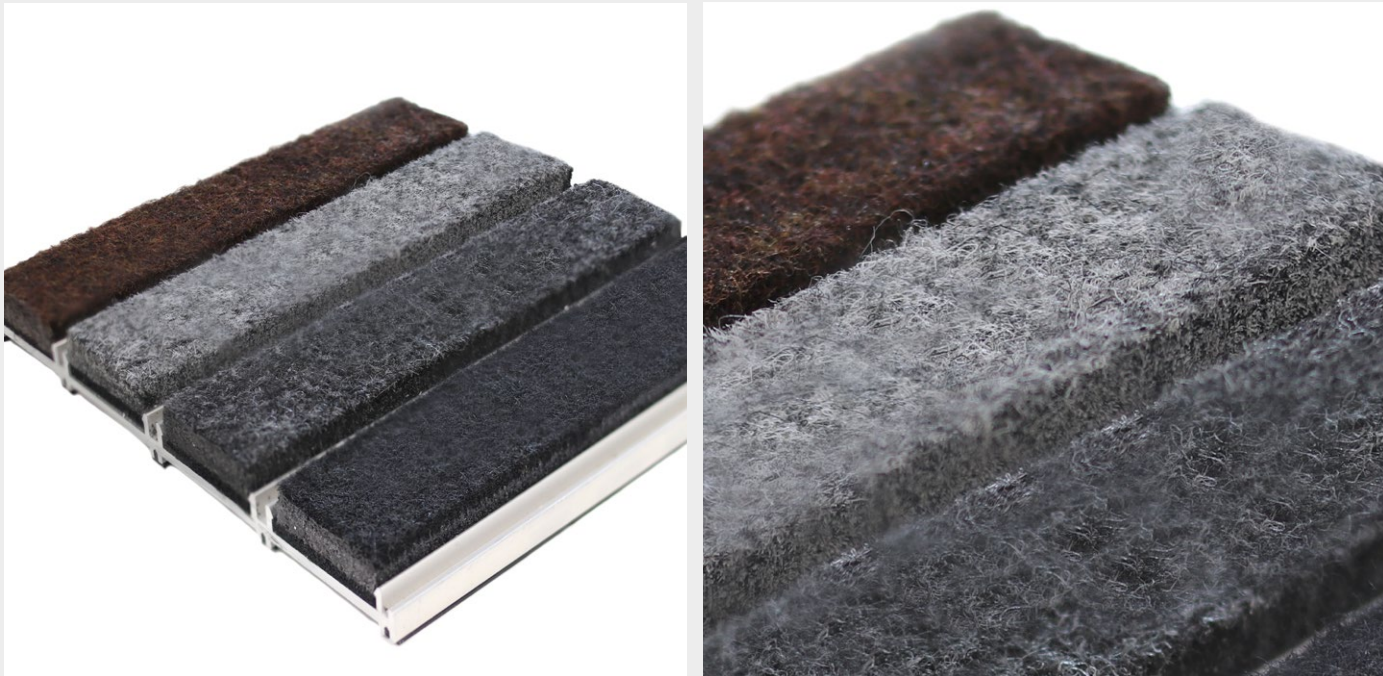
High performance entrance matting systems that features infills manufactured from sustainable materials and available in the most distinctive range of colours to provide unlimited design flexibility.

Kleen-Fit Guard DC001

Fibre Bonded Polypropylene Infill



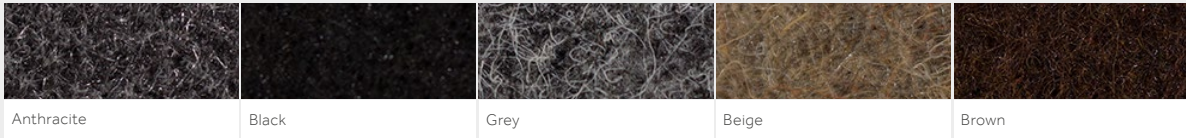
KLEEN-TEX COMMERCIAL PRODUCT GUIDE 2024 | FITTED ENTRANCE SYSTEMS



Standing strong against heavy foot traffic

An entrance matting system designed to handle high levels of foot traffic and heavy usage, made of dense material that is able to resist and endure even the toughest conditions.

Why Choose DC001?	Technical Details	Sizing
<ul style="list-style-type: none">» High moisture control» Hard wearing and durable» High foot traction» Easy to clean dirt collection channel» Suitable for indoor and outdoor use» Bespoke manufacturing to specification» Made with recycled content» 10 years Manufacturers Guarantee» Made in Britain	<p>Materials</p> <ul style="list-style-type: none">» Heavy duty fibre bonded polypropylene infill» Minimum 95% recycled aluminium grid <p>Applications</p> <ul style="list-style-type: none">» Heavy foot traffic areas» Sports venues subject to spikes and studs <p>Certifications</p> <ul style="list-style-type: none">» ISO9001:2008» BS4790:1987 (1996)» ISO 105-B02:2014 - 6» ISO 105-E01 - 5» ISO 105- X12 - 4» BS8300 DDA Regulations	<p>Infill Height</p> <ul style="list-style-type: none">» Low Profile - 12 mm» Standard Profile - 17 mm <p>Panel Widths</p> <ul style="list-style-type: none">» Up to 4000 mm <p>Length</p> <ul style="list-style-type: none">» Modular - no maximum length



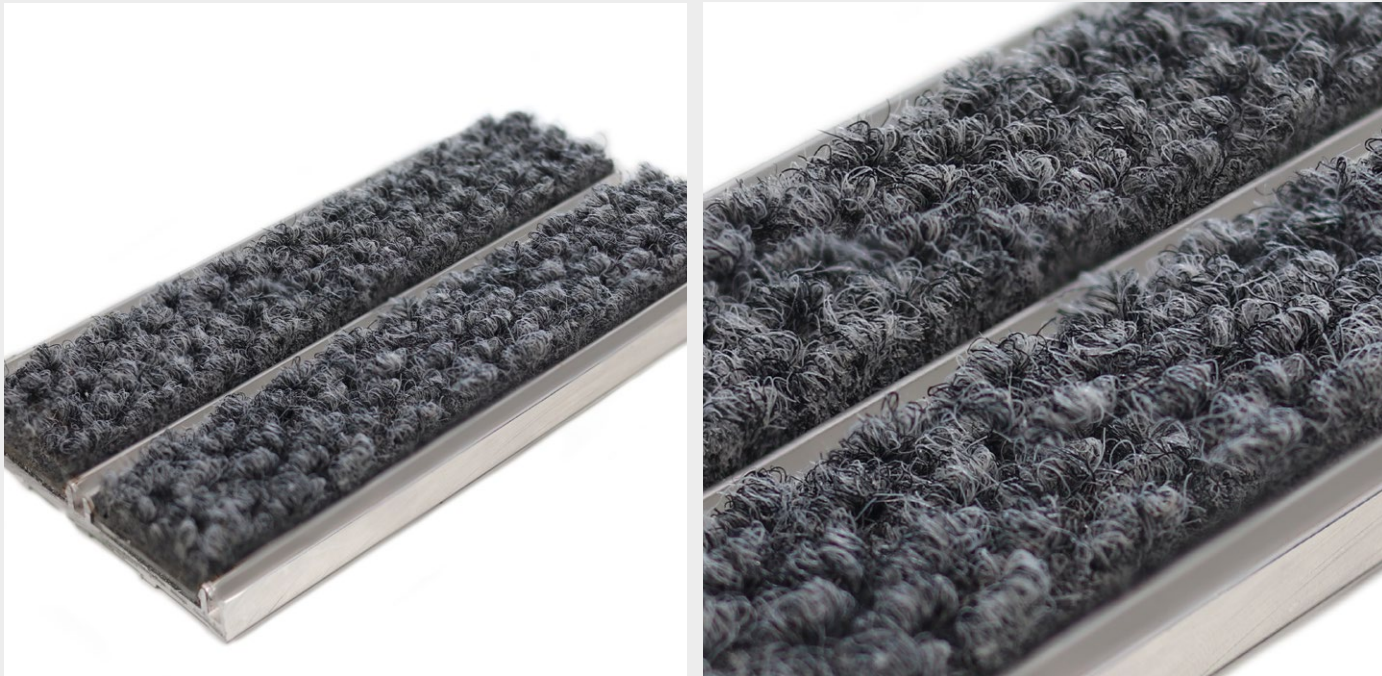
Full Technical Data



Or turn to Page 86

Kleen-Fit Guard DC003

Multi-Directional Polypropylene Infill



Step up to long lasting, cost effective protection

An extremely hard wearing, durable commercial entrance matting system that facilities low maintenance costs due to robust composition and multi-directional pile.

Why Choose DC003?	Technical Details	Sizing
<ul style="list-style-type: none">» Abrasive scraping action» Hard wearing and durable» Low upkeep costs» Fray and unravelling resistant» Sound dampening properties» Easy to clean dirt collection channel» Made with recycled content» 10 years Manufacturers Guarantee» Made in Britain	<p>Materials</p> <ul style="list-style-type: none">» 85% heavy duty polypropylene, 15% recycled polyester infill material» Minimum 95% recycled aluminium grid <p>Applications</p> <ul style="list-style-type: none">» Public Buildings» Corporate Entrances <p>Certifications</p> <ul style="list-style-type: none">» ISO9001:2008» BS4790:1987 (1996)» ISO 105-B02:2014 > 6» ISO 105-B01 - 5» ISO 105- X12 - 5» BS8300 DDA Regulations	<p>Infill Height</p> <ul style="list-style-type: none">» Low Profile - 12 mm» Standard Profile - 17 mm <p>Panel Widths</p> <ul style="list-style-type: none">» Up to 4000 mm <p>Length</p> <ul style="list-style-type: none">» Modular - no maximum length



Full Technical Data



Grid System

Kleen-Fit Guard DC004

Natural Coir Infill



A highly durable step in the right direction
A resilient entrance matting system that features high absorbency and is easy to maintain due to its natural occurring infill material composition, which delivers a contemporary aesthetic.

Why Choose DC004?	Technical Details	Sizing
<ul style="list-style-type: none">» Traditional choice for commercial buildings» High dirt removal function» Naturally occurring infill material» Easy to maintain» Easy to clean dirt collection channel» Bespoke manufacturing to specification» 10 years Manufacturers Guarantee» Made in Britain	<p>Materials</p> <ul style="list-style-type: none">» 100% natural brush coir» 100% PVC backing» Minimum 80% recycled aluminium grid <p>Applications</p> <ul style="list-style-type: none">» High foot traffic areas» Public buildings» Retail outlets» Education sector» Libraries <p>Certifications</p> <ul style="list-style-type: none">» ISO9001:2008» BS4790:1987 (1996)» BS8300 DDA Regulations	<p>Infill Height</p> <ul style="list-style-type: none">» Low Profile - 12 mm» Standard Profile - 17 mm <p>Panel Widths</p> <ul style="list-style-type: none">» Up to 4000 mm <p>Length</p> <ul style="list-style-type: none">» Modular - no maximum length



Brown Grey Natural

Full Technical Data

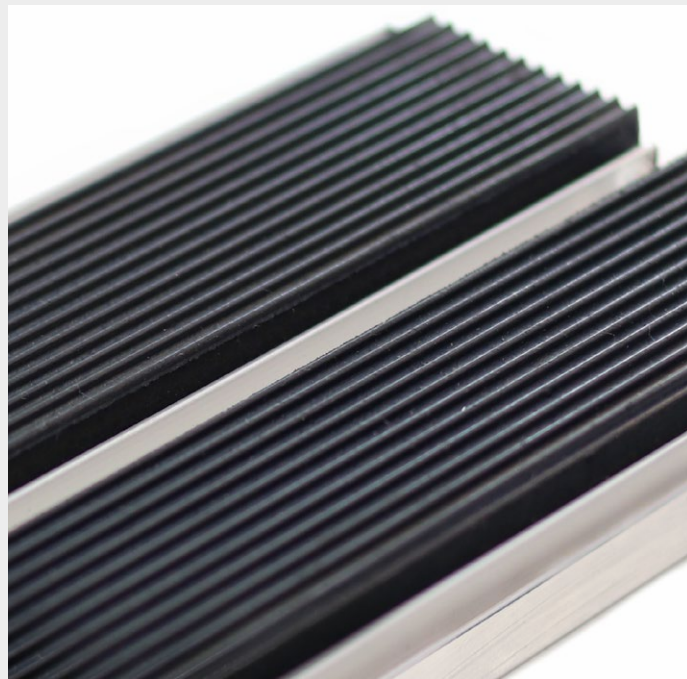


Or turn to Page 86

Grid System

Kleen-Fit Guard DC005

Ribbed Rubber Infill



Step up to long lasting, cost effective protection
A hygienic and economical entrance matting system that features a non-slip ribbed top surface infill with high grip cloth finished bottom to provide a hard wearing anti-slip entrance covering.

Why Choose DC005?	Technical Details	Sizing
<ul style="list-style-type: none">» First point of contact entrance solution» Perfect for high traffic areas» Hardwearing finish» Hygienic and economical solution» Sound dampening properties» Easy to clean dirt collection channel» Bespoke manufacturing to specification» 10 years Manufacturers Guarantee» Made in Britain	<p>Materials</p> <ul style="list-style-type: none">» Natural rubber and styrene butadiene rubber» Minimum 95% recycled aluminium grid <p>Applications</p> <ul style="list-style-type: none">» Heavy foot traffic areas» Sports venues subject to spikes and studs <p>Certifications</p> <ul style="list-style-type: none">» ISO9001:2008» BS4790:1987 (1996)» BS8300 DDA Regulations» DIN4106-B2	<p>Infill Height</p> <ul style="list-style-type: none">» Low Profile - 12 mm» Standard Profile - 17 mm <p>Panel Widths</p> <ul style="list-style-type: none">» Up to 4000 mm <p>Length</p> <ul style="list-style-type: none">» Modular - no maximum length



Black

Colours are subject to commercial tolerance.

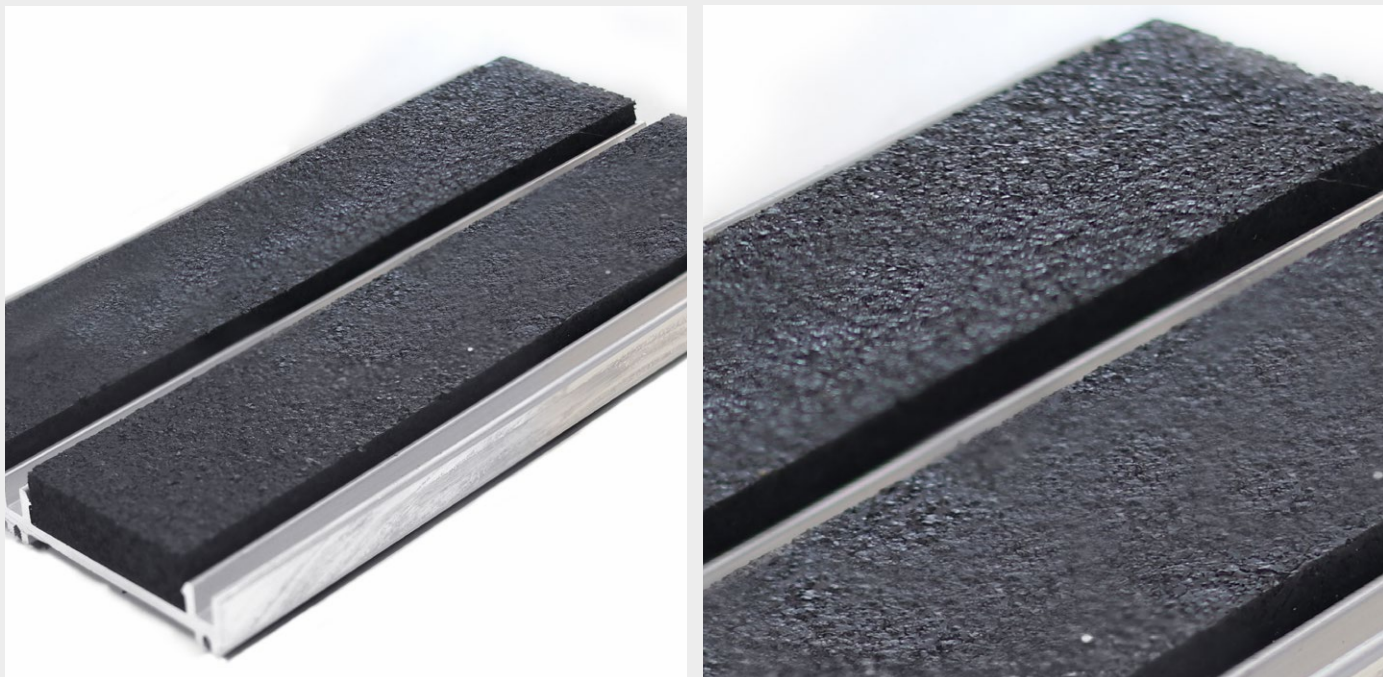
Full Technical Data



Or turn to Page 86

Kleen-Fit Guard DC008

Recycled Rubber Infill



Unleash the power of tough floor protection
A high performance, durable entrance matting system manufactured from 100% recycled materials. Suitable for a variety of applications that require mitigation against impact, sound, vibration and resistance to mechanical loads.

Why Choose DC008?	Technical Details	Sizing
<ul style="list-style-type: none">» Our most eco-friendly entrance system» Made with 100% recycled infill material» Highly durable surface» Long life span» Sound and vibration resistant» Easy to clean dirt collection channel» Bespoke manufacturing to specification» 10 years Manufacturers Guarantee» Made in Britain	<p>Materials</p> <ul style="list-style-type: none">» 100% recycled flecked rubber infill» Minimum 95% recycled aluminium grid <p>Applications</p> <ul style="list-style-type: none">» Extremely high foot traffic areas» Sports entrances» Hospitals» Education Sector <p>Certifications</p> <ul style="list-style-type: none">» ISO9001:2008» BS4790:1987 (1996)» BS8300 DDA Regulation» DIN4106 - B2» DIN51097 - Rated C	<p>Infill Height</p> <ul style="list-style-type: none">» Low Profile - 12 mm» Standard Profile - 17 mm <p>Panel Widths</p> <ul style="list-style-type: none">» Up to 4000 mm <p>Length</p> <ul style="list-style-type: none">» Modular - no maximum length



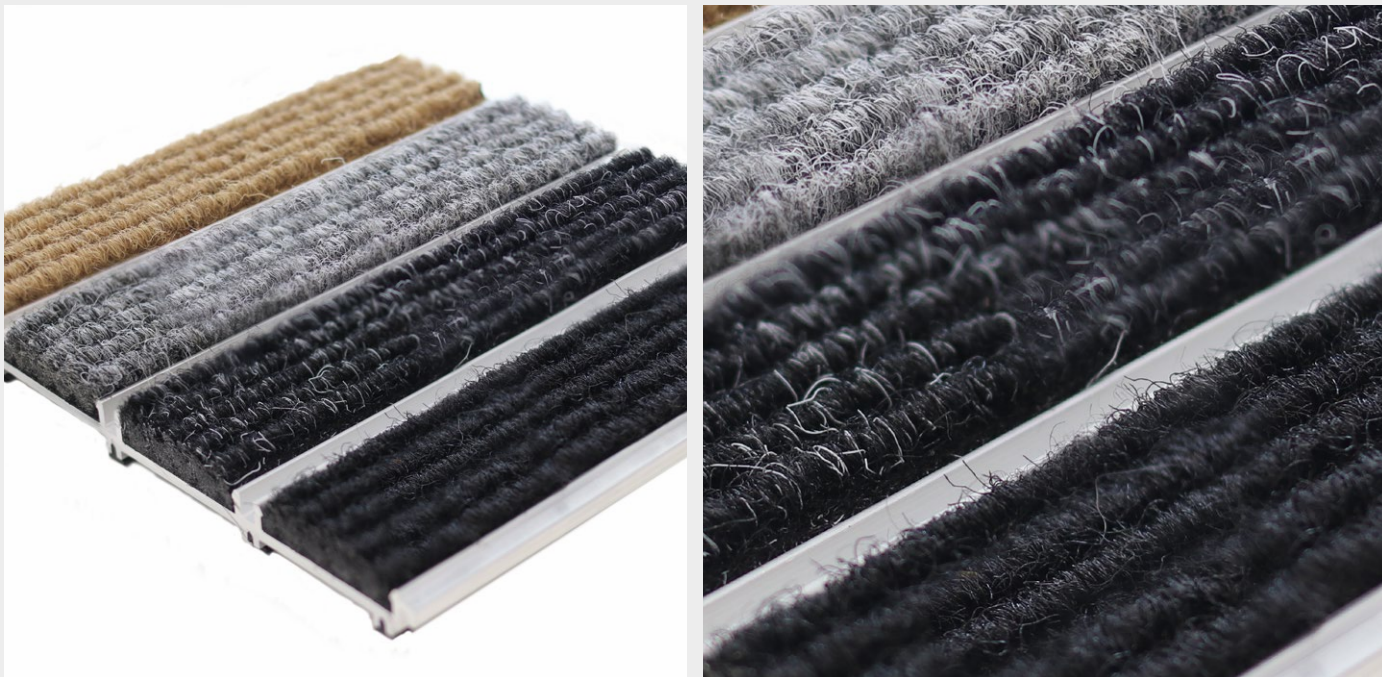
Full Technical Data



Or turn to Page 86

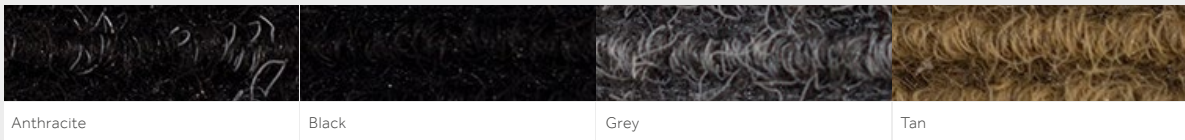
Kleen-Fit Guard DC022

Brushed Ribbed Polypropylene Infill



Aluminium grid system with classic looped pile fabric strips
A versatile entrance matting system that features a wide rib infill that creates a defined contrast in texture whilst delivering unrivalled scraping action and an enhanced absorbency profile.

Why Choose DC022?	Technical Details	Sizing
<ul style="list-style-type: none">» Perfect for high traffic areas» High absorbency profile» Heavy duty scraping action» Easy to clean dirt collection channel» Bespoke manufacturing to specification» 10 years Manufacturers Guarantee» Made in Britain	<p>Materials</p> <ul style="list-style-type: none">» 100% heavy ribbed polypropylene infill» Minimum 95% recycled aluminium grid <p>Applications</p> <ul style="list-style-type: none">» Education sector» Retail outlets» Public buildings <p>Certifications</p> <ul style="list-style-type: none">» ISO9001:2008» EN95/28 (ECE 118)» ISO 105-E01 - 5» BS4790:1987 (1996)» ISO 105-B02 - 6» ISO 105-X12 - 4» BS8300 DDA Regulation	<p>Infill Height</p> <ul style="list-style-type: none">» Low Profile - 12 mm» Standard Profile - 17 mm <p>Panel Widths</p> <ul style="list-style-type: none">» Up to 4000 mm <p>Length</p> <ul style="list-style-type: none">» Modular - no maximum length



Full Technical Data



Kleen-Fit Guard Eco

Natural Goat Hair Infill

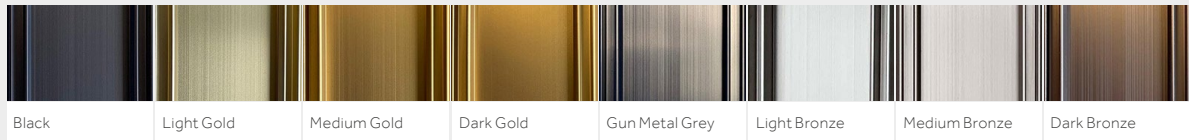


KLEEN-TEX COMMERCIAL PRODUCT GUIDE 2024 | FITTED ENTRANCE SYSTEMS



The colourful option to hard wearing fabric grid system
A hygienic and economical entrance matting system that features a high-traction ribbed top surface infill with high grip cloth finished bottom to provide a hard wearing slip-resistant entrance covering.

Why Choose Guard Eco?	Technical Details	Sizing
<ul style="list-style-type: none">» Made from recyclable materials» Bold and vibrant colour range» Available with custom designs» Extremely hardwearing and durable» Easy to clean dirt collection channel» Bespoke manufacturing to specification» 10 years Manufacturers Guarantee» Made in Britain	<p>Materials</p> <ul style="list-style-type: none">» Natural goat hair infill» 100% recycled aluminium grid <p>Applications</p> <ul style="list-style-type: none">» Heavy foot traffic areas» Health and education sectors» Retail and leisure sectors <p>Certifications</p> <ul style="list-style-type: none">» ISO 9001:2008» ISO 11925:2002» GreenRate Level A» See technical data for more certifications» BS1006:1990» ISO9239-1: CFL-s1	<p>Infill Height</p> <ul style="list-style-type: none">» Standard Profile - 12 mm <p>Panel Widths</p> <ul style="list-style-type: none">» Up to 4000 mm <p>Length</p> <ul style="list-style-type: none">» Modular - no maximum length



Full Technical Data



Or turn to Page 86

High Performance. Eco Sensitive.

Kleen-Fit Guard Eco has been carefully engineered to be one of the most sustainable, ethically sourced and environmentally conscious fitted entrance systems available on the market. All Guard Eco products are Global Green Tag Certified to help improve your BRE A+ rating.



Features infills that are manufactured with over 80% Cashmere goat hair fibres procured from sustainable resources



Delivers high performance dirt trapping capabilities that reduce dust and air pollution for improved air quality



Contains over 95% of aluminium procured from recycled sources



Features materials that are 100% natural insulators of heat, saving energy and money



Supplied with a competitive 10 year manufacturers guarantee for enhanced peace of mind



Manufactured in the UK to minimise carbon footprint incurred during shipping

Extensive Range of Colours

Our Guard Eco range of high performance entrance matting systems are available in an extensive range of colour options and can be utilised to create the most sustainable and colourful entrance matting systems for the commercial market.

512 Dapple Grey	513 Sage	514 Bilberry	515 Silver	516 Brilliant Blue	517 Sky	520 Damson	523 Larch	524 Russet
527 Dried Lavender	528 Apple	530 Heather	532 Sisal	534 Anthracite	538 Silver Birch	542 Night Sky	555 Wild Rice	558 Peacock
559 Burnt Orange	562 Rose Sunset	565 Evergreen	566 Lichen	567 Lagoon Blue	568 Jonquille	569 Clover	571 Mushroom	572 Milk Chocolate
573 Coffee Bean	574 Autumn Fern	576 Aquamarine	577 Burgundy	579 Petrol Green	580 Lettuce Leaf	581 Deep Purple	584 Blackberry	585 Orange Squash
587 Double Cream	589 Amethyst	592 Lovely Lilac	593 Diplomat Red	601 Truffle	614 Aegean	615 Fresh Water	616 Chilli	617 Magenta
618 Indigo	619 Aubergine	620 Charcoal	622 Taupe	623 Saddle	624 Dark Chocolate	625 Denim	628 Powder	631 Lipstick
632 Black	643 Melon	697 Lime	698 Cornflower	699 Olive Tang	700 Antique Rose			

Kleen-Fit System

KLEEN-TEX COMMERCIAL PRODUCT GUIDE 2024 | FITTED ENTRANCE SYSTEMS

Resilient Matting Systems for Fitted Wells and Recesses

Manufactured in Europe, our Kleen-Fit System profiles feature a resilient stainless steel wire construction that is suitable for installation throughout entrances that experience up to the heaviest of foot traffics.

The fitted entrance system is available with three types of inserts that can be tailored or even combined to meet specific project requirements, whilst delivering optimum performance.

Why Choose Kleen-Fit System?

- A complete fitted entrance system
- Designed for busy entrance areas
- Extremely hard wearing
- 3 insert types, each in 3 colour options
- Mix and match types and colours
- 3 recess depths available
- Frames and ramps also available
- CFL-s1 fire certification
- National Institute of Hygiene certification
- 3 year Manufacturers Guarantee
- Made in Europe

Kleen-Fit System Brush - Designed to absorb moisture, this abrasion and compression resistant fibre fill is suitable for indoor use only.

Kleen-Fit System Ribbed - Made with tough, hard rubber this robust fill is resistant to moisture, corrosion and varying temperature extremes. Suitable for indoor or outdoor use.

Kleen-Fit System Scrub - Constructed of strong bristles that actively scrape debris from passing foot traffic. Resistant to moisture, corrosion and varying temperature extremes and also suitable for indoor or outdoor installation.

Unique Combinations

Our individual Kleen-Fit System modules can be combined to create new combinations with unique properties to ensure your entrance solution services your need as effectively as possible.

Brush/Ribbed

Scrub/Brush

Scrub/Ribbed

Combines a strong scraping action with efficient moisture control properties. Suitable for indoor use only.

Highly effective against removal of soil and dirt with efficient moisture control properties. Suitable for indoor use only.

Impressive effectiveness in removal of heavy soil and dirt. Suitable for indoor and outdoor use.

Kleen-Fit System Brush



Welcome guests with a clean and stylish entrance

A highly durable tread surface mounted within an aluminium frame. The abrasion and compression resistant fiber fill will absorb any moisture, keeping your floors clean and dry. Kleen-Fit System Brush is designed for indoor use only.

Why Choose System Brush?	Technical Details	Sizing
<div>» Entry level entrance system solution</div> <div>» Effective cleaning function</div> <div>» High foot traction</div> <div>» Hardwearing finish</div> <div>» Abrasion and crush resistant</div> <div>» Bespoke manufacturing to specification</div> <div>» 3 years Manufacturers Guarantee</div> <div>» Made in Europe</div>	<div>Materials</div> <div>» Looped polypropylene</div> <div>» Aluminium with stainless steel wire</div> <div>Applications</div> <div>» Shopping centres</div> <div>» Public buildings</div> <div>» Offices</div> <div>» Leisure facilities</div> <div>» Hospitals</div> <div>Certifications</div> <div>» ITB NJ-5/KR/1106/09</div> <div>» 48/09/BB91133001</div> <div>» DIN 51130:2014-02.R11</div> <div>» 10/11/BB91104001</div> <div>» CFL-s1</div>	<div>Height</div> <div>» Low Profile - 12 mm</div> <div>» Medium Profile - 17 mm</div> <div>» High Profile - 22 mm</div> <div>Widths</div> <div>» Made to order - no maximum width</div> <div>Length</div> <div>» Made to order - no maximum length</div>



Colours are subject to commercial tolerance.

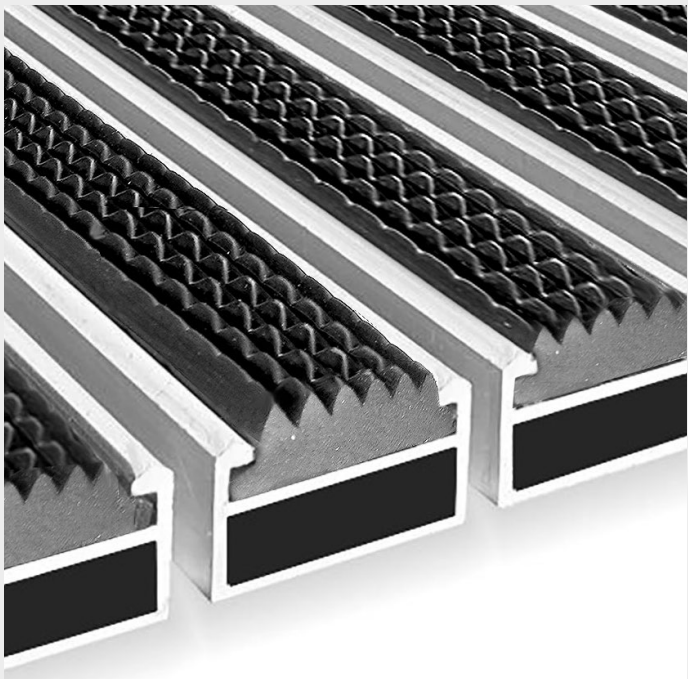
Full Technical Data



Or turn to Page 86

Grid System

Kleen-Fit System Ribbed



Aluminium grid system to fit any space

Made with tough, hard rubber this robust fill is resistant to moisture, corrosion and varying temperature extremes. Suitable for indoor and outdoor use.

Why Choose System Ribbed?	Technical Details	Sizing
<ul style="list-style-type: none">» Entry level entrance system solution» Strong dirt removal» Effective cleaning function» Abrasion and crush resistant» Humidity and corrosion resistant» Bespoke manufacturing to specification» 3 years Manufacturers Guarantee» Made in Europe	<p>Materials</p> <ul style="list-style-type: none">» Hard rubber» Aluminium with stainless steel wire <p>Applications</p> <ul style="list-style-type: none">» Shopping centres» Public buildings» Offices» Leisure facilities» Hospitals <p>Certifications</p> <ul style="list-style-type: none">» ITB NJ-5/KR/1106/09» 48/09/BB91133001» DIN 51130:2014-02:R12» 10/11/BB91104001» CFL-s1	<p>Height</p> <ul style="list-style-type: none">» Low Profile - 12 mm» Medium Profile - 17 mm» High Profile - 22 mm <p>Widths</p> <ul style="list-style-type: none">» Made to order - no maximum width <p>Length</p> <ul style="list-style-type: none">» Made to order - no maximum length



Black

Brown

Grey

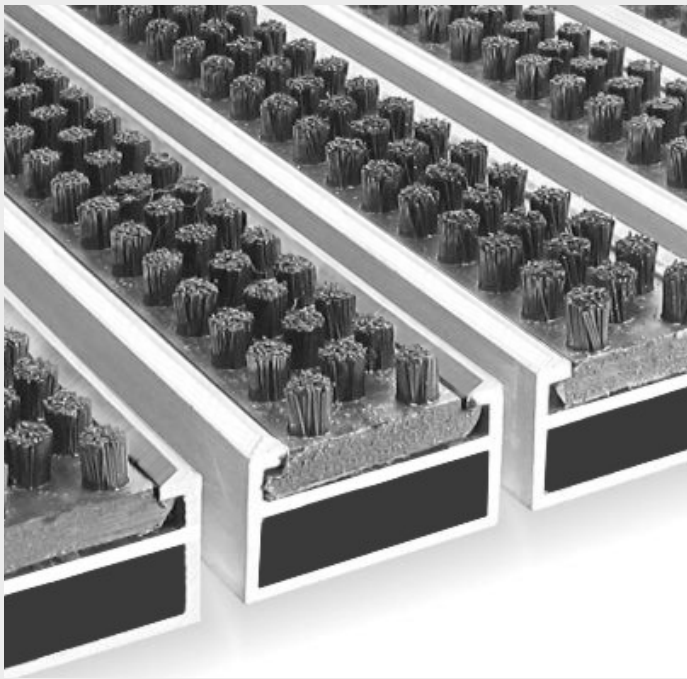
Full Technical Data



Or turn to Page 86

Grid System

Kleen-Fit System Scrub



Highly effective scrubbing fibres

Strong bristles actively scrape debris from passing foot traffic. This fill is also resistant to moisture, corrosion and varying temperature extremes. Use indoor or outdoor.

Why Choose System Scrub?	Technical Details	Sizing
<ul style="list-style-type: none">» Entry level entrance system solution» Extremely hard wearing» Designed for busy entrances» Perfect for high traffic areas» Resistant to humidity, corrosion and heat» Bespoke manufacturing to specification» 3 years Manufacturers Guarantee» Made in Europe	<p>Materials</p> <ul style="list-style-type: none">» Rigid polyamind (6.6) tufts» Aluminium with stainless steel wire <p>Applications</p> <ul style="list-style-type: none">» Shopping centres» Public buildings» Offices» Leisure facilities» Hospitals <p>Certifications</p> <ul style="list-style-type: none">» ITB NJ-5/KR/1106/09» 48/09/BB91133001» DIN 51130:2014-02:R13» 10/11/BB91104001» CFL-s1	<p>Height</p> <ul style="list-style-type: none">» Low Profile - 12 mm» Medium Profile - 17 mm» High Profile - 22 mm <p>Widths</p> <ul style="list-style-type: none">» Made to order - no maximum width <p>Length</p> <ul style="list-style-type: none">» Made to order - no maximum length



Black

Brown

Grey

Full Technical Data



Or turn to Page 86

Tile System

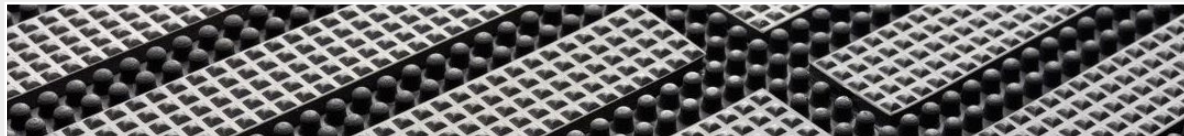
Kleen-Fit Concourse Tile



Easy to install, hard wearing tile system

Concourse is a primary matting system for use in commercial applications where the removal of foot borne contaminants at entrance ways is essential. The matting modules are supplied as solid moulded units in 18mm thickness.

Why Choose Concourse Tile?	Technical Details	Sizing
<ul style="list-style-type: none">» Slip resistant profile» Modular sizing without limits» 100% natural rubber» Quick and easy to install» Compatible with Matrix Tile» No minimum order quantity» 1 year Manufacturers Guarantee» Made in Britain	<p>Materials</p> <ul style="list-style-type: none">» Polymer enhanced heavy-duty SBR rubber <p>Applications</p> <ul style="list-style-type: none">» Shopping centres» Public buildings» Offices» Leisure facilities» Hospitals <p>Certifications</p> <ul style="list-style-type: none">» BS6307:1982 (2003)» BS4790:1987 (2014)» DOC-FF-1-70» TM144:2011	<p>Height</p> <ul style="list-style-type: none">» Standard Profile - 18 mm <p>Module Size</p> <ul style="list-style-type: none">» 500 x 1000 mm <p>Module Weight</p> <ul style="list-style-type: none">» 13 kg per module



Full Technical Data



Or turn to Page 86

Tile System

Kleen-Fit Matrix Tile



Easy to install, hard wearing tile system

Matrix Tile is a primary matting system for use in commercial applications where the removal of foot borne contaminants at entrance ways is essential. The matting modules are supplied as solid units complete with nylon wiper pads and 2 thicknesses.

Why Choose Matrix Tile?	Technical Details	Sizing
<ul style="list-style-type: none">» Ideal for recessed mat wells» Modular sizing without limits» 100% natural rubber base» Quick and easy to install» Compatible with Concourse Tile» No minimum order quantity» 1 year Manufacturers Guarantee» Made in Europe	<p>Materials</p> <ul style="list-style-type: none">» Solution dyed nylon» Polymer enhanced heavy duty SBR rubber <p>Applications</p> <ul style="list-style-type: none">» Shopping centres» Public buildings» Offices» Leisure facilities» Hospitals <p>Certifications</p> <ul style="list-style-type: none">» BS6307:1982 (2003)» BS4790:1987 (2014)» DOC-FF-1-70» TM144:2011	<p>Height</p> <ul style="list-style-type: none">» Low Profile - 12 mm» Standard Profile - 18 mm <p>Module Size</p> <ul style="list-style-type: none">» 500 x 1000 mm <p>Module Weight</p> <ul style="list-style-type: none">» Low Profile - 9 kg per module» Standard Profile - 13 kg per module



Full Technical Data



Anti-Fatigue Mats

Prevent problems caused by prolonged standing

Kleen-Comfort Standard • 60 x 85cm

Wave Goodbye To Tired Feet

A workforce that spends a lot of time on its feet is susceptible to back and joint damage, so it makes both pastoral and economic sense to protect employees from the stresses and strains of standing up to work.

Specialised anti-fatigue mats not only provide cushioning for your feet and joints, but they can also help improve your overall posture and reduce the risk of workplace injuries.

In addition to the physical benefits, anti-fatigue matting can also improve workplace safety by reducing slip and fall accidents. With their non-slip surfaces, these mats provide a secure footing for employees, even in wet or slippery conditions.

Investing in anti-fatigue matting is a smart choice for any employer looking to prioritise the health and safety of their workforce.

Anti-Fatigue Products

Industrial

Mats designed to reduce discomfort and fatigue caused by prolonged standing in industrial settings. Made from durable materials, these mats are easier to keep clean in messy workplace environments.

Office

Mats designed to enhance comfort and combat fatigue in office settings. Made to boost productivity and employee well-being, making them valuable additions to any office.

Did you know?

- **80% of individuals who work in a standing upright position** suffer from problems with their legs and/or back, with 30% of absenteeism attributed to back pain.
- Using an anti-fatigue mat during 8 hour working days **reduces tiredness and increases standing comfort by 50%** in comparison to a hard floor.
- Use of an anti-fatigue mat can **increase productivity in employees by up to 44%**.

Source: HSE



The 100% rubber anti-fatigue mat for industrial areas

A durable rubber mat that provides excellent traction and fatigue relief for your muscles and joints at the same time. The cushioned inner construction promotes excellent anti-fatigue properties and its surface texture and low profile edges convey a better grip.

Why Choose Kleen-Comfort?	Technical Details	Specification
<ul style="list-style-type: none">» Anti-fatigue mat for industrial areas» Impact absorbing foam core» Relief for muscles and joints» Cushioned for long standing comfort» Low profile edges to avoid trips» Suitable for indoor and outdoor use» 5 years Manufacturers Guarantee» Made in Europe	<p>Materials</p> <ul style="list-style-type: none">» 100% nitrile rubber (15% recycled rubber content)» 100% nitrile foam centre <p>Applications</p> <ul style="list-style-type: none">» Prolonged standing work positions» Production lines» Service points» Workstations <p>Certifications</p> <ul style="list-style-type: none">» EN 13501-1 / EFL-s1» EN 14041 Antistatic» NFSI High-Traction	<p>Height</p> <ul style="list-style-type: none">» Approx. 15 mm <p>Weight</p> <ul style="list-style-type: none">» 7.18 kg/m² <p>Standard Sizes</p> <ul style="list-style-type: none">» 60 x 85 cm» 85 x 150 cm» 85 x 285 cm <p>Please note - 85 x 285 cm mat is not suitable for laundering</p>



Full Technical Data



Or turn to Page 86



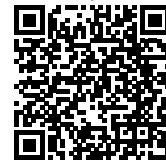
Extra safety protection where it's needed most

With this same low-profile edges and generous foam cushioning as the standard version, Kleen-Comfort Safety has bright yellow borders to draw attention to, and increase awareness of, dangerous or hazardous areas in the industrial workplace.

Why Choose Kleen-Comfort Safety?	Technical Details	Specification
<ul style="list-style-type: none">» Safety model with bright coloured edging» Anti-fatigue mat for industrial areas» Impact absorbing foam core» Relief for muscles and joints» Cushioned for long standing comfort» Low profile edges to avoid trips» Suitable for indoor and outdoor use» 5 years Manufacturers Guarantee» Made in Europe	<p>Materials</p> <ul style="list-style-type: none">» 100% nitrile rubber (15% recycled rubber content)» 100% nitrile foam centre <p>Applications</p> <ul style="list-style-type: none">» Prolonged standing work positions» Production lines» Service points» Workstations <p>Certifications</p> <ul style="list-style-type: none">» EN 13501-1 / EFL-s1» EN 14041 Antistatic» NFSI High-Traction	<p>Height</p> <ul style="list-style-type: none">» Approx. 15 mm <p>Weight</p> <ul style="list-style-type: none">» 7.18 kg/m² <p>Standard Sizes</p> <ul style="list-style-type: none">» 60 x 85 cm» 85 x 150 cm» 85 x 285 cm <p>Please note - 85 x 285 cm mat is not suitable for laundering</p>



Full Technical Data



Or turn to Page 86

Kleen-Cushion

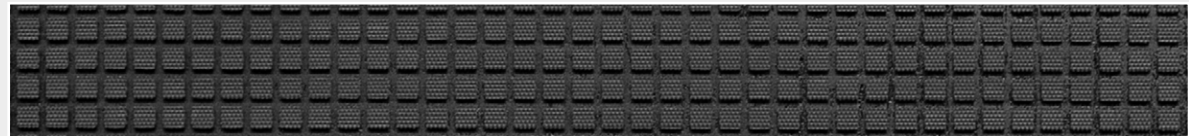
KLEEN-TEX COMMERCIAL PRODUCT GUIDE 2024 | ANTI-FATIGUE MATS



Durable and practical as well as cushioning and protecting

The rubber foam construction of this anti-fatigue mat combines durability with practicality. It is suitable for indoor and outdoor use, in wet or dry conditions offering comfort and protection wherever workers stand.

Why Choose Kleen-Cushion?	Technical Details	Specification	
<ul style="list-style-type: none">» Anti-fatigue mat for industrial use» Relief for muscles and joints» Cushioned for long standing comfort» Castellated pattern for increased grip» Slip-resistant rubber backing» Suitable for indoor and outdoor use» 2 years Manufacturers Guarantee» Made in Europe	Materials <ul style="list-style-type: none">» 100% nitrile rubber	Height <ul style="list-style-type: none">» Approx. 8 mm	Weight <ul style="list-style-type: none">» 4.20 kg/m²
	Applications <ul style="list-style-type: none">» Prolonged standing work positions» Production lines» Workstations	Standard Sizes <ul style="list-style-type: none">» 60 x 85 cm» 85 x 150 cm» 115 x 175 cm	
	Certifications <ul style="list-style-type: none">» EN 14041 Antistatic		



Full Technical Data



Or turn to Page 86

Kleen-Coil



Active comfort zones for targeted protection

This clever mat is constructed from 100% nitrile rubber and is designed with active comfort zones on its surface to massage feet where they stand and help protect against leg, foot and back fatigue. It also offers great protection from cold floors.

Why Choose Kleen-Coil?	Technical Details	Specification	
<ul style="list-style-type: none">» Active comfort zones» Anti-fatigue for industrial areas» Oil and chemical resistant» Relief for muscles and joints» Cushioned for long standing comfort» Slip-resistant rubber backing» Suitable for indoor and outdoor use» 5 years Manufacturers Guarantee» Made in Europe	Materials <ul style="list-style-type: none">» 100% nitrile rubber	Height <ul style="list-style-type: none">» Approx. 7-8 mm	Weight <ul style="list-style-type: none">» 4.50 kg/m²
	Applications <ul style="list-style-type: none">» Prolonged standing work positions» Production lines» Workstations	Standard Sizes <ul style="list-style-type: none">» 75 x 85 cm» 85 x 150 cm» 85 x 300 cm» 115 x 175 cm	
	Certifications <ul style="list-style-type: none">» EN 13501-1 / DFL-s1» EN 14041 Antistatic» NFSI High-Traction		



Full Technical Data



Or turn to Page 86

Industrial

Kleen-Thru Plus



Hygienic anti-bacterial protection, ideal for use in wet areas

With ribbed holes for drainage, this washable workspace mat is made from 100% nitrile rubber with built-in anti-bacterial properties that last for the life of the mat. This versatile mat helps to ease the fatigue in jobs where long periods of standing are required.

Why Choose Kleen-Thru Plus?	Technical Details	Specification
<ul style="list-style-type: none">» Anti-bacterial hospitality matting» Certified anti-microbial protection» Ribbed surface for increased foot traction» Impact absorbing to avoid floor damage» Drainage holes to allow wet area usage» Slip-resistant rubber» Oil and chemical resistant» 5 years Manufacturers Guarantee*» Made in Europe	<p>Materials</p> <ul style="list-style-type: none">» 100% nitrile rubber <p>Applications</p> <ul style="list-style-type: none">» Prolonged standing work positions» Professional kitchens» Wet areas» Bars <p>Certifications</p> <ul style="list-style-type: none">» EN 13501-1 / EFL-s1» AATCC 30 / AATCC 100» NFSI High-Traction	<p>Height</p> <ul style="list-style-type: none">» Approx. 8 mm <p>Weight</p> <ul style="list-style-type: none">» 4.33 kg/m² <p>Standard Sizes</p> <ul style="list-style-type: none">» 60 x 86 cm» 86 x 143 cm <p>Linking</p>



Full Technical Data



Or turn to Page 86

*2 year guarantee under industrial laundry conditions.
For all mats we reserve the right of production-related tolerance of +/- 3% in size. Colours are subject to commercial tolerance.

Industrial

Kleen-Scape



Active comfort zones for targeted protection

Suitable for indoor and outdoor use, this hard-wearing rubber mat is oil, fat, chemical, solvent, heat and cold resistant, and can be used anywhere with strong scraper profile.

Why Choose Kleen-Scape?	Technical Details	Specification
<ul style="list-style-type: none">» Anti-fatigue mat for industrial areas» 100% nitrile rubber mat» Oil and chemical resistant» Suitable for use indoors or outdoors» Slip-resistant rubber even when wet» 5 years Manufacturers Guarantee*» Made in Europe	<p>Materials</p> <ul style="list-style-type: none">» 100% nitrile rubber (15% recycled rubber content) <p>Applications</p> <ul style="list-style-type: none">» Production lines» Workstations» Entrances <p>Certifications</p> <ul style="list-style-type: none">» EN 13501-1 / EFL-s1» EN 14041 Antistatic» NFSI High-Traction	<p>Height</p> <ul style="list-style-type: none">» Approx. 5.5 mm <p>Weight</p> <ul style="list-style-type: none">» 4.20 kg/m² <p>Standard Sizes</p> <p>Ribbed Pattern</p> <ul style="list-style-type: none">» 75 x 85 cm» 85 x 150 cm» 115 x 175 cm» 85 x 300 cm <p>Chequerboard Pattern</p> <ul style="list-style-type: none">» 75 x 85 cm» 85 x 150 cm» 115 x 175 cm



Ribbed



Chequerboard

Full Technical Data



Or turn to Page 86

*2 year guarantee under industrial laundry conditions.
For all mats we reserve the right of production-related tolerance of +/- 3% in size. Colours are subject to commercial tolerance.

Kleen-Foam



KLEEN-TEX COMMERCIAL PRODUCT GUIDE 2024 | ANTI-FATIGUE MATS

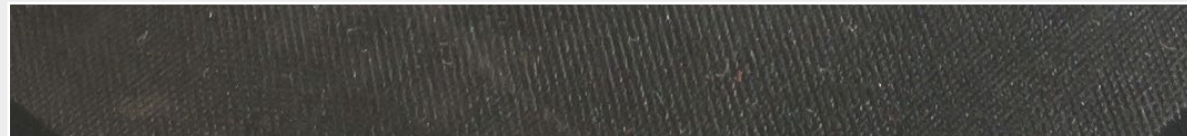


Cushions and protects, reducing fatigue

This 100% nitrile foam mat literally cushions employees who have to stand for long periods of time, helping to reduce fatigue and improve well-being.

Why Choose Kleen-Foam?	Technical Details	Specification	
» Deep cushioning floor pads » Anti-fatigue mat for industrial areas » Improves employee well being » Improves productivity » Impact resistance minimising breakages » 2 years Manufacturers Guarantee » Made in Europe	Materials » 100% nitrile foam rubber	Height » Approx. 11.5 mm	Weight » 3.0 kg/m²
	Applications » Prolonged standing work positions » Production lines » Service points » Workstations	Standard Sizes » 45 x 70 cm » 70 x 135 cm	

Full Technical Data



Full Technical Data



Or turn to Page 86

Kleen-Comfort Design



Fully customised graphics on a cushioned anti-fatigue mat

A mat for use in places where people need to stand for an extended period of time. Kleen-Comfort Design has a relieving effect for muscles and joints due to it's cushioned foam rubber construction. It can be printed with your artwork making it great for company logos.

Why Choose Kleen-Comfort Design?	Technical Details	Specification	
» Anti-fatigue mat with custom graphics » Impact absorbing foam core » Relief for muscles and joints » Cushioned for long standing comfort » Low profile edges to avoid trips » 5 years Manufacturers Guarantee* » Made in Europe	Materials » Printed high-twist nylon surface » 100 % nitrile rubber with foam centre	Height » Approx. 20 mm	Weight » 5.77 kg/m²
	Applications » Prolonged standing work positions » Corporate identity » Service points » Workstations	Standard Sizes » 55 x 78 cm » 85 x 150 cm » 85 x 285 cm	
	Certifications » EN 13501-1 / EFL-s1 » NFSI High-Traction	Please note - 85 x 285 cm mat is not suitable for laundering	
	Colour » See page 39 for Jet-Print palette details		

Full Technical Data



Full Technical Data



Or turn to Page 86

Office

Kleen-Comfort Office



Relief for your muscles and joints in the workplace

Kleen-Comfort Office is the ideal cushioned anti-fatigue workplace mat. Made with a polypropylene surface, it is extremely durable and perfect for long standing comfort at workstations and counters.

Why Choose Kleen-Comfort Office?	Technical Details	Specification	
» Anti-fatigue mat with durable surface » Impact absorbing foam core » Made with recycled rubber content » Relief for muscles and joints » Cushioned for long standing comfort » Low profile edges to avoid trips » 5 years Manufacturers Guarantee » Made in Europe	Materials » 50% polyester, 50% polypropylene surface » 100% nitrile foam centre » 100% nitrile rubber backing (15% recycled rubber content) Applications » Prolonged standing work positions » Service points » Workstations Certifications » EN 13501-1 / EFL-s1 » DOC-FF-1-70 » NFSI High-Traction	Height » Approx. 18 mm	Weight » 5.89 kg/m ²
		Standard Sizes » 55 x 78 cm » 85 x 150 cm » 85 x 285 cm	



Full Technical Data



Or turn to Page 86

Office

Kleen-Comfort Soft



Soft nylon surface with cushioned rubber foam backing

With a stylish soft, yet durable nylon surface, this mat offers the perfect solution for workers who stand for long periods. Its anti-fatigue properties are provided by the 100% nitrile foam cushioning.

Why Choose Kleen-Comfort Soft?	Technical Details	Specification	
» Anti-fatigue mat with soft surface » Impact absorbing foam core » Relief for muscles and joints » Cushioned for long standing comfort » Low profile edges to avoid trips » 5 years Manufacturers Guarantee* » Made in Europe	Materials » 100% high-twist nylon polyamide 6 surface » 100% nitrile foam centre » 100% nitrile rubber backing Applications » Prolonged standing work positions » Service points » Workstations Certifications » DOC-FF-1-70 » NFSI High-Traction	Height » Approx. 21 mm	Weight » 5.79 kg/m ²
		Standard Sizes » 55 x 78 cm » 85 x 150 cm » 85 x 285 cm	



Full Technical Data



Or turn to Page 86

Workplace Safety Mats

Practical and protective products for all eventualities

Kleen-Wheel Forklift Mat • Mineral Grey • 200 x 400cm

Create secure, hazard free working environments

Our high-performing Workplace Safety mats are meticulously engineered to enhance workplace safety across various industries and settings.

Crafted with high-quality materials and advanced technology, our Workplace Safety Mats offer unbeatable slip resistance and ergonomic support, reducing the risk of slips, trips, and falls. Whether in industrial, commercial or office environments, these mats provide a reliable defence against common workplace hazards.

Kleen-Tex recognises the critical importance of safety in the workplace, and our range of safety mats comes in various styles and sizes to suit different needs and preferences.

Invest in Kleen-Tex's Workplace Safety Mats to create a secure and accident-free workplace, fostering employee well-being, productivity, and peace of mind. With these top-of-the-line safety mats, you can prioritise safety without compromising on quality and functionality.

Workplace Safety Products

Health

Supporting safe, healthy and productive working environments. Health Mats are designed to reduce the transmission of bacteria in places where cleanliness is imperative.

Safety

Specialist safety mats enhance workplace safety throughout many industries. Range of solutions such as slip-resistance, fire-resistance, chemical-resistance, cable tidy etc.

Safety Messaging

Clean and tidy, functional solutions for mandatory safety signage. Safety Messaging Mats provide important information, as well as a safe and clean building solution.

Kleen-Cable Mat

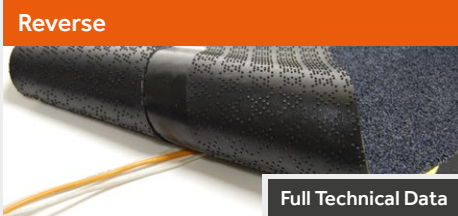


KLEEN-TEX COMMERCIAL PRODUCT GUIDE 2024 | WORKPLACE SAFETY



Reduce accidents by containing loose cables and highlighting potential tripping hazard
Loose cables and wires in offices and production areas are a safety hazard. The Kleen-Cable Mat has been developed to help prevent such a hazard and reduce trips and falls. Easy to place over loose cables, the high visibility borders provide a visual warning for staff and visitors.

Why Choose Kleen-Cable Mat?	Technical Details	Specification
<ul style="list-style-type: none">» Easily installable cable safety solution» Safely tidy loose wires and cables» Integrated channel to hold cables in place» High visibility warning borders» Slip-resistant rubber backing» Suitable for underfloor heating» 2 years Manufacturers Guarantee» Made in Europe	<p>Materials</p> <ul style="list-style-type: none">» 100 % high-twist nylon polyamide 6.6» 100 % nitrile rubber backing <p>Applications</p> <ul style="list-style-type: none">» Anywhere loose cables or wires present a possible trip hazards <p>Certifications</p> <ul style="list-style-type: none">» EN 13501-1 / DFL-s1» EN 14041 Antistatic	<p>Height</p> <ul style="list-style-type: none">» Approx. 13 mm <p>Weight</p> <ul style="list-style-type: none">» Approx. 3.95 kg/m² <p>Standard Sizes</p> <ul style="list-style-type: none">» 40 x 120 cm



Full Technical Data



Or turn to Page 86



For all mats we reserve the right of production-related tolerance of +/- 3% in size. Colours are subject to commercial tolerance.

Kleen-Cable Mat Rubber



Reduce accidents in outdoor, industrial and wet areas by containing loose cables
Loose cables and wires in offices and production places are a safety hazard. The Kleen-Cable Mat Rubber version of this safety product allows for use in conditions where oil, grease and chemicals are present and can be used in outdoor places.

Why Choose Kleen-Cable Mat Rubber?	Technical Details	Specification
<ul style="list-style-type: none">» Go anywhere cable protection» Safely tidy loose wires and cables» Integrated channel to hold cables in place» High visibility warning borders» Made with recycled rubber content» Slip-resistant rubber backing» 2 years Manufacturers Guarantee» Made in Europe	<p>Materials</p> <ul style="list-style-type: none">» 100% nitrile rubber (15% recycled rubber content) <p>Applications</p> <ul style="list-style-type: none">» Anywhere loose cables or wires present a possible trip hazards» Suitable for Outdoor Use <p>Certifications</p> <ul style="list-style-type: none">» EN14041 Antistatic	<p>Height</p> <ul style="list-style-type: none">» Approx. 5 mm <p>Weight</p> <ul style="list-style-type: none">» Approx. 5.8kg/m² <p>Standard Sizes</p> <ul style="list-style-type: none">» 40 x 120 cm» 40 x 160 cm and 40 x 200 cm available to order



Full Technical Data



Or turn to Page 86



For all mats we reserve the right of production-related tolerance of +/- 3% in size. Colours are subject to commercial tolerance.

Kleen-Wheel Forklift Mat



KLEEN-TEX COMMERCIAL PRODUCT GUIDE 2024 | WORKPLACE SAFETY



Warehouse entrance mats for wheeled equipment

Heavy duty mat that removes water and dirt from wheels as they enter your building, keeping your loading bay floor clean and dry. Reduces the risk of employees slipping on a wet floor and lessens the ingress of dirt and moisture, saving on cleaning costs.

Why Choose Kleen-Wheel Forklift Mat?

- » Highly absorbant, durable surface
- » Removes dirt and moisture from wheels
- » Extra thick rubber backing for strength
- » Save money on repeat cleaning costs
- » Reduces the risks of slips and trips
- » Made with recycled rubber content
- » 2 years Manufacturers Guarantee
- » Made in Europe

Technical Details

- Materials**
- » A combination of Micro Nylon and High-Twist Nylon (HTN) Polyamide 6 (Sustainable yarn made from 50 % post industrial waste)
 - » 100 % nitrile rubber backing (15% recycled rubber content)
- Applications**
- » Dispatch area
 - » Loading bay
 - » Warehouse
- Certifications**
- » EN 14041 Antistatic

Specification

- Height**
- » Approx. 16 mm
- Weight**
- » 5.02 kg/m²
- Standard Widths**
- » 85 cm
 - » 115 cm
 - » 150 cm
 - » 200 cm
- Lengths**
- » Up to 700 cm

Full Technical Data



Or turn to Page 86

Jet-Print Hi-Vis



Highlights potential hazards

A durable logo mat offering customised and highly visible safety messages or graphics to draw attention to any potential hazards and to remind people to take care.

Why Choose Jet-Print Hi-Vis?

- » Highly visible safety signage
- » High dirt and moisture absorption
- » Fully serviceable product
- » Fully customisable with your own designs
- » Slip-resistant rubber backing
- » Suitable for underfloor heating
- » 5 years Manufacturers Guarantee*
- » Made in Europe

Technical Details

- Materials**
- » 100% nylon (HTN) polyamide 6.6 surface
 - » 100% nitrile rubber
- Applications**
- » Public Buildings
 - » Workplaces
 - » Factories
 - » Warehousing
- Certifications**
- » EN 13501-1 / CFL-s1
 - » EN 14041 Antistatic
 - » NFSI High-Traction

Specification

- Height**
- » Approx. 9 mm
- Weight**
- » 2.48 kg/m²
- Standard Sizes**
- » 85 x 120 cm
 - » 85 x 150 cm
 - » 85 x 300 cm
 - » 115 x 175 cm
 - » 115 x 240 cm
- Widths**
- » 60 cm
 - » 75 cm
 - » 85 cm
 - » 115 cm
 - » 150 cm
 - » 200 cm
- Lengths**
- » Up to 700 cm

Full Technical Data



Black



Hi-Vis Yellow



Or turn to Page 86

*2 year guarantee under industrial laundry conditions.

For all mats we reserve the right of production-related tolerance of +/- 3% in size. Colours are subject to commercial tolerance.

Kleen-Sticky Mat



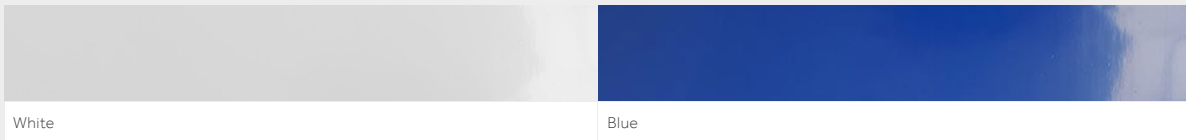
KLEEN-TEX COMMERCIAL PRODUCT GUIDE 2024 | WORKPLACE SAFETY



Maximise the prevention of contamination with this anti-bacterial barrier matting

Designed for use in workplaces where hygiene is paramount, these clever sticky mats offer maximum removal of fine dust, dirt and other contaminants. Ideal for use in laboratories, hospitals, surgeries or clean operating areas.

Why Choose Kleen-Sticky Mat?	Technical Details	Specification
<ul style="list-style-type: none">» Minimise foot borne contamination» Facilitates cart and foot traffic» 30 or 60 layers of renewable protection» Anti-bacterial elements» Optional nitrile rubber containment frame» Easy relocation» Quick removal» Made in Europe	<p>Materials</p> <ul style="list-style-type: none">» Frame: 100% nitrile rubber (15% recycled rubber content)» Mat: 100% polyethylene <p>Applications</p> <ul style="list-style-type: none">» Clean rooms» Laboratories» Medical facilities	<p>Height</p> <ul style="list-style-type: none">» 30 Sheets - 1.14 mm» 60 Sheets - 2.19 mm <p>Standard Sizes</p> <p>Kleen-Sticky Mat</p> <ul style="list-style-type: none">» 90 x 45 cm» 90 x 60 cm» 115 x 45 cm» 115 x 60 cm» 115 x 90 cm <p>Kleen-Sticky Frame</p> <ul style="list-style-type: none">» 126 x 56 cm» 126 x 71 cm» 126 x 101 cm



Full Technical Data



Or turn to Page 86

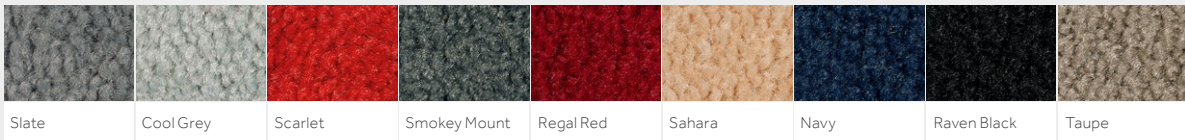
Kleen-Cooler Mat



No more spills and slips

A customised mat to fit around your water cooler and ensure that the area around the device stays dry and protects against potential spills and slip hazards.

Why Choose Kleen-Cooler Mat?	Technical Details	Specification
<ul style="list-style-type: none">» Custom fit for water dispensers» Minimising potential slips from spilled water» Contemporary colour selection» Durable and vibrant nylon surface» Made with recycled rubber content» Slip-resistant rubber backing» Suitable for underfloor heating» 2 years Manufacturers Guarantee» Made in Europe	<p>Materials</p> <ul style="list-style-type: none">» 100% high-twist nylon polyamid 6.6 surface» 100% nitrile rubber (15% recycled rubber content) <p>Applications</p> <ul style="list-style-type: none">» Water dispensers <p>Certifications</p> <ul style="list-style-type: none">» EN 13501-1 / CFL-s1	<p>Height</p> <ul style="list-style-type: none">» Approx. 11-12 mm <p>Weight</p> <ul style="list-style-type: none">» 2.4 kg/m² <p>Standard Sizes</p> <ul style="list-style-type: none">» 85 x 60 cm



Full Technical Data



Or turn to Page 86

Wet Area Mats

Durable and hygienic modular solutions with practical uses

Kleen-Tile • Dark Blue

Create secure, hazard free working environments

Wet area tiles are a high-quality flooring solution designed specifically for wet and moisture-prone areas such as locker rooms, swimming pools, and spa facilities.

Made from durable and slip-resistant materials that provide excellent traction, they're easy to clean and maintain, making them an ideal choice for high-traffic areas.

Our selection of tiles are available in a range of colours and styles, allowing you to create a customised look that matches your decor. A preformed interlocking system makes them quick and easy to install in any space, shape or size.

With their high performance and stylish appearance, Kleen-Tex's wet area tiles are an excellent choice for any space where moisture is a concern.

Typical Applications

- » Poolside
- » Wet rooms
- » Locker rooms
- » Shower rooms
- » Saunas



Kleen-Wave Graphite



Interlocking area tiles designed for wet areas
The curved design of the lines and hollow construction promotes immediate drainage and allows water to pass directly through the tile. The soft surface of provides a comfortable, slip resistant, safe and dry cushioned surface for bare feet. Easy to install and keep clean.

Why Choose Kleen-Tile?	Technical Details	Specification
<ul style="list-style-type: none">» Interlocking wet area tile» UV resistant material» Reduce wet area accidents» Soft touch traction for bare feet» Modular construction - suitable for any area» Easy to install» 3 year or 3 million crossings guarantee» Made in Europe	<p>Materials</p> <ul style="list-style-type: none">» UV-resistant, anti bacterially treated vinyl <p>Applications</p> <ul style="list-style-type: none">» Poolside» Locker rooms» Wet rooms» Shower rooms <p>Certifications</p> <ul style="list-style-type: none">» EN 13501-1 / BFL-s1» EN ISO 11925-2» EN ISO 9239-1» DIN 51097: A + B + C» DIN EN 13451/15288-1: 26°» ISO 16000-9: TVOC Class A+	<p>Height</p> <ul style="list-style-type: none">» Approx. 10 mm <p>Weight</p> <ul style="list-style-type: none">» Approx. 4.2 kg/m² <p>Tile Size</p> <ul style="list-style-type: none">» 30.4 x 30.4 cm <p>Interlocking modular link system allows for infinite size option</p> <p>Pack Size</p> <ul style="list-style-type: none">» 16 tiles per pack (=1.47 m²)



Full Technical Data

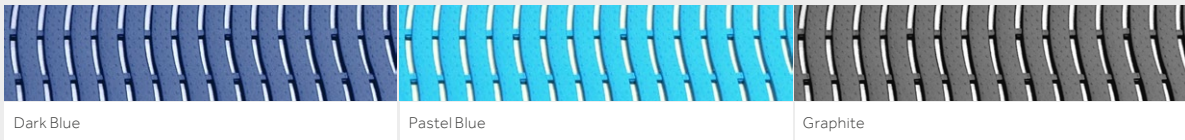


Or turn to Page 86



Safety floor matting for locker rooms, poolside, saunas and shower rooms
Designed specifically for wet areas (both indoors and outdoors), its interlocking structure makes it great for covering large spaces - and is 100% recyclable. Reduces slip and trip accidents by providing good traction for bare feet reducing the likelihood of serious injury.

Why Choose Kleen-Wave?	Technical Details	Specification
<ul style="list-style-type: none">» Interlocking wet area tile» Made from recyclable material» Anti-microbial properties» Reduce wet area accidents» Soft touch traction for bare feet» Modular construction - suitable for any area» Easy to install» 2 year or 2 million crossings guarantee» Made in Europe	<p>Materials</p> <ul style="list-style-type: none">» 100% recyclable PET plastic <p>Applications</p> <ul style="list-style-type: none">» Poolside» Locker rooms» Wet rooms» Shower rooms <p>Certifications</p> <ul style="list-style-type: none">» DIN 51097: A + B + C» DIN EN 13451/15288-1: 30°» ISO 16000-9: TVOC Class A+	<p>Height</p> <ul style="list-style-type: none">» Approx. 9 mm <p>Weight</p> <ul style="list-style-type: none">» Approx. 2.2 kg/m² <p>Tile Size</p> <ul style="list-style-type: none">» 58 x 100 cm <p>Interlocking modular link system allows for infinite size option</p>



Full Technical Data



Or turn to Page 86

Transportation Mats

Achieve maximum protection in and around vehicles

Car Protector Set Premium

Reserve and Preserve

Mats designed for the transport sector play a crucial role in ensuring cleanliness and safety within vehicles. These mats are specifically engineered to withstand the challenges and demands of transportation environments. Practical solutions designed to preserve cleanliness and enhance safety during or around traveling.

From reserving a car parking space for customer collections to ensuring an aircraft looks

immaculate once every passenger has embarked, our Transportation Mats are high-quality products designed for a variety of purposes.

With their superior performance and stylish appearance, Kleen-Tex's Transportation mats are an excellent choice for anyone who wants to keep their vehicle's interior looking well-maintained.

Transportation Products

Public Transport

Designed to enhance passenger comfort, experience and cleanliness. Made to withstand high traffic and wear and made from easy to clean materials.

Car Mats

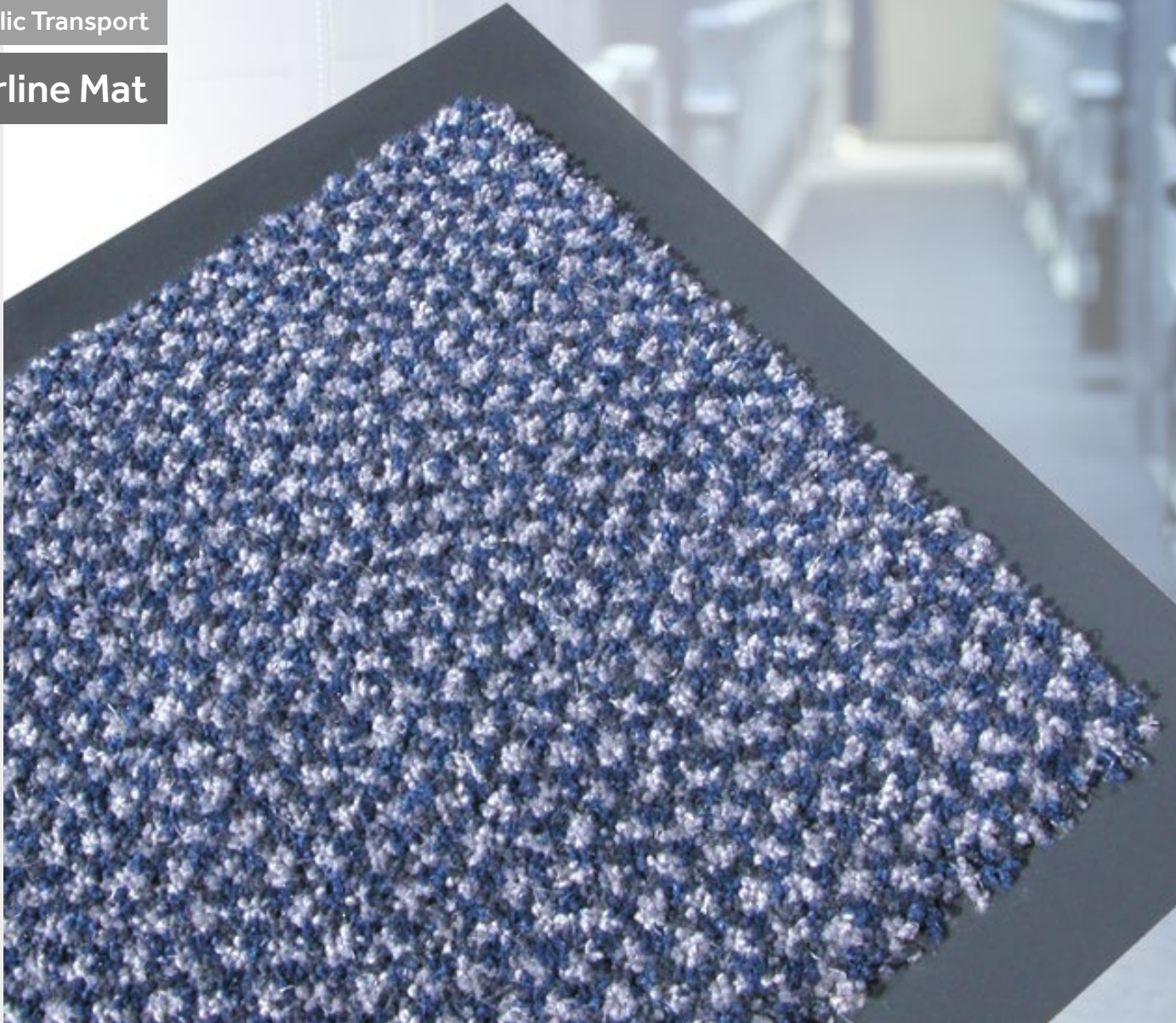
Mats manufactured with vehicle protection and long-term cleanliness in mind. Designed to provide traction where needed and a barrier to potentially damaging hazards.



Car Protector Set Premium

"Excellent mat for the boot of the car, keeps it cleaner and stops the dog scratching the paintwork when she jumps in."

Trusted Customer



Created exclusively for use on passenger aircraft, this mat ticks all the boxes for the aviation industry
Highly absorbent and durable wool/nylon fibres combined with coarse monofilament scrapers makes this the ideal product to remove foot borne moisture from passenger and cabin crew shoes. Constructed with a flame retardant PVC backing.

Why Choose Airline Mat?	Technical Details	Specification
<ul style="list-style-type: none">» Meets CAA requirements» Dries and cleans shoes on entry» Safer passenger boarding» Reduce slips and trips due to wet floors» Reduces aircraft cleaning costs» Easy to clean and maintain» Easy to replace during maintenance» Made in Europe	<p>Materials</p> <ul style="list-style-type: none">» 80% hard-twist cut pile» 20% wool/nylon blend» Coarse nylon scraper» Fire retardant PVC backing <p>Applications</p> <ul style="list-style-type: none">» Aircraft entrances» Galley» Aisles <p>Certifications</p> <ul style="list-style-type: none">» Ref. No. AI/8847/83» FAR/JAR Part 25 App. F Part 1 Vertical Test	<p>Height</p> <ul style="list-style-type: none">» Approx. 10 mm <p>Weight</p> <ul style="list-style-type: none">» 3.5 kg/m² +/- 7.5% <p>Standard Sizes</p> <ul style="list-style-type: none">» 76 x 76 cm +/- 5%» 76 x 122 cm +/- 5%» 76 x 154 cm +/- 5%



Or turn to Page 86



A lush, PET fibre pile made from 100% recycled materials
Designed to absorb and trap dirt, mud, debris and many other contamination types, with an impervious rubber backing to prevent moisture from passing through to the boot lining, the Car Protector Set is a welcome addition to a busy car.

Why Choose Car-Protector Premium?	Technical Details	Specification
<ul style="list-style-type: none">» Keeps boot lining clean and dry» Protects bumper from scuffs and scrapes» Superior dirt and moisture absorbency» Detachable bumper panel» Made with 100% recycled PET fibre pile» Machine washable up to 30°C» Fast drying surface» 5 years Manufacturers Guarantee	<p>Materials</p> <ul style="list-style-type: none">» 100 % recycled PET material» 100 % nitrile rubber (15% recycled rubber content) <p>Applications</p> <ul style="list-style-type: none">» Car boots <p>Certifications</p> <ul style="list-style-type: none">» EN 13501-1 Certified» NFSI High-Traction	<p>Sizes</p> <div></div> <p>Height</p> <ul style="list-style-type: none">» Approx. 10-11 mm



Or turn to Page 86

Kleen-Cable Mat EV



KLEEN-TEX COMMERCIAL PRODUCT GUIDE 2024 | TRANSPORTATION



Protection for you, your family and your vehicle
Unsecured cables can lead to accident or injury or lead to damage of the charging unit or even your vehicle. Kleen-Cable Mat EV is designed to contain loose Electric Vehicle cables flat to the ground and reduce the likelihood of a trip accident.

Why Choose Kleen-Cable Mat EV?	Technical Details	Specification
<ul style="list-style-type: none">» Electric vehicle charging cable safety» Protects pedestrians from potential trip hazards» Integrated channel to hold cables in place» High visibility warning borders» Suitable for all weather conditions» Slip-resistant rubber» Made with recycled rubber content» 2 years Manufacturers Guarantee» Made in Europe	<p>Materials</p> <ul style="list-style-type: none">» 100% nitrile rubber (15% recycled rubber content) <p>Applications</p> <ul style="list-style-type: none">» EV charging points» Garages» Driveways» Forecourts <p>Certifications</p> <ul style="list-style-type: none">» EN 14041 Antistatic	<p>Height</p> <ul style="list-style-type: none">» Approx. 5 mm <p>Weight</p> <ul style="list-style-type: none">» Approx. 5.8kg/m² <p>Standard Sizes</p> <ul style="list-style-type: none">» 40 x 120 cm» 40 x 160 cm and 40 x 200 cm available to order <p>Reverse</p>



Full Technical Data



Or turn to Page 86

Parking Mat



Designate areas of your car parks to specific purposes
No more messy and permanent paint markings to designate collection bays or other areas. Our Parking Mat provides a sleek, temporary and flexible solution. Upgrade your parking game.

Why Choose Parking Mat?	Technical Details	Specification
<ul style="list-style-type: none">» Non-permanent solution to parking allocation» Fully customisable with your own branding» Suitable for all weather conditions» Durable nylon grass effect surface» Pantone, HKS and RAL matching available*» Light-fast and colour fade resistant» 2 years Manufacturers Guarantee» Made in Europe	<p>Materials</p> <ul style="list-style-type: none">» 100% monofilament PA 6 surface» 100% nitrile rubber backing <p>Applications</p> <ul style="list-style-type: none">» Car parks <p>Certifications</p> <ul style="list-style-type: none">» EN 13501-1 / BFL-s1 <p>Colour</p> <ul style="list-style-type: none">» See page 39 for Jet-Print palette details	<p>Height</p> <ul style="list-style-type: none">» Approx. 8 mm <p>Weight</p> <ul style="list-style-type: none">» 3.6 kg/m² <p>Standard Sizes</p> <ul style="list-style-type: none">» 150 x 300 cm» 115 x 250 cm» Custom sizes also available



Full Technical Data



Or turn to Page 86

	Specification							Certification			Surface (and Foam Insert if applicable)			
	Outdoor Use	Eco Properties	Application Area	Max Width	Max Length	Mat Height	Mat Weight	Burning Behaviour	Static Electrical Propensity	Slip Resistance	Material	Colouration	Pile (or Foam) Height	Pile (or Foam) Weight
Product Name														
Ad-Mat Premium	-			150 cm	200 cm	1.25/1.7 mm	1.25/1.78 kg/m²	-	-	-	100% knitted polyester	Sublimation	0.35 mm	210 g/m²
Airline-Mat***	-			76 cm	154 cm	~10 mm	~3.5 kg/m²	EASA CS.25.853	-	-	Wool and nylon blend with polyester back	-	~8 mm	1.55 kg/m²
Bar-Mat Premium	-			150 cm	200 cm	1.25/1.7 mm	1.25/1.78 kg/m²	-	-	-	100% knitted polyester	Sublimation	0.35 mm	210 g/m²
Car Protector Premium Mat	-			90cm	110 cm	~11 mm	2.7 kg/m²	-	-	-	Recycled PET material	Solution dyed	9-10 mm	950 g/m²
Car Protector Premium Flap	-			70cm	100 cm	1.7 mm	2.48 kg/m²	-	-	-	100% Nitrile rubber (15% recycled)	N/A	-	-
Counter Mat	-			150 cm	200 cm	1.25/1.7 mm	1.25/1.78 kg/m²	-	-	-	100% knitted polyester	Sublimation	0.35 mm	210 g/m²
Desk Planner Mat	-			150 cm	200 cm	1.25/1.7 mm	1.25/1.78 kg/m²	-	-	-	100% knitted polyester	Sublimation	0.35 mm	210 g/m²
EcoAbsorb	-			200 cm	700 cm	~15 mm	2.85 kg/m²	EN13501-1/CFL-s1	EN14041 Antistatic	-	Micro nylon & high-twist nylon polyamide 6 50% recycled yarn	Solution dyed	~14 mm	1100 g/m²
Entrance	-			115 cm	175 cm	~11-12 mm	2.2 kg/m²	EN13501-1/CFL-s1	-		100% high-twist nylon polyamide 6	Solution dyed	~10-11 mm	700 g/m²
Green-Horse	-			150 cm	700 cm	~10-11 mm	2.65 kg/m²	EN13501-1/CFL-s1	EN14041 Antistatic		Recycled 100% PET material	Solution dyed	~9-10 mm	950 g/m²
Iron-Horse	-			200 cm**	700 cm	~11-12 mm	2.4 kg/m²	EN13501-1/CFL-s1	EN14041 Antistatic		100% high-twist nylon polyamide 6	Solution dyed	~10-11 mm	700 g/m²
Iron-Horse Light	-			115 cm	175 cm	~11-12 mm	1.8 kg/m²	-	-	-	100% high-twist nylon polyamide 6	Solution dyed	~10-11mm	700 g/m²
Iron-Horse XL	-			150 cm	700 cm	~13-14 mm	2.54 kg/m²	EN13501-1/CFL-s1	EN14041 Antistatic		100% high-twist nylon polyamide 6	Solution dyed	~12-13 mm	840 g/m²
Jet-Print	-			200 cm	700 cm	~9 mm	2.48 kg/m²	EN13501-1/CFL-s1	EN14041 Antistatic		100% high-twist nylon polyamide 6.6	Chromojet printing	~8 mm	780 g/m²
Jet-Print Big Size	Yes			400 cm	4000 cm	~6 mm	1.65/2.67 kg/m²	EN13501-1/CFL-s1	-	-	100% polyamide 6	Chromojet printing	~4 mm	500 g/m²
Jet-Print Event	-			200 cm	2000 cm	~5 mm	1.1 kg/m²	-	-	-	100% polyamide 6	Chromojet printing	~4 mm	325 g/m²
Jet-Print Hi-Vis	-			200 cm	700 cm	~9 mm	2.48 kg/m²	EN13501-1/CFL-s1	EN14041 Antistatic		100% high-twist nylon polyamide 6.6	Chromojet printing	~8 mm	780 g/m²
Jet-Print Horizon	-			200 cm	2000 cm	~10 mm	3.8 kg/m²	EN13501-1/BFL-s1	-	-	100% high-twist nylon polyamide 6.6	Chromojet printing	~8 mm	1080 g/m²
Jet-Print Light	-			200 cm	700 cm	~7 mm	1.9 kg/m²	EN13501-1/CFL-s1	-	-	100% High-twist nylon polyamide 6.6	Chromojet printing	~6 mm	680 g/m²
Jet-Print Outdoor	Yes			200 cm	700 cm	~8 mm	3.6 kg/m²	EN13501-1/BFL-s1	-	-	100% monofilament PA 6	Chromojet printing	~6 mm	~1420 g/m²
Jet-Print Patio	-			200 cm	2000 cm	~5 mm	2.4 kg/m²	EN13501-1/CFL-s1	-	-	100% polyamide 6	Chromojet printing	~3 mm	300 g/m²
Jet-Print Plus	-			200 cm	700 cm	~10 mm	2.75 kg/m²	EN13501-1/CFL-s1	EN14041 Antistatic		100% high-twist nylon polyamide 6.6	Chromojet printing	~9 mm	1050 g/m²
Jet-Print Velour	-			200 cm	700 cm	~6 mm	1.7 kg/m²	-	-	-	100% polyamide 6	Chromojet printing	~5mm	525 g/m²
Jet-Print Vision	-			200 cm	700 cm	~7 mm	2.5 kg/m²	EN13501-1/CFL-s1	-	-	100% high-twist nylon polyamide 6.6	Chromojet printing	~6 mm	800 g/m²
Keyboard Runner	-			150 cm	200 cm	1.25/1.7 mm	1.25/1.78 kg/m²	-	-	-	100% knitted polyester	Sublimation	0.35 mm	210 g/m²
Kleen-Cable Mat	-			40cm	120cm	~13 mm	3.95 kg/m²	EN13501-1/DFL-s1	EN14041 Antistatic	-	100% high-twist nylon polyamide 6.6	Solution dyed	~10 mm	700 g/m²
Kleen-Cable Mat EV	Yes			40cm	200cm	~4.8 mm	~5.8 kg/m²	-	EN14041 Antistatic	-	100% nitrile rubber (15% recycled)	N/A	-	-
Kleen-Cable Mat Rubber	Yes			40cm	200cm	~4.8 mm	~5.8 kg/m²	-	EN14041 Antistatic	-	100% nitrile rubber (15% recycled)	N/A	-	-
Kleen-Coil	Yes			115 cm	300 cm	~7.5 mm	~4.5 kg/m²	EN13501-1/DFL-s1	EN14041 Antistatic		100% nitrile rubber	N/A	-	-
Kleen-Comfort Design	-			85cm	285 cm	~20 mm	~5.77 kg/m²	DOC-FF-1-70	-		High-twist nylon polyamide 6.6 (100% nitrile foam)	Chromojet printing	~7 mm (11.5 mm)	680 g/m² (~3 kg/m²)
Kleen-Comfort Office	-			85 cm	285 cm	~18 mm	~5.89 kg/m²	DOC-FF-1-70	-		50% polyester 50% polypropylene (100% nitrile foam)	Solution dyed	~4 mm (11.5 mm)	750 g/m² (~3 kg/m²)
Kleen-Comfort Safety	-			85 cm	285 cm	~15 mm	7.18 kg/m²	EN13501-1/EFL-s1	EN14041 Antistatic		100% nitrile rubber (100% nitrile foam)	N/A	~(-11.5mm)	(3 kg/m²)
Kleen-Comfort Soft	-			85 cm	285 cm	~21 mm	~5.79 kg/m²	EN13501-1/CFL-s1	-		100% high-twist nylon polyamide 6.6 (100% nitrile foam)	Solution dyed	~10-11 mm (11.5 mm)	700 g/m² (~3 kg/m²)
Kleen-Comfort	-			85 cm	285 cm	~15 mm	7.18 kg/m²	EN13501-1/EFL-s1	EN14041 Antistatic		100% nitrile rubber (100% nitrile foam)	N/A	~(-11.5 mm)	(3 kg/m²)
Kleen-Cooler Mat	-			60 cm	85 cm	~11-12 mm	2.4 kg/m²	EN13501-1/CFL-s1	-	-	100% high-twist nylon polyamide 6	Solution dyed	~10-11 mm	700 g/m²
Kleen-Cushion	Yes			115 cm	175 cm	~8 mm	4.2 kg/m²	-	EN14041 Antistatic	-	100% nitrile rubber	N/A	-	-
Kleen-Foam	-			70 cm	135 cm	~11.5 mm	3 kg/m²	-	-	-	100% nitrile foam	N/A	~(-11.5 mm)	(~3 kg/m²)
Kleen-Scrape	Yes			115 cm	300 cm	~5.5 mm	4.2 kg/m²	EN13501-1/EFL-s1	EN14041 Antistatic		100% nitrile rubber (15% recycled)	N/a	-	-
Kleen-Sticky Mat	-			115 cm	90 cm	30 Sheets - 1.14mm 60 Sheets - 2.13mm	-	Anti-Microbial Testing: 2-n-octyl-4-isothiazolin-3-one (OIT)			100% polyethylene layers	N/A	-	-
Kleen-Thru Plus ****	Yes			86 cm	143 cm	~8 mm	4.33 kg/m²	EN13501-1/EFL-s1	-	-	100% nitrile rubber	N/A	-	-
Kleen-Tile	Yes			30.4 cm/ Modular	30.4 cm/ Modular	~10 mm	4.2 kg/m²	EN13501-1/BFL-s1 ENISO 11925-2/9239-1	-	See Appendix 1	UV treated vinyl	N/A	~10 mm	-
Kleen-Wave	-			58 cm/ Modular	100 cm/ Modular	9 mm	2.2 kg/m²	See Appendix 2			100% recycled PET plastic	N/A	9 mm	-
Kleen-Wheel Forklift Mat	-			200 cm	700 cm	~16 mm	5.02 kg/m²	-	EN14041 Antistatic	-	Micro nylon & high-twist nylon polyamide 6	Solution dyed	~14 mm	1100 g/m²
Montone	-			150 cm	700 cm	~11-12 mm	2.4 kg/m²	EN13501-1/CFL-s1	-		100% high-twist nylon polyamide 6.6	Solution dyed	~10-11 mm	700 g/m²
PolyCotton	-			150 cm	700 cm	~13 mm	2.80 kg/m²	EN13501-1/EFL-s1	-	-	50% cotton 50% polyester	Reactive dyed	~12 mm	970 g/m²
Super-Mat 2	-			150 cm	700 cm	~10 mm	3.1 kg/m²	EN13501-1/CFL-s1	EN14041 Antistatic		100 % Econyl® regenerated nylon	Solution dyed	~9 mm	900 g/m²
Water-Horse	Yes			115 cm	240 cm	~7 mm	3.2 kg/m²	EN13501-1/EFL-s1	-		50% polyester 50% polypropylene (50% recycled content)	Solution dyed	~4 mm	750 g/m²

			Specification			Materials		Certification							
	Outdoor Use	Eco Properties	Max Custom Width	Max Custom Length	Insert Depth	Insert Construction	Grid Construction	Fire Rating	Fire Rating (Additional)	Light Fastness	Rubbing Fastness	Water Fastness	ISO9001: 2018	B58300 DDA Compliant	B54790: 1987
Product Name															
Kleen-Fit Guard DC001	-		4000 mm*	No Limit	12/17 mm	Heavy duty fibre bonded polypropylene	Aluminium <95% Recycled	BS4790: Low	-	6 (ISO105-802)	5 (ISO105-E01)	4 (ISO105-X12)	Yes	Yes	Yes
Kleen-Fit Guard DC003	-		4000 mm*	No Limit	12/17 mm	85% polypropylene 15% recycled polyester	Aluminium <95% Recycled	BS4790: Low	-	>6 (ISO105-802)	5 (ISO105-X12)	5 (ISO105-B01)	Yes	Yes	Yes
Kleen-Fit Guard DC004	-		4000 mm*	No Limit	12/17 mm	Natural brush coir	Aluminium <80% Recycled	BS4790: Low	-	-	-	-	Yes	Yes	-
Kleen-Fit Guard DC005	Yes		4000 mm*	No Limit	12/17 mm	Natural and styrene butadiene rubber	Aluminium <95% Recycled	BS4790: Low	DIN4106 - B2	-	-	-	Yes	Yes	Yes
Kleen-Fit Guard DC008	Yes		4000 mm*	No Limit	12/17 mm	Recycled flecked rubber	Aluminium <95% Recycled	BS4790: Low	DIN4106 - B2	-	-	-	Yes	Yes	Yes
Kleen-Fit Guard DC022	-		4000 mm*	No Limit	12/17 mm	Heavy ribbed polypropylene	Aluminium <95% Recycled	BS4790: Low	EN 95/28 (ECE118)	6 (ISO105-802)	5 (ISO105-E01)	4 (ISO105-X12)	Yes	Yes	Yes
Kleen-Fit Guard Eco	-		4000 mm*	No Limit	12/17 mm	Natural goat hair	Aluminium <100% Recycled	BS4790: Low	ISO9239-1: CFL-s1	5-6 (BS1006-1990)	4 (BS1006-1990)	4 (BS1006-1990)	Yes	Yes	Yes
Kleen-Fit System Brush	-		No Limit	No Limit	12/17/22mm	Looped polypropylene	Aluminium with stainless steel wire	CFL-s1	-	-	-	-	-	-	-
Kleen-Fit System Ribbed	Yes		No Limit	No Limit	12/17/22mm	Hard rubber	Aluminium with stainless steel wire	CFL-s1	-	-	-	-	-	-	-
Kleen-Fit System Scrub	Yes		No Limit	No Limit	12/17/22mm	Rigid polyamid (6.6) tufts	Aluminium with stainless steel wire	CFL-s1	-	-	-	-	-	-	-

Key

- Standard Entrance Mats
- Custom Printed Mats
- Fitted Entrance Systems
- Anti-Fatigue Mats
- Workplace Safety Mats
- Wet Area Mats
- Transportation Mats

Appendix

- * 5 Year Manufacturers Guarantee or 2 years under industrial laundry conditions
- ** Widths up to 200cm available in Granite and Midnight Grey. Maximum width of 150cm available in Black Pearl, Black Steel and Black Cedar.

- 1Kleen-Tile:** Slip Resistance conforms to DIN 51067: A + B + C and DIN EN 13451/15288-1:26°
- 2Kleen-Wave:** Temperature Resistance: ~35°C to +70°C (~31°F - +158°F). Slip Resistance: DIN 51097: A+B+C | DIN EN 13451/15288-1:30°. Emissions: ISO 16000-9: TVOC Class A+

***Airline Mat has been issued with CAA certificate: Ref No. AI/8847/83

**** NAMSA (North American Science Associates) has indicated that Kleen-Thru Plus is rated 0/NZ (no growth, no zone) in the AATCC/CTM 30, Part 111 test, meaning this mat has an effective fungic static treatment that helps control the bacterial and fungal growth that cause odour in the mat. The anti-microbial treatment is registered in the USA by the Environmental Protection Agency and is bound and non-migrating, which means it is present for the life of the mat and will not wash off or rub off even when subjected to prolonged industrial washing. This treatment only protects the Kleen-Thru Plus mat and not the people who are using it.

		Backing							Cleaning			Details						
Dirt Absorption	Moisture Absorption	Material	Grip Type	Height	Weight	Borders			Machine Washable	Drying	Manual Cleaning	Custom Designs	Custom Shapes	Special Colours Available	Colourfast and Lightfast	Suitable for Underfloor Heating	Guarantee	Customs Tariff Number
						Availability	Width	Height										
-	-	100% nitrile rubber	Flat	0.9/1.35mm	1.04/1.57 kg/m²	Optional	10/20mm	0.9/1.35 mm	Up to 40°C	Lay flat	Vacuum	Yes	Yes	CMYK	-	Yes	1 Year	54076990
-	-	Flame retardant PVC	Embossed	2.5 mm	2 kg/m²	Standard	30 mm	2.5 mm	-	Lay flat	Vacuum/ Steam	-	-	-	-	-	-	57032999
-	-	100% nitrile rubber	Flat	0.9/1.35mm	1.04/1.57 kg/m²	Standard	10/20 mm	0.9/1.35 mm	Up to 40°C	Lay flat	Vacuum	Yes	Yes	CMYK	-	Yes	1 Year	54076990
800 g/m²	3-4 l/m²	100% nitrile rubber 15% recycled	Flat	1.2 mm	1.75 kg/m²	No	-	-	Up to 30°C	Lay flat	Vacuum	-	-	-	Yes	-	5 Years	57033088
-	-	100% nitrile rubber	Flat	1.7 mm	2.48 kg/m²	No	-	-	-	Lay flat	Wipe Clean	-	-	-	-	-	5 Years	40169100
-	-	100% nitrile rubber	Flat	0.9/1.35mm	1.04/1.57 kg/m²	Standard	10/20mm	0.9/1.35 mm	Up to 40°C	Lay flat	Vacuum	Yes	Yes	CMYK	-	Yes	1 Year	54076990
-	-	100% nitrile rubber	Flat	0.9/1.35mm	1.04/1.57 kg/m²	Standard	10/20mm	0.9/1.35 mm	Up to 40°C	Lay flat	Vacuum	Yes	Yes	CMYK	-	Yes	1 Year	54076990
1100 g/m²	5-6 l/m²	100% nitrile rubber	Kleeted/Flat	1.5 mm	1.75 kg/m²	Optional	20 mm	2.5 mm	Up to 60°C	Up to 60°C	Vacuum/ Steam Clean	-	-	-	Yes	Yes	5 Years*	57032999
800 g/m²	3-4 l/m²	100% nitrile rubber 15% recycled	Kleeted	1.2 mm	1.5 kg/m²	Standard	20 mm	2.2 mm	-	Lay flat	Vacuum/ Steam Clean	-	-	-	Yes	Yes	2 Years	57032999
800 g/m²	3-4 l/m²	100% nitrile rubber	Kleeted/Flat	1.4 mm	1.7 kg/m²	Optional	20 mm	2.4 mm	Up to 60°C	Up to 60°C	Vacuum	-	-	-	Yes	Yes	5 Years*	57032999
800 g/m²	3-4 l/m²	100% nitrile rubber	Kleeted/Flat	1.4 mm	1.7 kg/m²	Optional	20 mm	2.4 mm	Up to 60°C	Up to 60°C	Vacuum	-	-	-	Yes	Yes	5 Years*	57032999
800 g/m²	3-4 l/m²	100% nitrile rubber	Kleeted/Flat	0.9 mm	1.1 kg/m²	Standard	10 mm	0.9 mm	Up to 40°C	Up to 40°C	Vacuum/ Steam	-	-	-	Yes	Yes	2 Years	57032999
1000 g/m²	4-5 l/m²	100% nitrile rubber	Kleeted/Flat	1.4 mm	1.7 kg/m²	Optional	20 mm	2.4 mm	Up to 60°C	Up to 60°C	Vacuum	-	-	-	Yes	Yes	5 Years*	57032999
600 g/m²	3-4 l/m²	100% nitrile rubber	Kleeted/Flat	1.4 mm	1.7kg/m²	Optional	20 mm	2.4 mm	Up to 60°C	Up to 60°C	Vacuum	Yes	Yes	Pantone, HKS, RAL	Yes	Yes	5 Years*	57032999
-	-	Textile or easy lift	Flat	~2mm	-	No	-	-	-	Lay flat	Vacuum/ Carpet Clean	Yes	-	Pantone or RAL	-	-	-	57032919
-	-	Latex WV backing	Flat Waffle	~1mm	-	No	-	-	-	Lay flat	Vacuum/ Carpet Clean	Yes	-	RGB 1998	-	-	-	57032919
600 g/m²	3-4 l/m²	100% nitrile rubber	Kleeted/Flat	1.4 mm	1.7 kg/m²	Optional	20 mm	2.4 mm	Up to 60°C	Up to 60°C	Vacuum	Yes	-	Pantone, HKS, RAL	Yes	Yes	5 Years*	57032999
700 g/m²	4-5 l/m²	100% vinyl	Flat	2 mm	2.72 kg/m²	Standard	25 mm	2 mm	-	Lay flat	Vacuum/ Steam Clean	Yes	-	Pantone, HKS, RAL	Yes	Yes	2 Years	57032999
470 g/m²	2-3 l/m²	100% nitrile rubber	Kleeted/Flat	0.9 mm	1.2 kg/m²	Optional	10 mm	1.9 mm	Up to 60°C	Up to 60°C	Vacuum	Yes	Yes	Pantone, HKS, RAL	Yes	Yes	2 Years	57032999
-	-	100% nitrile rubber	Kleeted/Flat	1.8 mm	2.2 kg/m²	Optional	20 mm	1.8 mm	-	Lay flat	Vacuum	Yes	Yes	Pantone, HKS, RAL	Yes	Yes	2 Years	57032999
-	-	Vinyl backing	Flat	~2mm	~2.05 kg/m²	Standard	25 mm	-	Limited washability up to 30°C	Lay flat	Vacuum/ Hand Wash	Yes	Yes	Pantone, RGB, CMYK	-	-	-	57032919
800 g/m²	4-5 l/m²	100% nitrile rubber	Kleeted/Flat	1.4 mm	1.7 kg/m²	Optional	20 mm	2.4 mm	Up to 60°C	Up to 60°C	Vacuum	Yes	Yes	Pantone, HKS, RAL	Yes	Yes	5 Years*	57032999
-	-	100% nitrile rubber	Flat	0.9 mm	1.2 kg/m²	Standard	20 mm	1.9 mm	Up to 40°C	Lay flat	Vacuum	Yes	Yes	Pantone, HKS, RAL, RGB	Yes	Yes	2 Years	57032999
400 g/m²	3-4 l/m²	100% nitrile rubber	Kleeted/Flat	1.4 mm	1.7 kg/m²	Optional	20 mm	2.4 mm	Up to 60°C	Up to 60°C	Vacuum	Yes	Yes	Pantone, HKS, RAL, RGB	Yes	Yes	5 Years*	57032999
-	-	100% nitrile rubber	Flat	0.9/1.35mm	1.04/1.57 kg/m²	Standard	10/20mm	0.9/1.35 mm	Up to 40°C	Lay flat	Vacuum	Yes	Yes	CMYK	-	Yes	1 Year	54076990
800 g/m²	3-4 l/m²	100% nitrile rubber	Kleeted	2.8mm	3.24 kg/m²	Standard	30 mm	2.8 mm	-	Lay flat	Vacuum/ Steam/Clean	-	-	-	Yes	Yes	2 Years	57032999
-	-	100% nitrile rubber (15% recycled)	Kleeted	4.8 mm	5.8 kg/m²	Standard	30 mm	4.8 mm	-	Lay flat	Brush/ Pressure	-	-	-	Yes	Yes	2 Years	40169100
-	-	100% nitrile rubber (15% recycled)	Kleeted	4.8 mm	5.8 kg/m²	Standard	30 mm	4.8 mm	-	Lay flat	Brush/ Pressure	-	-	-	Yes	Yes	2 Years	40169100
-	-	100% nitrile rubber	Flat	~3.6 mm	~4.5 kg/m²	Standard	20 mm	4.5 mm	Up to 60°C	Up to 60°C	Vacuum/ Steam Clean	-	-	-	Yes	Yes	5 Years	40169100
-	-	100% nitrile rubber	Flat	1.8 mm	2.09 kg/m²	No	-	-	Up to 60°C	Lay flat	Vacuum/ Steam Clean	Yes	-	Pantone, HKS, RAL	Yes	Yes	5 Years*	57032999
-	-	100% nitrile rubber (15% recycled)	Flat	1.8 mm	2.09 kg/m²	No	-	-	-	Lay flat	Vacuum/ Steam Clean	-	-	-	Yes	Yes	5 Years	56031490
-	-	100% nitrile rubber (15% recycled)	Flat	3.6 mm	4.18 kg/m²	No	-	-	Up to 60°C	Lay flat	Vacuum/ Pressure Wash	-	-	-	Yes	Yes	5 Years	40169100
-	-	100% nitrile rubber	Flat	1.8 mm	2.09 kg/m²	No	-	-	Up to 60°C	Lay flat	Vacuum/ Steam Clean	-	-	-	Yes	Yes	5 Years*	57032999
-	-	100% nitrile rubber 15% recycled	Flat	3.6 mm	4.18 kg/m²	No	-	-	Up to 60°C	Lay flat	Vacuum/ Pressure Wash	-	-	-	Yes	Yes	5 Years	40169100
800 g/m²	3-4 l/m²	100% nitrile rubber (15% recycled)	Kleeted	1.4 mm	1.7 kg/m²	Standard	20 mm	2.4 mm	-	Lay flat	Vacuum/ Steam Clean	-	-	-	Yes	Yes	2 Years	57032999
-	-	100% nitrile rubber	Flat	3.6 mm	~4.2 kg/m²	Standard	20 mm	2.5 mm	-	Lay flat	Steam Clean/ Pressure	-	-	-	Yes	Yes	2 Years	40169100
-	-	100% nitrile foam	Flat	-	-	No	-	-	-	Lay flat	Vacuum/ Steam Clean	-	-	-	Yes	Yes	2 Years	40169100
-	-	100% nitrile rubber (15% recycled)	Flat	3.6 mm	4.2 kg/m²	Standard	20 mm	3.6 mm	Up to 60°C	Up to 60°C	Brush	-	-	-	Yes	Yes	5 Years*	40169100
-	-	-	Flat	-	-	-	-	-	-	-	-	-	-	-	-	-	-	39199080
-	-	100% nitrile rubber	Textured	~8 mm	4.33 kg/m²	Standard	30 mm	3 mm	Up to 60°C	Lay flat	Steam Clean	-	-	-	Yes	Yes	5 Years*	40169100
-	-	N/A	-	-	-	No	-	-	-	-	Steam Clean/ Pressure	-	-	-	Yes	Yes	3 Years	39204390
-	-	N/A	-	-	-	No	-	-	-	-	Steam Clean/ Pressure	-	-	-	Yes	Yes	2 Years	39189000
1100 g/m²	5-6 l/m²	100% nitrile rubber (15% recycled)	Flat	2.8 mm	3.92 kg/m²	Optional	20 mm	2.8 mm	-	Lay flat	Vacuum/ Carpet Clean	-	-	-	Yes	Yes	2 Years	57032999
800 g/m²	3-4 l/m²	100% nitrile rubber (15% recycled)	Kleeted/Flat	1.4 mm	1.7 kg/m²	Optional	20 mm	2.4 mm	Up to 60°C	Up to 60°C	Vacuum	-	-	-	Yes	Yes	5 Years*	57032999
800 g/m²	3-4 l/m²	100% nitrile rubber	Kleeted/Flat	1.6 mm	1.83 kg/m²	Optional	20 mm	2.6 mm	Up to 60°C	Up to 75°C	Vacuum	-	-	-	Yes	Yes	5 Years*	57039080
950 g/m²	3-4 l/m²	100% nitrile rubber	Kleeted/Flat	1.8 mm	2.2 kg/m²	Optional	20 mm	2.8 mm	Up to 60°C	Up to 60°C	Vacuum	-	-	-	Yes	Yes	5 Years*	57032999
1000 g/m²	4-5 l/m²	100% nitrile rubber (15% recycled)	Flat	1.8 mm	2.3 kg/m²	Standard	20 mm	3.6 mm	-	Lay flat	Vacuum/ Steam Clean	-	-	-	Yes	Yes	5 Years	56031490

As a leading global manufacturer of floor matting systems, we understand our responsibility to continuously improve the sustainability of our products and operations.

Procuring Recycled Materials

Whilst procuring recycled materials for our products is essential, we are also developing end of life options for our products across all Kleen-Tex home and commercial brands.

For example, our solid rubber mats can be recrumbed for use in new products to reduce the consumption and processing of new raw materials.

We are also continuously exploring how we can extend our dedicated range of floor matting systems that are manufactured from recycled materials, including 100% **ECONYL®** regenerated nylon made from post manufacture and post consumer waste.

Our EcoAbsorb product is manufactured from **Renycle™ 50** recycled yarn, which, compared to standard yarn, saves energy, reduces CO₂ emissions, reduces water consumption and reduces waste material during production.

Our EcoAbsorb floor matting system also dries 37% faster than a cotton mat, saving valuable energy, time and money during laundry cycles.

In some products we utilise fabric constructed from 100% recycled PET plastic bottles and nitrile rubber with 15% recycled content.



Reducing Our Carbon Footprint

We are also undertaking a series of initiatives as part of our commitment to minimising our carbon footprint.

From a logistics perspective, we are proactively consolidating our deliveries with the aim of sending full truckloads to eliminate any empty shipping space. We have also implemented reduced travel frequency for staff, with increased use of conference call technology and working from home with virtual offices.

Wherever possible, we're reducing waste across global operations, recycling at every opportunity and sourcing from suppliers within the same region.



Adopting efficient processes

ISO 14001:2015 is implemented throughout all aspects of our operations and we are continuously identifying how we can increase our operational efficiencies across all aspects of our business.

This includes a reduction in packaging and pallet use, the introduction of recyclable packaging and increasing our use of renewable energy throughout our supply chain.

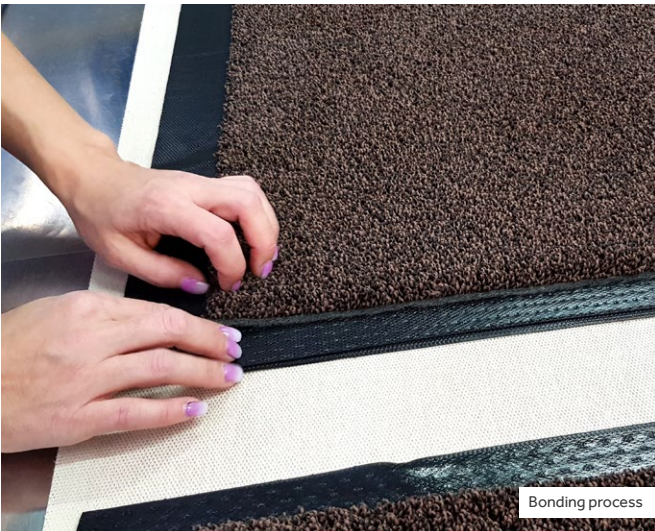
We aim to recycle 100% of post manufactured waste by 2025 globally and are currently achieving 88% of our target.



Quality, service and flexibility are our watchwords and we take enormous pride in our ability to deliver even the most complex bespoke order quickly, efficiently and on time.

Our entire production process, from tufting to bonding, takes place at our manufacturing location in Poland, which means that we have full control over production schedules and can offer fast and accurate delivery timescales to suit all requests.

We have direct links between all our customer sales teams and our production site, allowing for excellent communication and accurate delivery timescales.



Product Samples

Whilst every effort has been made to ensure the colours illustrated in this brochure are as accurate as possible, there may be some natural colour distortion during the printing process. We strongly recommend that before ordering you ask to see our colour samples which will allow you to choose from the original colours and see the structure of our pile.

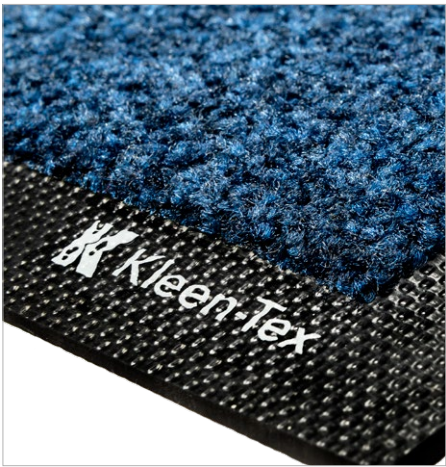


Labels and Embossing

Kleen-TEX offer a labelling and embossing service for all rubber-backed mats, enabling you to personalise your mats with your company details and messages.

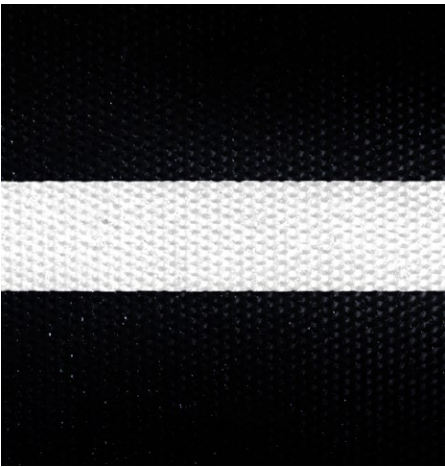
Production of your individual labels or embossing plates takes up to three weeks from design approval.

Minimum order quantity for mats with labels is 250.



Border Labels

For your website or logo on the front side of the mat.



White Back Labels

White stripe on the back of the mat. You can mark them with a water-proof felt pen, to mark inventory numbers or internal information etc.



Back Labels

For your company logo, washing instructions, mat descriptions etc. on the back of the mat.

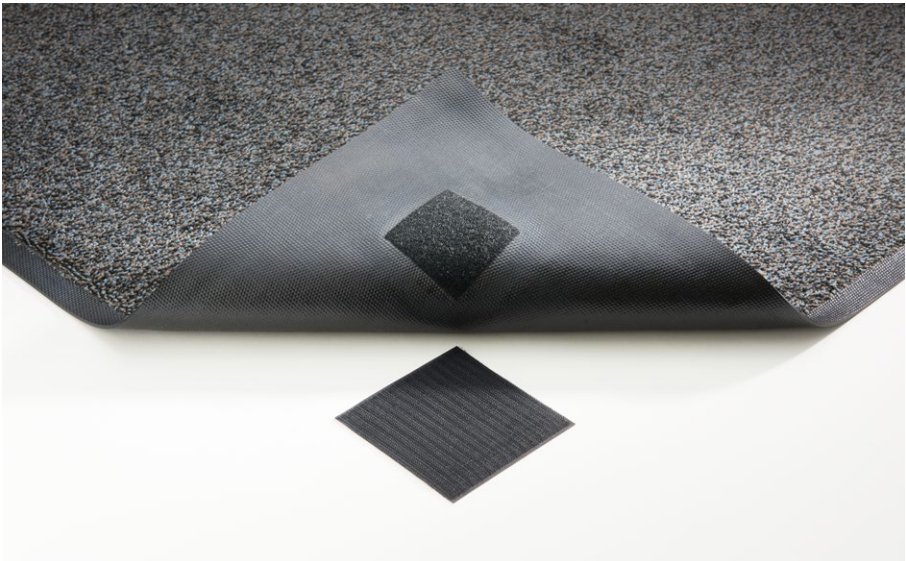


Embossing

Embossing the back, for example for your company logo etc.

Velcro

Primary use of velcro is to fix the mats in one place. The hook part should be stuck to the floor where the mat will be placed and the second loop part is integrated on to the mat backing. When you lay out the mat and join the two parts together, the mat will be fixed to the floor. This is a possible solution for mats being used in places where many people and shopping carts pass over the mat. Available in 10 x 10cm squares.



Data Chips

For the storage of specific information about a mat there is also the possibility to integrate data chips.

These will be provided by you and we will incorporate them into the mat during the manufacturing process. To show the position of the data chips externally, we can place an additional label on the mat backing above the chip position.

Data chips are extremely efficient and also especially long lasting. Our sales team will gladly offer further advice.





Kleen-Tex Industries Limited

Unit 717 Eddington Way, Birchwood Park
Warrington WA3 6BA, United Kingdom

www.kleen-tex.co.uk

+44 (0)1204 70 50 70

info@kleen-tex.co.uk



Kleen-Tex Industries GmbH

Kaiser Nordwand - Fühölzl 2
A-6341 Ebbs / Kufstein, Austria

www.kleen-tex.eu

+43 / 53 72 / 61 3 80

info@kleen-tex.eu



Kleen-Tex Polska Sp. z o.o.

ul. Fabryczna 5/12
26-130 Suchedniów, Poland

www.kleen-tex.pl

+48 41 267 25 00

info@kleen-tex.pl



Subscribe to our newsletter here:

Stay up to date with
future inspiration,
news and promotions
from Kleen-Tex

